



# Dsg1 Polyclonal Antibody

Catalog No	BYab-17114
Isotype	IgG
Reactivity	Human;Mouse;Rat
Applications	WB;IHC;IF;ELISA
Gene Name	DSG1 CDHF4
Protein Name	Desmoglein-1 (Cadherin family member 4) (Desmosomal glycoprotein 1) (DG1) (DGI) (Pemphigus foliaceus antigen)
Immunogen	Synthetic peptide from human protein at AA range: 30-90
Specificity	The antibody detects endogenous Dsg1
Formulation	Liquid in PBS containing 50% glycerol, 0.5% BSA and 0.02% sodium azide.
Source	Polyclonal, Rabbit,IgG
Purification	The antibody was affinity-purified from rabbit antiserum by affinity-chromatography using epitope-specific immunogen.
Dilution	WB 1:500-2000,IHC-p 1:500-200, ELISA 1:10000-20000. IF 1:50-200
Concentration	1 mg/ml
Purity	≥90%
Storage Stability	-20°C/1 year
Synonyms	Desmoglein-1 (Cadherin family member 4;Desmosomal glycoprotein 1;DG1;DGI;Pemphigus foliaceus antigen)
Observed Band	160kD
Cell Pathway	Cell membrane ; Single-pass type I membrane protein . Cell junction, desmosome.
Tissue Specificity	Epidermis, tongue, tonsil and esophagus.
Function	disease:Defects in DSG1 are the cause of palmoplantar keratoderma striate type 1 (SPPK1) [MIM:148700]; also known as keratosis palmoplantaris striata I. SPPK1 is a dermatological disorder characterized by thickening of the skin on the palms and soles, and longitudinal hyperkeratotic lesions on the palms, running the length of each finger.,domain:Calcium may be bound by the cadherin-like repeats .,function:Component of intercellular desmosome junctions. Involved in the interaction of plaque proteins and intermediate filaments mediating cell-cell adhesion.,similarity:Contains 4 cadherin domains.,tissue specificity:Epidermis, tongue, tonsil and esophagus.,

Nanjing BYabscience technology Co.,Ltd

**Background**

This gene encodes a member of the desmoglein protein subfamily. Desmogleins, along with desmocollins, are cadherin-like transmembrane glycoproteins that are major components of the desmosome. Desmosomes are cell-cell junctions that help resist shearing forces and are found in high concentrations in cells subject to mechanical stress. This gene is found in a cluster with other desmoglein family members on chromosome 18. The encoded protein has been identified as a target of auto-antibodies in the autoimmune skin blistering disease pemphigus foliaceus. Disruption of this gene has also been associated with the skin diseases palmoplantar keratoderma and erythroderma. [provided by RefSeq, Feb 2015],

**matters needing attention**

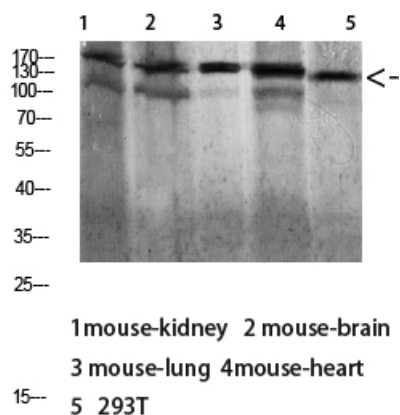
Avoid repeated freezing and thawing!

**Usage suggestions**

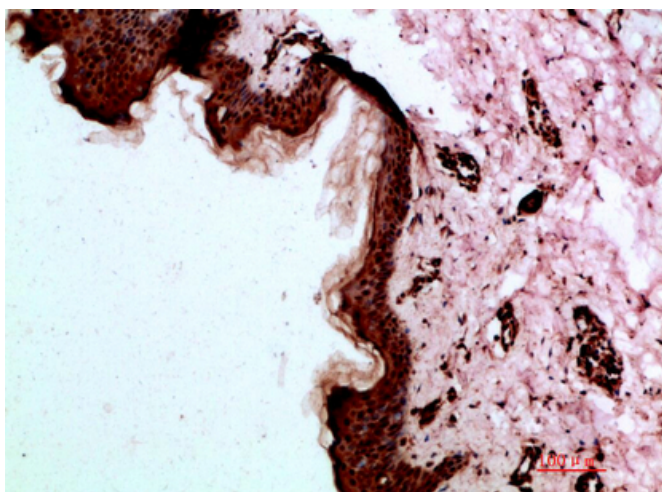
This product can be used in immunological reaction related experiments. For more information, please consult technical personnel.



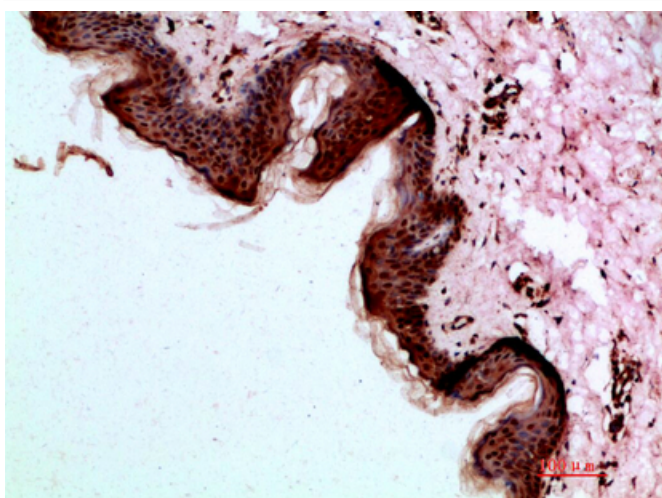
## Products Images



Western blot analysis of 293T lysate, antibody was diluted at 1000. Secondary antibody(catalog#:RS0002) was diluted at 1:20000



Immunohistochemical analysis of paraffin-embedded human-skin, antibody was diluted at 1:200



Immunohistochemical analysis of paraffin-embedded human-skin, antibody was diluted at 1:200