



# MCM10 rabbit pAb

Catalog No	BYab-17257
Isotype	IgG
Reactivity	Human, Mouse
Applications	IHC, WB
Gene Name	MCM10 PRO2249
Protein Name	Protein MCM10 homolog (HsMCM10)
Immunogen	Synthesized peptide derived from human N-terminal MCM10
Specificity	This antibody detects endogenous levels of MCM10 at Human, Mouse
Formulation	Liquid in PBS containing 50% glycerol, and 0.02% sodium azide.
Source	Rabbit, polyclonal
Purification	The antibody was affinity-purified from rabbit serum by affinity-chromatography using specific immunogen.
Dilution	WB 1:500-2000 IHC 1:50-200
Concentration	1 mg/ml
Purity	≥90%
Storage Stability	-20°C/1 year
Synonyms	Protein MCM10 homolog (HsMCM10)
Observed Band	
Cell Pathway	Nucleus . Colocalizes with ORC2 in nuclei foci. Associated with chromatin in S phase. From early to mid-S phase located in discrete nuclear foci. In early S phase, several hundred foci appeared throughout the nucleus. In mid-S phase, the foci appeared at the nuclear periphery and nucleolar regions. In the late S and G phases localized to nucleoli.
Tissue Specificity	
Function	Acts as a replication initiation factor that brings together the MCM2-7 helicase and the DNA polymerase alpha/primase complex in order to initiate DNA replication. Additionally, plays a role in preventing DNA damage during replication. Key effector of the RBBP6 and ZBTB38-mediated regulation of DNA-replication and common fragile sites stability; acts as a direct target of transcriptional repression by ZBTB38 .
Background	

Nanjing BYabscience technology Co.,Ltd



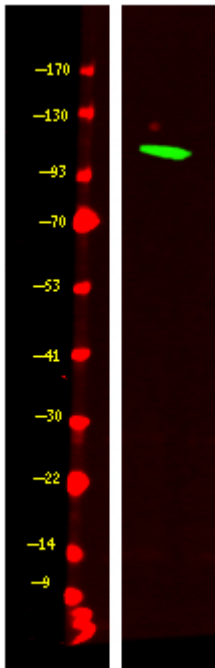
**matters needing attention**

Avoid repeated freezing and thawing!

**Usage suggestions**

This product can be used in immunological reaction related experiments. For more information, please consult technical personnel.

## Products Images



Western Blot analysis of Hela cell lysis, using primary antibody at 1:1000 dilution. Secondary antibody(catalog#:RS23920) was diluted at 1:10000

Nanjing BYabscience technology Co.,Ltd

网址: [www.njbybio.com](http://www.njbybio.com)

官方热线: 025-5229-8998

监督电话: 15950492658