



Cytokeratin 4 mouse mAb(ABT061)

Catalog No	BYab-17644
Isotype	IgG
Reactivity	Human
Applications	IHC, WB
Gene Name	KRT4 CYK4
Protein Name	Cytokeratin-4
Immunogen	Synthesized peptide derived from human CK4
Specificity	The antibody can specifically recognize human CK4 protein, and shows no cross reaction with CK5, 6, 7, 8, 14, 15, 17, 20.
Formulation	Liquid in PBS containing 50% glycerol, 0.5% BSA and 0.119% sodium azide.
Source	Mouse, Monoclonal/IgG1, Kappa
Purification	The antibody was affinity-purified from mouse ascites by affinity-chromatography using specific immunogen.
Dilution	IHC-p 1:100-500, WB 1:200-1000, IF 1:100-500
Concentration	1 mg/ml
Purity	≥90%
Storage Stability	-20°C/1 year
Synonyms	Keratin, type II cytoskeletal 4 (Cytokeratin-4;CK-4;Keratin-4;K4;Type-II keratin Kb4)
Observed Band	
Cell Pathway	Esophageal squamous carcinoma
Tissue Specificity	Detected in the suprabasal layer of the stratified epithelium of the esophagus, exocervix, vagina, mouth and lingual mucosa, and in cells and cell clusters in the mucosa and serous gland ducts of the esophageal submucosa (at protein level). Expressed widely in the exocervix and esophageal epithelium, with lowest levels detected in the basal cell layer.
Function	disease:Defects in KRT4 are a cause of white sponge nevus of cannon (WSN) [MIM:193900]. WSN is a rare autosomal dominant disorder which predominantly affects non-cornified stratified squamous epithelia. Clinically, it is characterized by the presence of soft, white, and spongy plaques in the oral mucosa. The characteristic histopathologic features are epithelial thickening, parakeratosis, and vacuolization of the suprabasal layer of oral epithelial keratinocytes. Less frequently the mucous membranes of the nose, esophagus, genitalia and rectum are involved.,miscellaneous:There are two types of cytoskeletal and microfibrillar

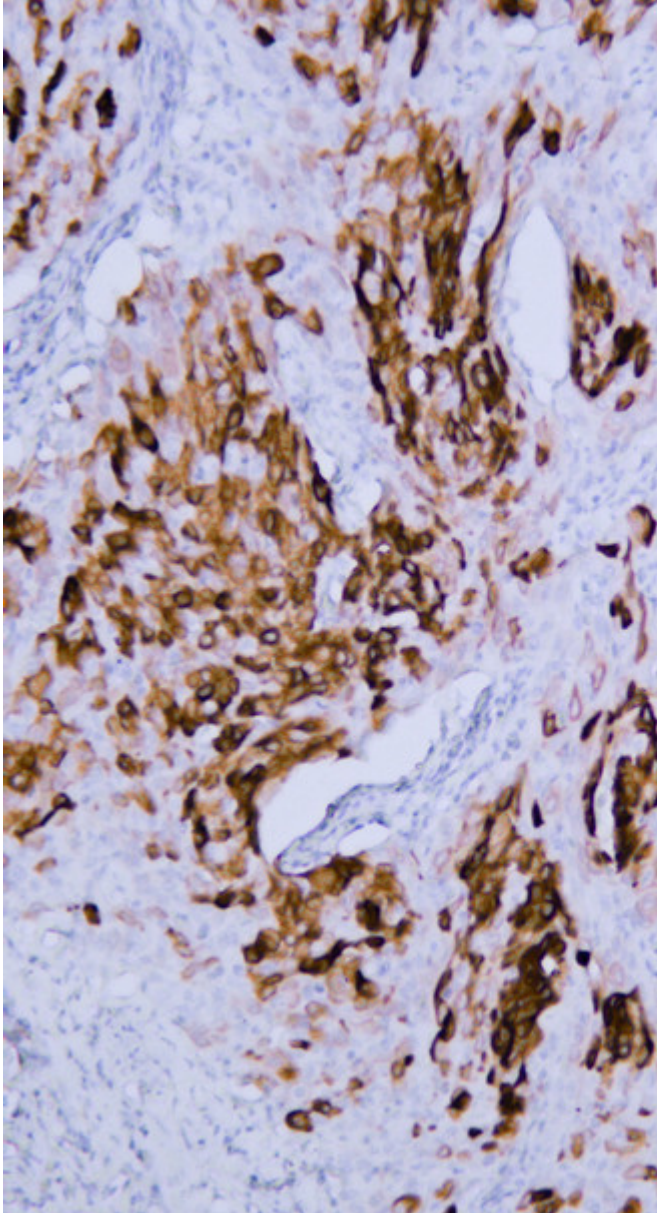
Nanjing BYabscience technology Co.,Ltd



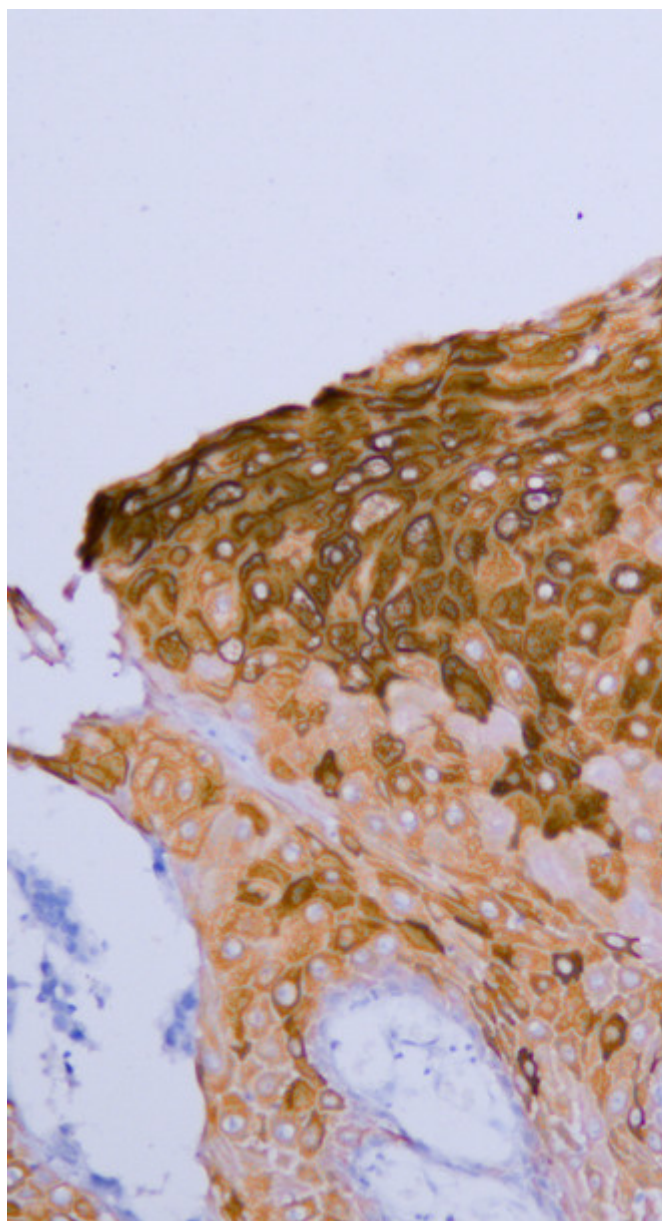
	keratin: I (acidic; 40-55 kDa) and II (neutral to basic; 56-70 kDa).,polymorphism:Three alleles of K4 are known: K4A2 (shown here), K4A1 and K4B.,similarity:Belongs to the intermediate filament family.,subunit:Heterotetramer of two type I and two type II keratins. Ke
Background	keratin 4(KRT4) Homo sapiens The protein encoded by this gene is a member of the keratin gene family. The type II cytokeratins consist of basic or neutral proteins which are arranged in pairs of heterotypic keratin chains coexpressed during differentiation of simple and stratified epithelial tissues. This type II cytokeratin is specifically expressed in differentiated layers of the mucosal and esophageal epithelia with family member KRT13. Mutations in these genes have been associated with White Sponge Nevus, characterized by oral, esophageal, and anal leukoplakia. The type II cytokeratins are clustered in a region of chromosome 12q12-q13. [provided by RefSeq, Jul 2008],
matters needing attention	Avoid repeated freezing and thawing!
Usage suggestions	This product can be used in immunological reaction related experiments. For more information, please consult technical personnel.



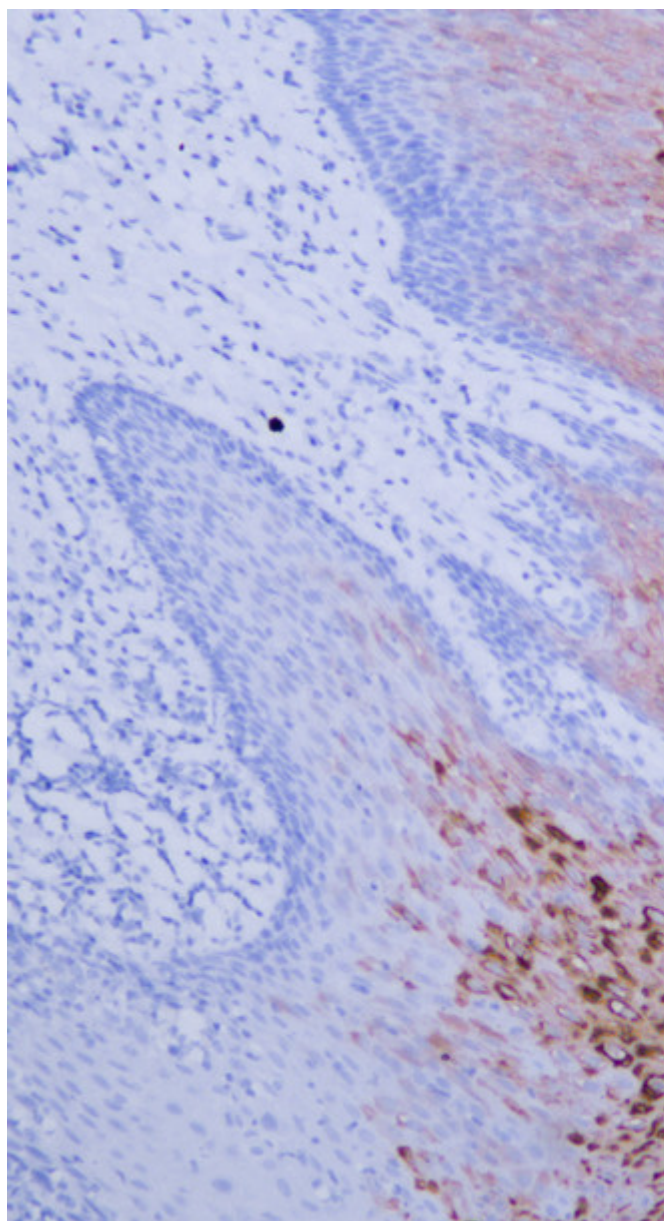
Products Images



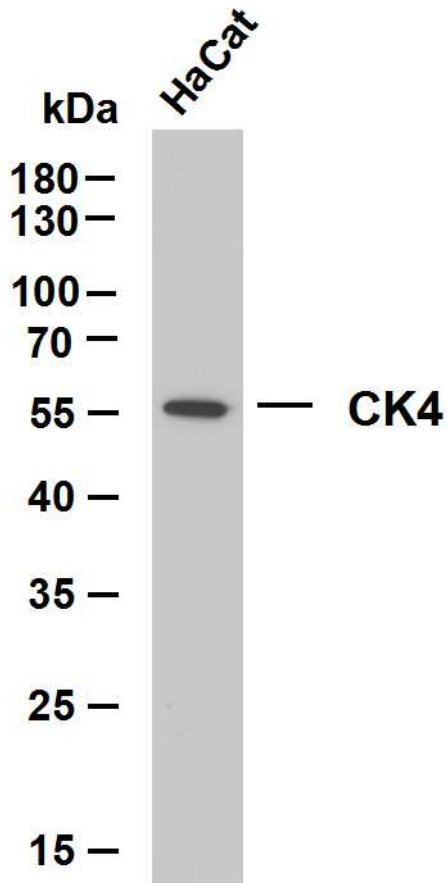
Human cervical squamous cell carcinoma tissue was stained with Anti-Cytokeratin 4 (ABT061) Antibody



Human esophageal squamous cell carcinoma tissue was stained with Anti-Cytokeratin 4 (ABT061) Antibody



Human oral squamous cell carcinoma tissue was stained with Anti-Cytokeratin 4 (ABT061) Antibody



HaCat whole cell lysates were separated by 10% SDS-PAGE, and the membrane was blotted with anti-CK4(ABT061) antibody. The HRP-conjugated Goat anti-Mouse IgG(H + L) antibody was used to detect the antibody. Lane 1: HaCat Predicted band size: 57kDa Observed band size: 57kDa