



# ERG Rabbit mAb

Catalog No	BYab-17722
Isotype	IgG
Gene Name	ERG
Alternative Names	ERG; erg-3; p55; KCNH2
Background	This gene encodes a member of the erythroblast transformation-specific (ETS) family of transcriptions factors. All members of this family are key regulators of embryonic development, cell proliferation, differentiation, angiogenesis, inflammation, and apoptosis. The protein encoded by this gene is mainly expressed in the nucleus. It contains an ETS DNA-binding domain and a PNT (pointed) domain which is implicated in the self-association of chimeric oncoproteins.
Research Field	Epigenetics and Nuclear Signaling
Product Categories	Primary antibody
Host	Rabbit
Reactivity	Human,Mouse,Rat
Application	WB,IHC-P,ICC/IF,ChIP
Dilution Ratio	WB: 1/500-1/1000 IHC: 1/50-1/100 IF: 1/50-1/200 ChIP: 1/20
Molecular Weight	Calculated MW: 54 kDa; Observed MW: 54 kDa
Clonality	Monoclonal Antibody
Immunogen	A synthesized peptide derived from human ERG
Clonality No.	R09-9J7
Purification	Affinity Chromatography
Conjugation	Unconjugated
Modification	Unmodified
Form	Liquid
Buffer System	Rabbit IgG in phosphate buffered saline , pH 7.4, 150mM NaCl, 0.02% sodium azide and 50% glycerol.
Storage	Store at 4°C short term. Aliquot and store at -20°C long term. Avoid freeze/thaw cycles.
Background	Dehydrogenase that mediates the formation of 2,5-dihydroxybenzoic acid (2,5-DHBA), a siderophore that shares structural similarities with bacterial enterobactin and associates with LCN2, thereby playing a key role in iron

Nanjing BYabscience technology Co.,Ltd



assimilation and homeostasis.

**matters needing  
attention**

Avoid repeated freezing and thawing!

**Usage suggestions**

This product can be used in immunological reaction related experiments. For more information, please consult technical personnel.

Nanjing BYabscience technology Co.,Ltd

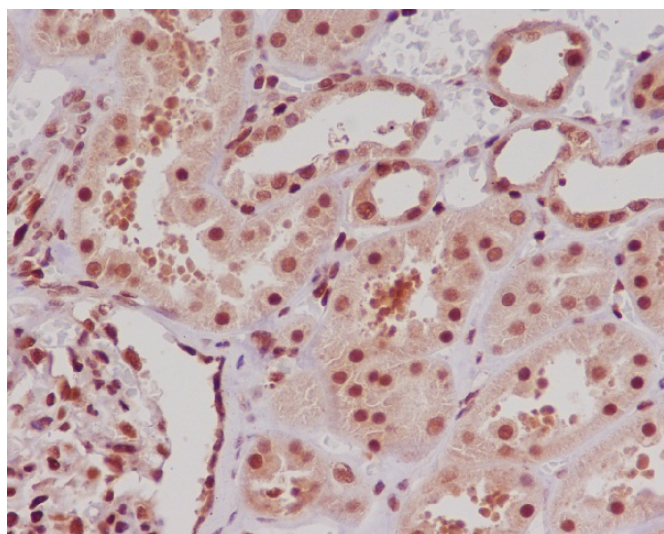
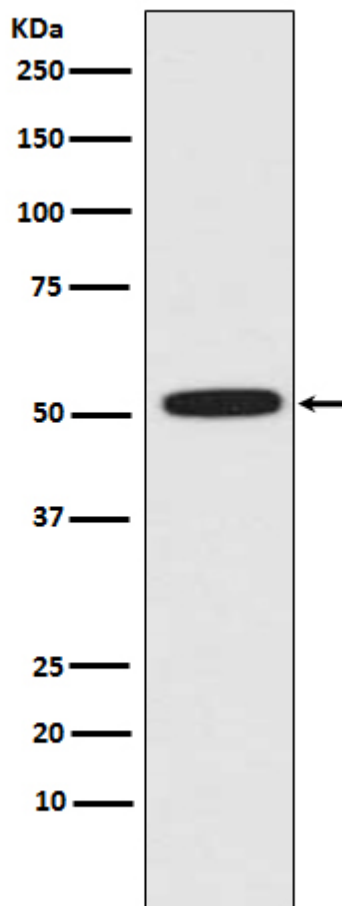
网址: [www.njbybio.com](http://www.njbybio.com)

官方热线: 025-5229-8998

监督电话: 15950492658



## Products Images



Nanjing BYabs science technology Co.,Ltd