



# ATG7 Rabbit mAb

Catalog No	BYab-17817
Isotype	IgG
Reactivity	Human,Mouse,Rat
Applications	WB
Gene Name	ATG7
Alternative Names	hAGP7; Ubiquitin-activating enzyme E1-like protein; APG7L
Research Field	Cell Biology
Product Categories	Primary antibody
Host	Rabbit
Molecular Weight	Calculated MW: 78 kDa; Observed MW: 78 kDa
Clonality	Monoclonal Antibody
Clonality No.	R09-4E8
Dilution	WB: 1/500-1/1000
Immunogen	A synthetic peptide of human Apg7
Purification	Affinity Purified
Conjugation	Unconjugated
Modification	Unmodified
Form	Liquid
Buffer System	50mM Tris-Glycine(pH 7.4), 0.15M NaCl, 40% Glycerol, 0.01% Sodium azide and 0.05% BSA
Concentration	1 mg/ml
Purity	≥90%
Storage	Store at 4°C short term. Aliquot and store at -20°C long term. Avoid freeze/thaw cycles.
Background	The molecular machinery of autophagy was largely discovered in yeast and referred to as autophagy-related (Atg) genes. Formation of the autophagosome involves a ubiquitin-like conjugation system in which Atg12 is covalently bound to Atg5 and targeted to autophagosome vesicles. This conjugation reaction is mediated by the ubiquitin E1-like enzyme Atg7 and the E2-like enzyme Atg10.

Nanjing BYabscience technology Co.,Ltd



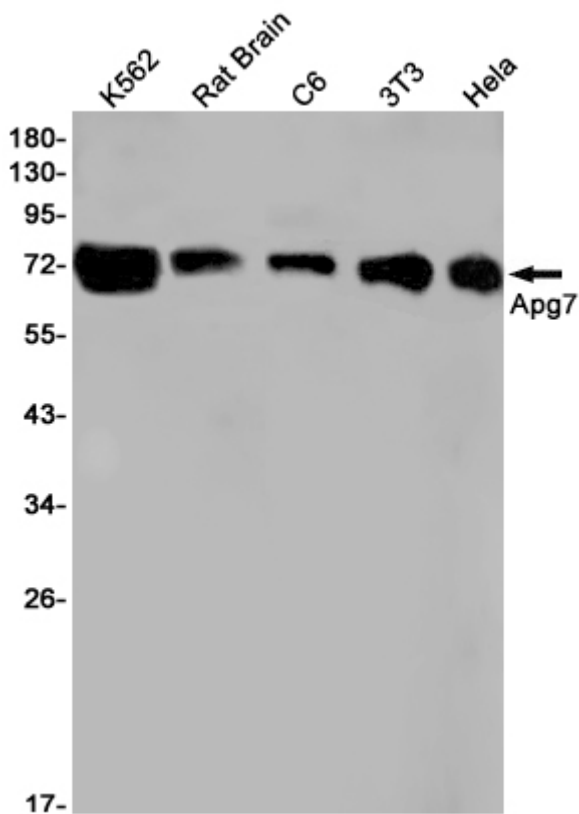
**matters needing attention**

Avoid repeated freezing and thawing!

**Usage suggestions**

This product can be used in immunological reaction related experiments. For more information, please consult technical personnel.

**Products Images**



Nanjing BYabs science technology Co.,Ltd

网址: [www.njbybio.com](http://www.njbybio.com)

官方热线: 025-5229-8998

监督电话: 15950492658