



METTL7A Rabbit pAb

| | |
|---------------------------|--|
| Catalog No | BYab-17875 |
| Isotype | IgG |
| Reactivity | Human |
| Applications | WB,IHC-P |
| Gene Name | METTL7A |
| Alternative Names | methyltransferase like 7A; AAM-B |
| Research Field | Epigenetics and Nuclear Signaling |
| Product Categories | Primary antibody |
| Host | Rabbit |
| Molecular Weight | Calculated MW: 28 kDa; Observed MW: 28 kDa |
| Clonality | Polyclonal Antibody |
| Clonality No. | - |
| Dilution | WB: 1/500-1/1000 IHC: 1/50-1/100 |
| Immunogen | Fusion protein of human METTL7A |
| Purification | Affinity Purified |
| Conjugation | Unconjugated |
| Modification | Unmodified |
| Form | Liquid |
| Buffer System | pH 7.4 PBS, 0.05% NaN ₃ , 40% Glycerol |
| Concentration | 1 mg/ml |
| Purity | ≥90% |
| Storage | Store at 4°C short term. Aliquot and store at -20°C long term. Avoid freeze/thaw cycles. |
| Background | Putative methyltransferase. |
| matters needing attention | Avoid repeated freezing and thawing! |

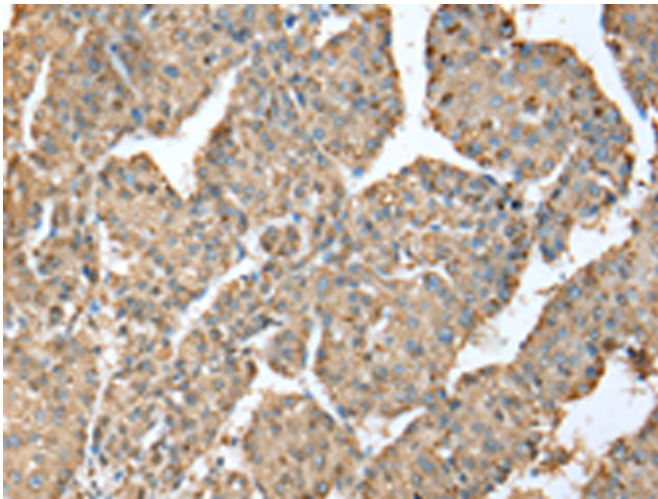
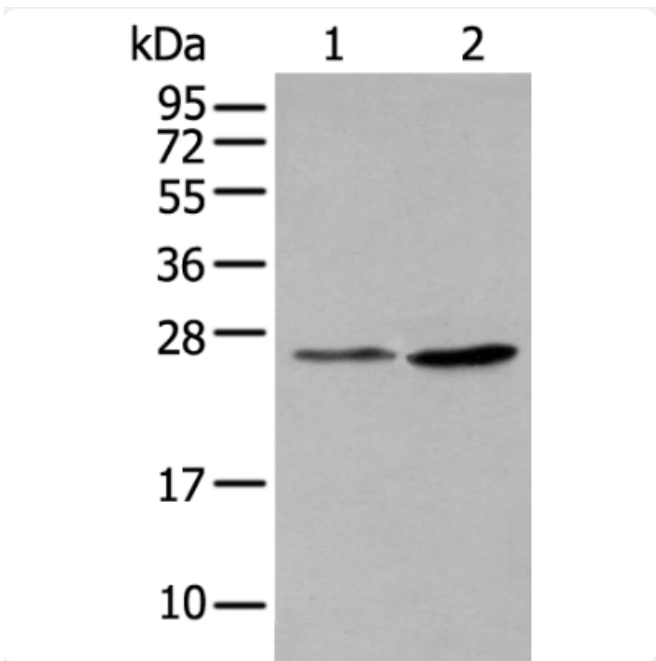
Nanjing BYabscience technology Co.,Ltd



Usage suggestions

This product can be used in immunological reaction related experiments. For more information, please consult technical personnel.

Products Images



Nanjing BYabs science technology Co.,Ltd

网址: www.njbybio.com

官方热线: 025-5229-8998

监督电话: 15950492658