



Cytochrome C Rabbit mAb

Catalog No	BYab-17878
Isotype	IgG
Reactivity	Human,Mouse,Rat
Applications	WB,ICC/IF,IP
Gene Name	CYCS
Alternative Names	CYCS; CYC; Cytochrome c
Research Field	Cardiovascular
Product Categories	Primary antibody
Host	Rabbit
Molecular Weight	Calculated MW: 12 kDa; Observed MW: 12 kDa
Clonality	Monoclonal Antibody
Clonality No.	R02-9A7
Dilution	WB: 1/500-1/1000 IF: 1/50-1/200 IP: 1/20
Immunogen	A synthetic peptide of human Cytochrome C
Purification	Affinity Purified
Conjugation	Unconjugated
Modification	Unmodified
Form	Liquid
Buffer System	50mM Tris-Glycine(pH 7.4), 0.15M NaCl, 40% Glycerol, 0.01% Sodium azide and 0.05% BSA
Concentration	1 mg/ml
Purity	≥90%
Storage	Store at 4°C short term. Aliquot and store at -20°C long term. Avoid freeze/thaw cycles.
Background	CYCS Electron carrier protein. The oxidized form of the cytochrome c heme group can accept an electron from the heme group of the cytochrome c1 subunit of cytochrome reductase. Cytochrome c then transfers this electron to the cytochrome oxidase complex, the final protein carrier in the mitochondrial electron-transport chain.

Nanjing BYabscience technology Co.,Ltd



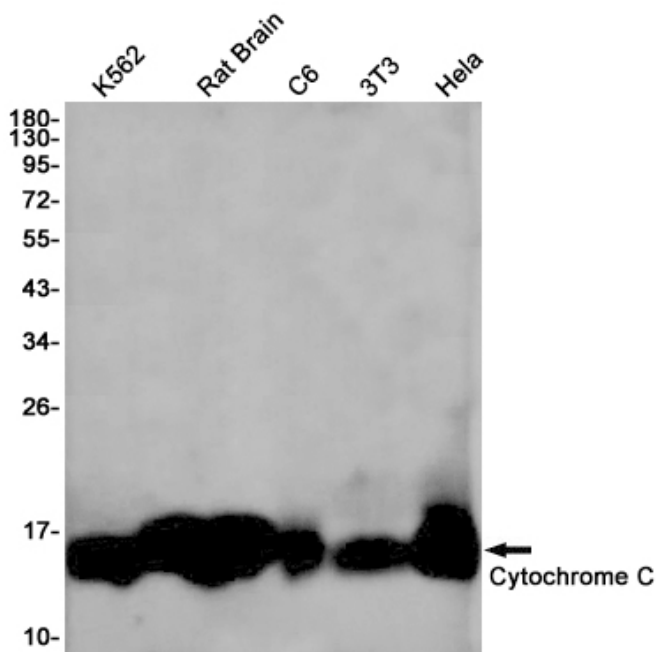
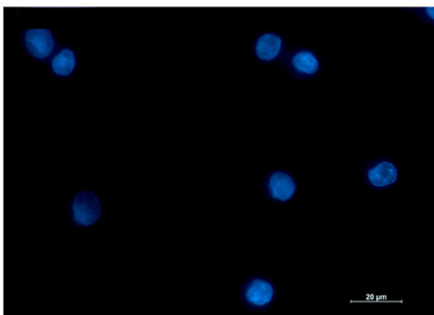
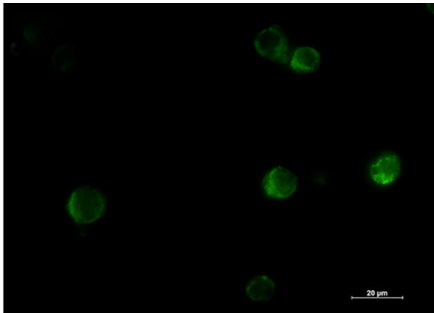
matters needing attention

Avoid repeated freezing and thawing!

Usage suggestions

This product can be used in immunological reaction related experiments. For more information, please consult technical personnel.

Products Images



Nanjing BYabscience technology Co.,Ltd

网址: www.njbybio.com

官方热线: 025-5229-8998

监督电话: 15950492658