



RNA Polymerase beta Rabbit mAb

Catalog No	BYab-17902
Isotype	IgG
Reactivity	Escherichia Coli
Applications	WB,IP
Gene Name	rpoB
Alternative Names	groN; nitB; rif; RNA pol beta; RNA polymerase subunit beta; ron; rpoB; stl; stv; tabD; Transcriptase subunit beta
Research Field	Epigenetics and Nuclear Signaling
Product Categories	Primary antibody
Host	Rabbit
Molecular Weight	Calculated MW: 151 kDa; Observed MW: 151 kDa
Clonality	Monoclonal Antibody
Clonality No.	R01-3C9
Dilution	WB: 1/500-1/1000 IP: 1/20
Immunogen	A synthesized peptide derived from RNA polymerase beta
Purification	Affinity Chromatography
Conjugation	Unconjugated
Modification	Unmodified
Form	Liquid
Buffer System	Rabbit IgG in phosphate buffered saline , pH 7.4, 150mM NaCl, 0.02% sodium azide and 50% glycerol.
Concentration	1 mg/ml
Purity	≥90%
Storage	Store at 4°C short term. Aliquot and store at -20°C long term. Avoid freeze/thaw cycles.
Background	RNA polymerase beta (rpoB) is the β subunit of the bacterial RNA polymerase and is the subunit which possesses the polymerase activity. This protein is a highly conserved enzyme contained by many bacteria and has been reported as a useful marker for studies in bacterial identification and ecology.

Nanjing BYabscience technology Co.,Ltd



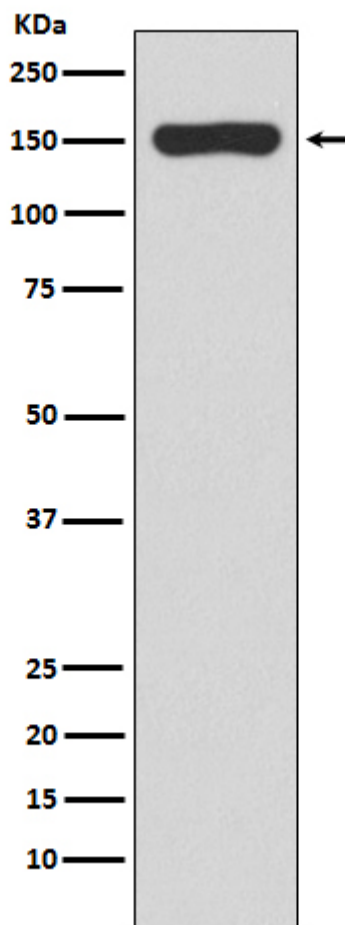
matters needing attention

Avoid repeated freezing and thawing!

Usage suggestions

This product can be used in immunological reaction related experiments. For more information, please consult technical personnel.

Products Images



Nanjing BYabs science technology Co.,Ltd

网址: www.njbybio.com

官方热线: 025-5229-8998

监督电话: 15950492658