



Melanopsin Polyclonal Antibody

Catalog No	BYab-13414
Isotype	IgG
Reactivity	Human;Rat;Mouse;
Applications	WB;ELISA;IHC
Gene Name	OPN4
Protein Name	Melanopsin
Immunogen	The antiserum was produced against synthesized peptide derived from human OPN4. AA range:429-478
Specificity	Melanopsin Polyclonal Antibody detects endogenous levels of Melanopsin protein.
Formulation	Liquid in PBS containing 50% glycerol, 0.5% BSA and 0.02% sodium azide.
Source	Polyclonal, Rabbit,IgG
Purification	The antibody was affinity-purified from rabbit antiserum by affinity-chromatography using epitope-specific immunogen.
Dilution	WB 1:500-2000;IHC-p 1:50-300; ELISA 2000-20000
Concentration	1 mg/ml
Purity	≥90%
Storage Stability	-20°C/1 year
Synonyms	OPN4; MOP; Melanopsin; Opsin-4
Observed Band	55kD
Cell Pathway	Cell membrane ; Multi-pass membrane protein . Cell projection, axon . Cell projection, dendrite . Perikaryon .
Tissue Specificity	Expressed in the retina.
Function	caution:The sequence shown here is derived from an Ensembl automatic analysis pipeline and should be considered as preliminary data.,function:Photoreceptor required for regulation of circadian rhythm. Contributes to pupillar reflex and other non-image forming responses to light. May be able to isomerize covalently bound all-trans retinal back to 11-cis retinal.,similarity:Belongs to the G-protein coupled receptor 1 family.,similarity:Belongs to the G-protein coupled receptor 1 family. Opsin subfamily.,subcellular location:Found in soma, dendrites and proximal part of axons of certain retinal ganglion cells.,tissue specificity:Eye. Expression is restricted within the ganglion and amacrine cell layers of the retina.,

Nanjing BYabscience technology Co.,Ltd

**Background**

Opsins are members of the guanine nucleotide-binding protein (G protein)-coupled receptor superfamily. This gene encodes a photoreceptive opsin protein that is expressed within the ganglion and amacrine cell layers of the retina. In mouse, retinal ganglion cell axons expressing this gene projected to the suprachiasmatic nucleus and other brain nuclei involved in circadian photoentrainment. In mouse, this protein is coupled to a transient receptor potential (TRP) ion channel through a G protein signaling pathway and produces a physiologic light response via membrane depolarization and increased intracellular calcium. The protein functions as a sensory photopigment and may also have photoisomerase activity. Experiments with knockout mice indicate that this gene attenuates, but does not abolish, photoentrainment. Alternative splicing results in multiple transcript variants encoding different isoforms. [provided by Ref

matters needing attention

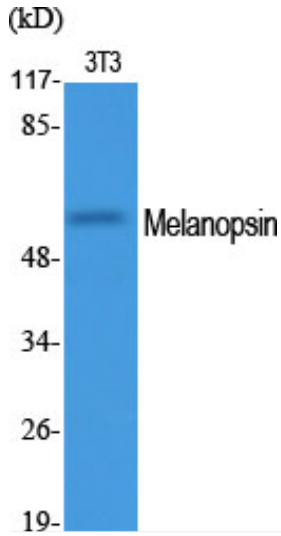
Avoid repeated freezing and thawing!

Usage suggestions

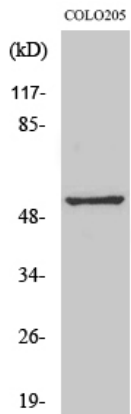
This product can be used in immunological reaction related experiments. For more information, please consult technical personnel.



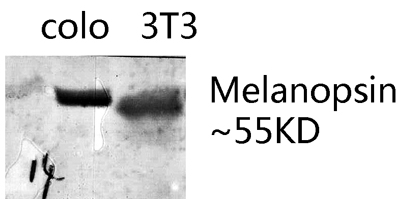
Products Images



Western Blot analysis of various cells using Melanopsin Polyclonal Antibody



Western Blot analysis of COLO205 cells using Melanopsin Polyclonal Antibody



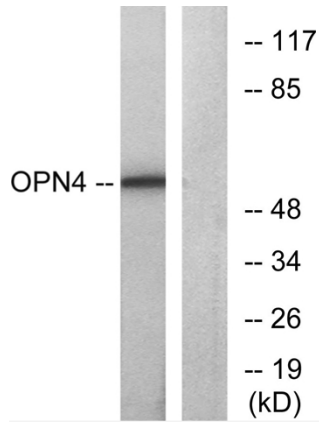
Western blot analysis of various lysis using Melanopsin Polyclonal Antibody. Secondary antibody(catalog#:RS0002) was diluted at 1:20000

Nanjing BYabs science technology Co.,Ltd

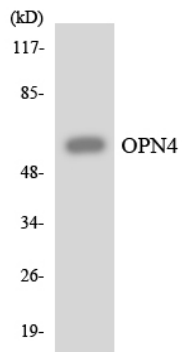
网址: www.njbybio.com

官方热线: 025-5229-8998

监督电话: 15950492658



Western blot analysis of lysates from COLO cells, using OPN4 Antibody. The lane on the right is blocked with the synthesized peptide.



Western blot analysis of the lysates from HeLa cells using OPN4 antibody.