



MRGE Polyclonal Antibody

| | |
|---------------------------|--|
| Catalog No | BYab-13422 |
| Isotype | IgG |
| Reactivity | Human;Mouse;Rat |
| Applications | WB;ELISA;IHC |
| Gene Name | MRGPRE |
| Protein Name | Mas-related G-protein coupled receptor member E |
| Immunogen | The antiserum was produced against synthesized peptide derived from human MRGRE. AA range:171-220 |
| Specificity | MRGE Polyclonal Antibody detects endogenous levels of MRGE protein. |
| Formulation | Liquid in PBS containing 50% glycerol, 0.5% BSA and 0.02% sodium azide. |
| Source | Polyclonal, Rabbit,IgG |
| Purification | The antibody was affinity-purified from rabbit antiserum by affinity-chromatography using epitope-specific immunogen. |
| Dilution | WB 1:500-2000;IHC-p 1:50-300; ELISA 2000-20000 |
| Concentration | 1 mg/ml |
| Purity | ≥90% |
| Storage Stability | -20°C/1 year |
| Synonyms | MRGPRE; GPR167; MRGE; Mas-related G-protein coupled receptor member E; G-protein coupled receptor 167 |
| Observed Band | 30kD |
| Cell Pathway | Cell membrane; Multi-pass membrane protein. |
| Tissue Specificity | |
| Function | function:Orphan receptor. May regulate nociceptor function and/or development, including the sensation or modulation of pain.,similarity:Belongs to the G-protein coupled receptor 1 family. Mas subfamily., |
| Background | function:Orphan receptor. May regulate nociceptor function and/or development, including the sensation or modulation of pain.,similarity:Belongs to the G-protein coupled receptor 1 family. Mas subfamily., |
| matters needing attention | Avoid repeated freezing and thawing! |

Nanjing BYabscience technology Co.,Ltd



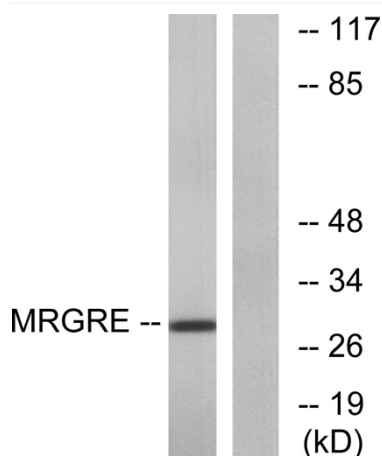
Usage suggestions

This product can be used in immunological reaction related experiments. For more information, please consult technical personnel.

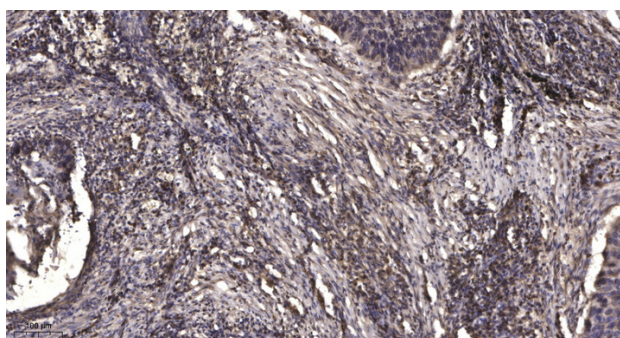
Products Images



Western Blot analysis of various cells using MRGE Polyclonal Antibody



Western blot analysis of lysates from HeLa cells, using MRGRE Antibody. The lane on the right is blocked with the synthesized peptide.



Immunohistochemical analysis of paraffin-embedded human Squamous cell carcinoma of lung. 1, Antibody was diluted at 1:200(4° overnight). 2, Tris-EDTA,pH9.0 was used for antigen retrieval. 3,Secondary antibody was diluted at 1:200(room temperature, 45min).

Nanjing BYabs science technology Co.,Ltd

网址: www.njbybio.com

官方热线: 025-5229-8998

监督电话: 15950492658