



MRGF Polyclonal Antibody

Catalog No	BYab-13423
Isotype	IgG
Reactivity	Human;Mouse;Rat
Applications	WB;IHC
Gene Name	MRGPRF
Protein Name	Mas-related G-protein coupled receptor member F
Immunogen	The antiserum was produced against synthesized peptide derived from human MRGRF. AA range:271-320
Specificity	MRGF Polyclonal Antibody detects endogenous levels of MRGF protein.
Formulation	Liquid in PBS containing 50% glycerol, 0.5% BSA and 0.02% sodium azide.
Source	Polyclonal, Rabbit,IgG
Purification	The antibody was affinity-purified from rabbit antiserum by affinity-chromatography using epitope-specific immunogen.
Dilution	WB 1:500-2000;IHC-p 1:50-300
Concentration	1 mg/ml
Purity	≥90%
Storage Stability	-20°C/1 year
Synonyms	MRGPRF; GPR140; GPR168; MRGF; PSEC0142; Mas-related G-protein coupled receptor member F; Mas-related gene F protein; G-protein coupled receptor 140; G-protein coupled receptor 168
Observed Band	40kD
Cell Pathway	Cell membrane; Multi-pass membrane protein.
Tissue Specificity	Brain,Placenta,Uterus,Whole embryo,
Function	function:Orphan receptor. May bind to a neuropeptide and may regulate nociceptor function and/or development, including the sensation or modulation of pain.,similarity:Belongs to the G-protein coupled receptor 1 family.,similarity:Belongs to the G-protein coupled receptor 1 family. Mas subfamily.,
Background	function:Orphan receptor. May bind to a neuropeptide and may regulate nociceptor function and/or development, including the sensation or modulation of pain.,similarity:Belongs to the G-protein coupled receptor 1

Nanjing BYabscience technology Co.,Ltd



family.,similarity:Belongs to the G-protein coupled receptor 1 family. Mas subfamily.,

matters needing attention

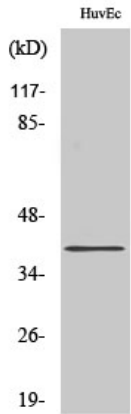
Avoid repeated freezing and thawing!

Usage suggestions

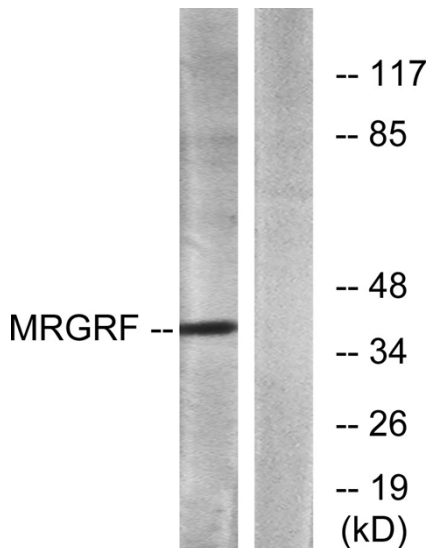
This product can be used in immunological reaction related experiments. For more information, please consult technical personnel.



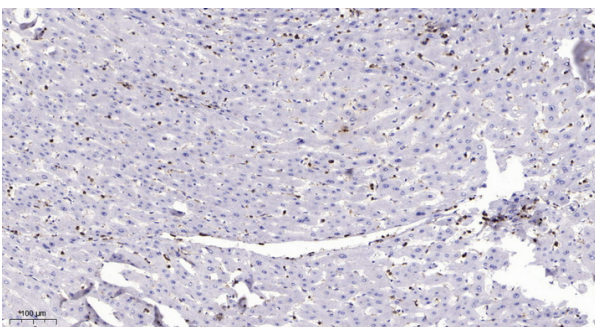
Products Images



Western Blot analysis of various cells using MRGF Polyclonal Antibody



Western blot analysis of lysates from HUVEC cells, using MRGRF Antibody. The lane on the right is blocked with the synthesized peptide.



Immunohistochemical analysis of paraffin-embedded human liver cancer. 1, Antibody was diluted at 1:200(4° overnight). 2, Tris-EDTA,pH9.0 was used for antigen retrieval. 3,Secondary antibody was diluted at 1:200(room temperature, 45min).