



# T2R45 Polyclonal Antibody

Catalog No	BYab-13685
Isotype	IgG
Reactivity	Human;Rat;Mouse;
Applications	WB;ELISA
Gene Name	TAS2R45
Protein Name	Taste receptor type 2 member 45
Immunogen	The antiserum was produced against synthesized peptide derived from human TAS2R45. AA range:221-270
Specificity	T2R45 Polyclonal Antibody detects endogenous levels of T2R45 protein.
Formulation	Liquid in PBS containing 50% glycerol, 0.5% BSA and 0.02% sodium azide.
Source	Polyclonal, Rabbit,IgG
Purification	The antibody was affinity-purified from rabbit antiserum by affinity-chromatography using epitope-specific immunogen.
Dilution	Western Blot: 1/500 - 1/2000. ELISA: 1/5000. Not yet tested in other applications.
Concentration	1 mg/ml
Purity	≥90%
Storage Stability	-20°C/1 year
Synonyms	TAS2R45; GPR59; Taste receptor type 2 member 45; T2R45; G-protein coupled receptor 59
Observed Band	35kD
Cell Pathway	Membrane; Multi-pass membrane protein.
Tissue Specificity	Expressed in subsets of taste receptor cells of the tongue and exclusively in gustducin-positive cells.
Function	function:Receptor that may play a role in the perception of bitterness and is gustducin-linked. May play a role in sensing the chemical composition of the gastrointestinal content. The activity of this receptor may stimulate alpha gustducin, mediate PLC-beta-2 activation and lead to the gating of TRPM5.,miscellaneous:Most taste cells may be activated by a limited number of bitter compounds; individual taste cells can discriminate among bitter stimuli.,similarity:Belongs to the G-protein coupled receptor T2R family.,tissue specificity:Expressed in subsets of taste receptor cells of the tongue and exclusively in gustducin-positive cells.,

Nanjing BYabscience technology Co.,Ltd



## Background

function: Receptor that may play a role in the perception of bitterness and is gustducin-linked. May play a role in sensing the chemical composition of the gastrointestinal content. The activity of this receptor may stimulate alpha gustducin, mediate PLC-beta-2 activation and lead to the gating of TRPM5. miscellaneous: Most taste cells may be activated by a limited number of bitter compounds; individual taste cells can discriminate among bitter stimuli. similarity: Belongs to the G-protein coupled receptor T2R family. tissue specificity: Expressed in subsets of taste receptor cells of the tongue and exclusively in gustducin-positive cells.

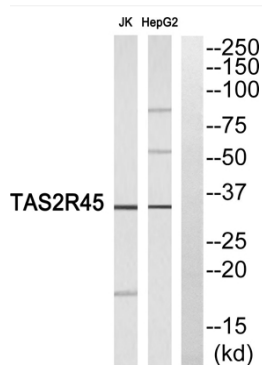
## matters needing attention

Avoid repeated freezing and thawing!

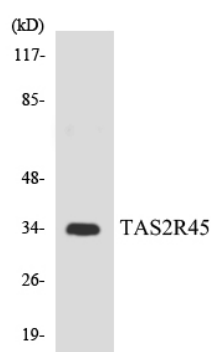
## Usage suggestions

This product can be used in immunological reaction related experiments. For more information, please consult technical personnel.

## Products Images



Western blot analysis of TAS2R45 Antibody. The lane on the right is blocked with the TAS2R45 peptide.



Western blot analysis of the lysates from HepG2 cells using TAS2R45 antibody.

**Nanjing BYabscience technology Co.,Ltd**

网址: [www.njbybio.com](http://www.njbybio.com)

官方热线: 025-5229-8998

监督电话: 15950492658