



# FKBPL Polyclonal Antibody

<b>Catalog No</b>	BYab-13928
<b>Isotype</b>	IgG
<b>Reactivity</b>	Human;Mouse;Rat
<b>Applications</b>	WB;IHC;IF;ELISA
<b>Gene Name</b>	FKBPL
<b>Protein Name</b>	FK506-binding protein-like
<b>Immunogen</b>	The antiserum was produced against synthesized peptide derived from human FKBPL. AA range:251-300
<b>Specificity</b>	FKBPL Polyclonal Antibody detects endogenous levels of FKBPL protein.
<b>Formulation</b>	Liquid in PBS containing 50% glycerol, 0.5% BSA and 0.02% sodium azide.
<b>Source</b>	Polyclonal, Rabbit,IgG
<b>Purification</b>	The antibody was affinity-purified from rabbit antiserum by affinity-chromatography using epitope-specific immunogen.
<b>Dilution</b>	WB: 1/500 - 1/2000. IHC: 1/100 - 1/300. ELISA: 1/20000.. IF 1:50-200
<b>Concentration</b>	1 mg/ml
<b>Purity</b>	≥90%
<b>Storage Stability</b>	-20°C/1 year
<b>Synonyms</b>	FKBPL; DIR1; NG7; FK506-binding protein-like; WAF-1/CIP1 stabilizing protein 39; WISp39
<b>Observed Band</b>	38kD
<b>Cell Pathway</b>	endoplasmic reticulum membrane,cytosol,
<b>Tissue Specificity</b>	Ubiquitously expressed with higher levels in testis.
<b>Function</b>	function:May be involved in response to X-ray. Regulates p21 protein stability by binding to Hsp90 and p21.,PTM:Phosphorylated upon DNA damage, probably by ATM or ATR.,similarity:Contains 3 TPR repeats.,subunit:Forms a ternary complex with CDKN1A/p21 and HSP90AB1/Hsp90.,tissue specificity:Ubiquitously expressed with higher levels in testis.,
<b>Background</b>	The protein encoded by this gene has similarity to the immunophilin protein family, which play a role in immunoregulation and basic cellular processes involving protein folding and trafficking. The encoded protein is thought to have a potential role in the induced radioresistance. Also it appears to have some involvement in the control of the cell cycle. [provided by RefSeq, Jul 2008],

**Nanjing BYabscience technology Co.,Ltd**



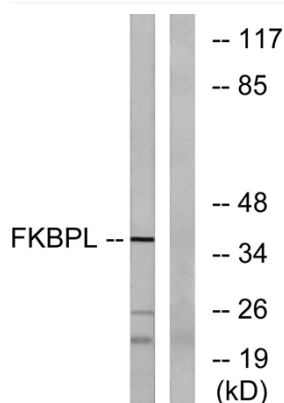
**matters needing attention**

Avoid repeated freezing and thawing!

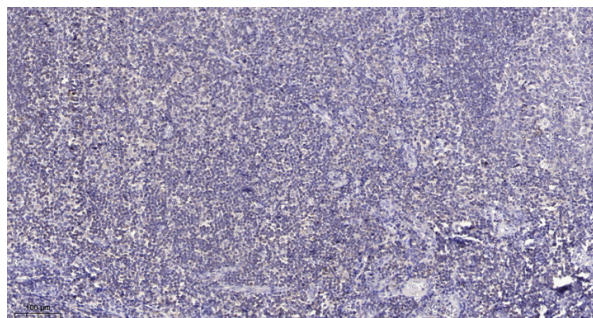
**Usage suggestions**

This product can be used in immunological reaction related experiments. For more information, please consult technical personnel.

## Products Images



Western blot analysis of lysates from Jurkat cells, using FKBPL Antibody. The lane on the right is blocked with the synthesized peptide.



Immunohistochemical analysis of paraffin-embedded human tonsil. 1, Antibody was diluted at 1:200(4° overnight). 2, Tris-EDTA,pH9.0 was used for antigen retrieval. 3,Secondary antibody was diluted at 1:200(room temperature, 30min).