



HLA-DOα Polyclonal Antibody

Catalog No	BYab-13929
Isotype	IgG
Reactivity	Human
Applications	WB;IHC;IF;ELISA
Gene Name	HLA-DOA
Protein Name	HLA class II histocompatibility antigen DO alpha chain
Immunogen	The antiserum was produced against synthesized peptide derived from human HLA-DOA. AA range:71-120
Specificity	HLA-DOα Polyclonal Antibody detects endogenous levels of HLA-DOα protein.
Formulation	Liquid in PBS containing 50% glycerol, 0.5% BSA and 0.02% sodium azide.
Source	Polyclonal, Rabbit,IgG
Purification	The antibody was affinity-purified from rabbit antiserum by affinity-chromatography using epitope-specific immunogen.
Dilution	WB: 1/500 - 1/2000. IHC: 1/100 - 1/300. ELISA: 1/40000.. IF 1:50-200
Concentration	1 mg/ml
Purity	≥90%
Storage Stability	-20°C/1 year
Synonyms	HLA-DOA; HLA-DNA; HLA-DZA; HLA class II histocompatibility antigen; DO alpha chain; MHC DN-alpha; MHC DZ alpha; MHC class II antigen DOA
Observed Band	34kD
Cell Pathway	Endosome membrane; Single-pass type I membrane protein. Lysosome membrane; Single-pass type I membrane protein. Complexes with HLA-DM molecule during intracellular transport and in endosomal/lysosomal compartments. Heterotetramerization is necessary to exit the ER.
Tissue Specificity	Lymph,
Function	function:Important modulator in the HLA class II restricted antigen presentation pathway by interaction with the HLA-DM molecule.,polymorphism:The only allele of DOA known is DOA*0101 which is shown here.,similarity:Belongs to the MHC class II family.,similarity:Contains 1 Ig-like C1-type (immunoglobulin-like) domain.,subunit:Heterodimer of an alpha chain (DOA) and a beta chain (DOB),.
Background	HLA-DOA belongs to the HLA class II alpha chain paralogues. HLA-DOA forms a heterodimer with HLA-DOB. The heterodimer, HLA-DO, is found in lysosomes in

Nanjing BYabscience technology Co.,Ltd



B cells and regulates HLA-DM-mediated peptide loading on MHC class II molecules. In comparison with classical HLA class II molecules, this gene exhibits very little sequence variation, especially at the protein level. [provided by RefSeq, Jul 2008],

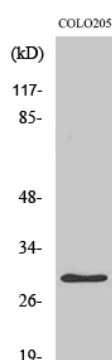
matters needing attention

Avoid repeated freezing and thawing!

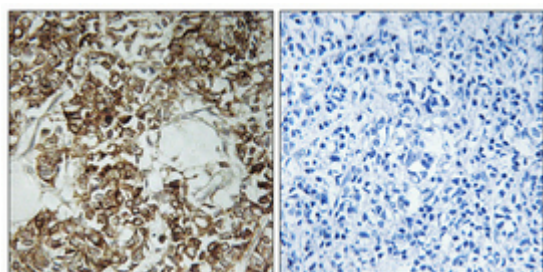
Usage suggestions

This product can be used in immunological reaction related experiments. For more information, please consult technical personnel.

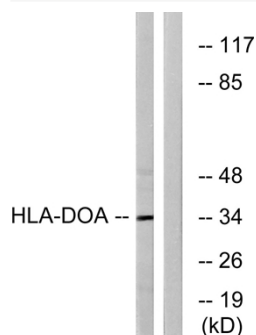
Products Images



Western Blot analysis of various cells using HLA-DOα Polyclonal Antibody



Immunohistochemical analysis of paraffin-embedded Human breast cancer. Antibody was diluted at 1:100 (4° overnight). High-pressure and temperature Tris-EDTA, pH 8.0 was used for antigen retrieval. Negative control (right) obtained from antibody was pre-absorbed by immunogen peptide.



Western blot analysis of lysates from COLO cells, using HLA-DOA Antibody. The lane on the right is blocked with the synthesized peptide.

Nanjing BYabscience technology Co.,Ltd

网址: www.njbybio.com

官方热线: 025-5229-8998

监督电话: 15950492658