



# IgG1 Polyclonal Antibody

Catalog No	BYab-13934
Isotype	IgG
Reactivity	Human;Rat;Mouse;
Applications	WB;IHC;IF;ELISA
Gene Name	IGHG1
Protein Name	Ig gamma-1 chain C region
Immunogen	The antiserum was produced against synthesized peptide derived from human IgG1. AA range:196-245
Specificity	IgG1 Polyclonal Antibody detects endogenous levels of IgG1 protein.
Formulation	Liquid in PBS containing 50% glycerol, 0.5% BSA and 0.02% sodium azide.
Source	Polyclonal, Rabbit,IgG
Purification	The antibody was affinity-purified from rabbit antiserum by affinity-chromatography using epitope-specific immunogen.
Dilution	WB: 1/500 - 1/2000. IHC: 1/100 - 1/300. ELISA: 1/40000.. IF 1:50-200
Concentration	1 mg/ml
Purity	≥90%
Storage Stability	-20°C/1 year
Synonyms	IGHG1; Ig gamma-1 chain C region
Observed Band	41kD
Cell Pathway	Secreted . Cell membrane .
Tissue Specificity	Dermoid tumor,Esophagus tumor,Glandular pool- thyro
Function	disease:Chromosomal aberrations involving IGHG1 may be a cause of multiple myeloma [MIM:254500]. Translocation t(11;14)(q13;q32) with CCND1; translocation t(4;14)(p16.3;q32.3) with FGFR3; translocation t(6;14)(p25;q32) with IRF4.;miscellaneous:Disease protein OMM may represent an allelic form or another gamma chain subclass.;miscellaneous:Disease protein WIS is lacking most of the V region and all of the CH1 region.;miscellaneous:Disease protein ZUC lack most of the V region, all of the CH1 region, and part of the hinge compared with normal gamma-3 heavy chains.;miscellaneous:EU also differs in the amidation states of residues 155, 166, 177, 195, 198, 269, and 272 and in the order of residues 268-272.;miscellaneous:KOL also differs in the amidation states of residues 198, 267 and 272.;miscellaneous:Nie also differs in the amidation

Nanjing BYabscience technology Co.,Ltd



states of 35, 116, 198, 269 and 272.,miscellaneous:Nie h

### Background

disease:Chromosomal aberrations involving IGHG1 may be a cause of multiple myeloma [MIM:254500]. Translocation t(11;14)(q13;q32) with CCND1; translocation t(4;14)(p16.3;q32.3) with FGFR3; translocation t(6;14)(p25;q32) with IRF4.,miscellaneous:Disease protein OMM may represent an allelic form or another gamma chain subclass.,miscellaneous:Disease protein WIS is lacking most of the V region and all of the CH1 region.,miscellaneous:Disease protein ZUC lack most of the V region, all of the CH1 region, and part of the hinge compared with normal gamma-3 heavy chains.,miscellaneous:EU also differs in the amidation states of residues 155, 166, 177, 195, 198, 269, and 272 and in the order of residues 268-272.,miscellaneous:KOL also differs in the amidation states of residues 198, 267 and 272.,miscellaneous:Nie also differs in the amidation states of 35, 116, 198, 269 and 272.,miscellaneous:Nie has the G1M(17) allotypic marker, 97-K, and the G1M(1) markers, 239-D and 241-L. KOL and EU sequences have the G1M(3) marker and the G1M (non-1) markers.,miscellaneous:The hinge region in gamma-3 chains is about four times as long as in other gamma chains and contains three identical 15-residue segments preceded by a similar 17-residue segment (12-28).,online information:IGHM mutation db,polymorphism:All 4 combinations of the S/G and V/G polymorphisms at positions 191 and 216 have been observed in human mu chains.,subcellular location:During differentiation, B-lymphocytes switch from expression of membrane-bound IgM to secretion of IgM.,subunit:Dimer linked by 12 disulfide bonds; it has an extra interchain disulfide bond at position 7 in addition to the 11 normally present in the hinge region.,

### matters needing attention

Avoid repeated freezing and thawing!

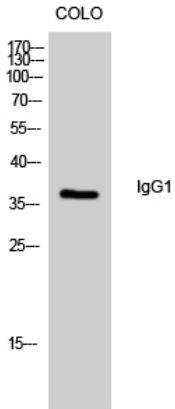
### Usage suggestions

This product can be used in immunological reaction related experiments. For more information, please consult technical personnel.

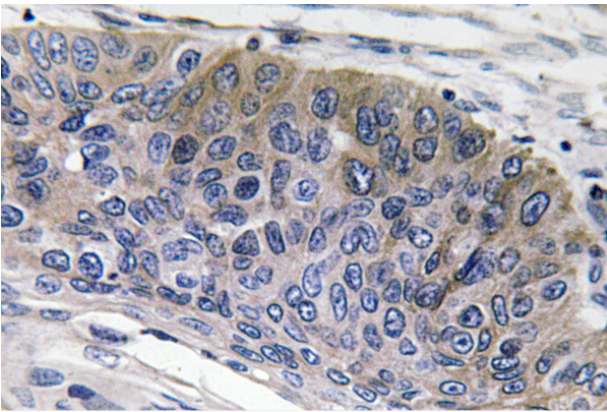
Nanjing BYabscience technology Co.,Ltd



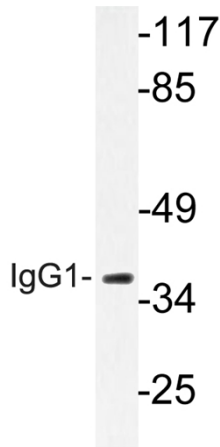
## Products Images



Western Blot analysis of colo cells using IgG1 Polyclonal Antibody diluted at 1:500



Immunohistochemistry analysis of IgG1 antibody in paraffin-embedded human lung carcinoma tissue.



Western blot analysis of lysate from LOVO cells, using IgG1 antibody.