



LSP1 Polyclonal Antibody

Catalog No	BYab-13943
Isotype	IgG
Reactivity	Human;Rat;Mouse;
Applications	WB;ELISA
Gene Name	LSP1
Protein Name	Lymphocyte-specific protein 1
Immunogen	The antiserum was produced against synthesized peptide derived from human LSP1. AA range:104-153
Specificity	LSP1 Polyclonal Antibody detects endogenous levels of LSP1 protein.
Formulation	Liquid in PBS containing 50% glycerol, 0.5% BSA and 0.02% sodium azide.
Source	Polyclonal, Rabbit,IgG
Purification	The antibody was affinity-purified from rabbit antiserum by affinity-chromatography using epitope-specific immunogen.
Dilution	Western Blot: 1/500 - 1/2000. ELISA: 1/5000. Not yet tested in other applications.
Concentration	1 mg/ml
Purity	≥90%
Storage Stability	-20°C/1 year
Synonyms	LSP1; WP34; Lymphocyte-specific protein 1; 47 kDa actin-binding protein; 52 kDa phosphoprotein; pp52; Lymphocyte-specific antigen WP34
Observed Band	37kD
Cell Pathway	Cell membrane; Peripheral membrane protein; Cytoplasmic side.
Tissue Specificity	Activated T-lymphocytes.
Function	function:May play a role in mediating neutrophil activation and chemotaxis.,PTM:Phosphorylated by casein kinase II, protein kinase C and MAPKAPK2. Phosphorylation by PKC induces translocation from membrane to cytoplasm. Phosphorylation by MAPKAPK2 may regulate neutrophil chemotaxis.,subunit:Binds actin.,tissue specificity:Activated T-lymphocytes.,
Background	This gene encodes an intracellular F-actin binding protein. The protein is expressed in lymphocytes, neutrophils, macrophages, and endothelium and may regulate neutrophil motility, adhesion to fibrinogen matrix proteins, and transendothelial migration. Alternative splicing results in multiple transcript variants encoding different isoforms. [provided by RefSeq, Jul 2008],

Nanjing BYabscience technology Co.,Ltd



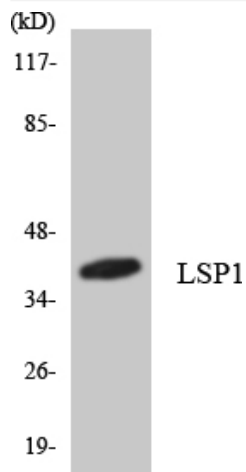
matters needing attention

Avoid repeated freezing and thawing!

Usage suggestions

This product can be used in immunological reaction related experiments. For more information, please consult technical personnel.

Products Images



Western blot analysis of the lysates from Jurkat cells using LSP1 antibody.