



CD307 Polyclonal Antibody

Catalog No	BYab-14000
Isotype	IgG
Reactivity	Human;Rat;Mouse;
Applications	WB;IHC;IF;ELISA
Gene Name	FCRL5
Protein Name	Fc receptor-like protein 5
Immunogen	The antiserum was produced against synthesized peptide derived from the Internal region of human FCRL5. AA range:191-240
Specificity	CD307 Polyclonal Antibody detects endogenous levels of CD307 protein.
Formulation	Liquid in PBS containing 50% glycerol, 0.5% BSA and 0.02% sodium azide.
Source	Polyclonal, Rabbit,IgG
Purification	The antibody was affinity-purified from rabbit antiserum by affinity-chromatography using epitope-specific immunogen.
Dilution	WB: 1/500 - 1/2000. IHC-p: 1:100-300 ELISA: 1/20000.. IF 1:50-200
Concentration	1 mg/ml
Purity	≥90%
Storage Stability	-20°C/1 year
Synonyms	FCRL5; FCRH5; IRTA2; Fc receptor-like protein 5; FcR-like protein 5; FcRL5; BXMAS1; Fc receptor homolog 5; FcRH5; Immune receptor translocation-associated protein 2; CD307e
Observed Band	110kD
Cell Pathway	Cell membrane ; Single-pass type I membrane protein .
Tissue Specificity	Expressed in marginal zone B-cells, immunoblasts, tonsillar germinal center centrocytes and in the intraepithelial and interfollicular regions of the tonsil. Expressed in many lymphoma cell lines and on hairy cell leukemia cells. Isoform 1, isoform 3, isoform 4 and isoform 5 are detected in lymph node, spleen, bone marrow, and small intestine with preponderance of isoform 3. Expressed in mature and memory B-cells and down-regulated in germinal center cells (at protein level).
Function	disease:A chromosomal aberration involving FCRL5 is found in Burkitt lymphoma (BL) cell lines with 1q21 abnormalities [MIM:113970]. Duplication dup(1)(q21q32).,domain:Contains 2 copies of a cytoplasmic motif that is referred to as the immunoreceptor tyrosine-based inhibitor motif (ITIM).,function:May be

Nanjing BYabscience technology Co.,Ltd



involved in B-cell development and differentiation in peripheral lymphoid organs and may be useful markers of B-cell stages. May have an immunoregulatory role in marginal zone B-cells.,similarity:Contains 8 Ig-like C2-type (immunoglobulin-like) domains.,tissue specificity:Expressed in marginal zone B-cells, immunoblasts, tonsillar germinal center centrocytes and in the intraepithelial and interfollicular regions of the tonsil. Expressed in many lymphoma cell lines and on hairy cell leukemia cells. Isoform 1, isoform 3, isoform 4 and isoform 5 are detected in lymph node, spleen, bone marrow

Background

This gene encodes a member of the immunoglobulin receptor superfamily and the Fc-receptor like family. This gene and several other Fc receptor-like gene members are clustered on the long arm of chromosome 1. The encoded protein is a single-pass type I membrane protein and contains 8 immunoglobulin-like C2-type domains. This gene is implicated in B cell development and lymphomagenesis. Alternatively spliced transcript variants encoding different isoforms have been identified. [provided by RefSeq, Sep 2010],

matters needing attention

Avoid repeated freezing and thawing!

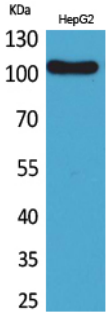
Usage suggestions

This product can be used in immunological reaction related experiments. For more information, please consult technical personnel.

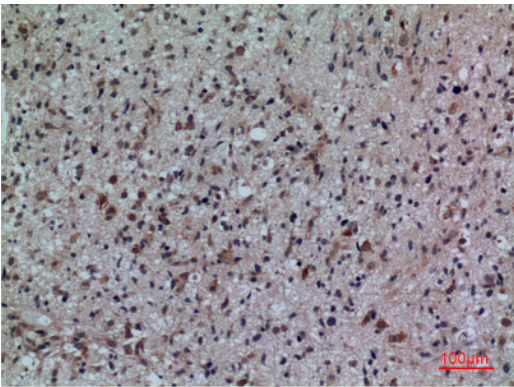
Nanjing BYabscience technology Co.,Ltd



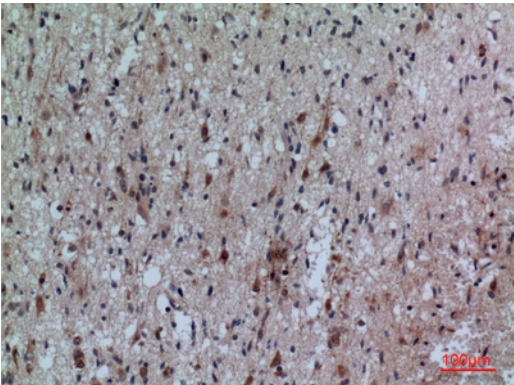
Products Images



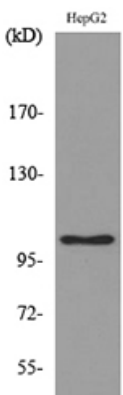
Western Blot analysis of HepG2 cells using CD307 Polyclonal Antibody. Secondary antibody(catalog#:RS0002) was diluted at 1:20000



Immunohistochemical analysis of paraffin-embedded human-brain, antibody was diluted at 1:100



Immunohistochemical analysis of paraffin-embedded human-brain, antibody was diluted at 1:100



Western blot analysis of lysate from HepG2 cells, using FCRL5 Antibody.

Nanjing BYabs science technology Co.,Ltd

网址: www.njbybio.com

官方热线: 025-5229-8998

监督电话: 15950492658