



CD232 Polyclonal Antibody

Catalog No	BYab-14073
Isotype	IgG
Reactivity	Human;Mouse;Rat
Applications	WB;ELISA
Gene Name	PLXNC1
Protein Name	Plexin-C1
Immunogen	The antiserum was produced against synthesized peptide derived from the Internal region of human PLXNC1. AA range:811-860
Specificity	CD232 Polyclonal Antibody detects endogenous levels of CD232 protein.
Formulation	Liquid in PBS containing 50% glycerol, 0.5% BSA and 0.02% sodium azide.
Source	Polyclonal, Rabbit,IgG
Purification	The antibody was affinity-purified from rabbit antiserum by affinity-chromatography using epitope-specific immunogen.
Dilution	Western Blot: 1/500 - 1/2000. ELISA: 1/10000. Not yet tested in other applications.
Concentration	1 mg/ml
Purity	≥90%
Storage Stability	-20°C/1 year
Synonyms	PLXNC1; VESPR; Plexin-C1; Virus-encoded semaphorin protein receptor; CD232
Observed Band	175kD
Cell Pathway	Membrane ; Single-pass type I membrane protein .
Tissue Specificity	Detected in heart, brain, lung, spleen and placenta.
Function	function:Receptor for vaccinia virus semaphorin A39R and for herpesvirus Sema protein. Binding of viral semaphorins triggers cellular responses leading to the rearrangement of the cytoskeleton and to secretion of IL6 and IL8.,PTM:N-glycosylated.,similarity:Belongs to the plexin family.,similarity:Contains 1 Sema domain.,tissue specificity:Detected in heart, brain, lung, spleen and placenta.,
Background	This gene encodes a member of the plexin family. Plexins are transmembrane receptors for semaphorins, a large family of proteins that regulate axon guidance, cell motility and migration, and the immune response. The encoded protein and its ligand regulate melanocyte adhesion, and viral semaphorins may modulate the

Nanjing BYabs science technology Co.,Ltd



immune response by binding to this receptor. The encoded protein may be a tumor suppressor protein for melanoma. Alternatively spliced transcript variants have been observed for this gene. [provided by RefSeq, Jan 2011],

matters needing attention

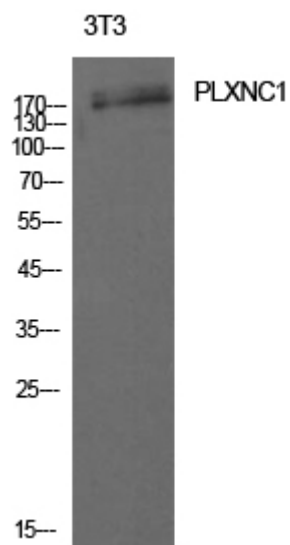
Avoid repeated freezing and thawing!

Usage suggestions

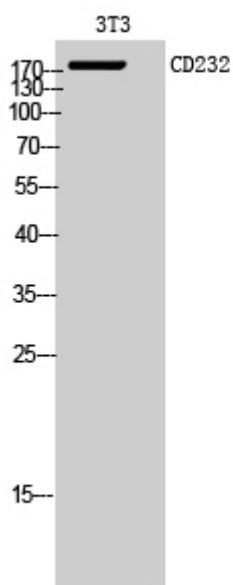
This product can be used in immunological reaction related experiments. For more information, please consult technical personnel.



Products Images



Western Blot analysis of 3T3 cells using CD232 Polyclonal Antibody. Antibody was diluted at 1:1000. Secondary antibody(catalog#:RS0002) was diluted at 1:20000



Western Blot analysis of 3T3 cells using CD232 Polyclonal Antibody diluted at 1:1000. Secondary antibody(catalog#:RS0002) was diluted at 1:20000