



CD155 Polyclonal Antibody

| | |
|--------------------|---|
| Catalog No | BYab-14074 |
| Isotype | IgG |
| Reactivity | Human;Mouse;Rat |
| Applications | WB IF;ELISA |
| Gene Name | PVR |
| Protein Name | Poliovirus receptor |
| Immunogen | The antiserum was produced against synthesized peptide derived from the Internal region of human PVR. AA range:81-130 |
| Specificity | CD155 Polyclonal Antibody detects endogenous levels of CD155 protein. |
| Formulation | Liquid in PBS containing 50% glycerol, 0.5% BSA and 0.02% sodium azide. |
| Source | Polyclonal, Rabbit,IgG |
| Purification | The antibody was affinity-purified from rabbit antiserum by affinity-chromatography using epitope-specific immunogen. |
| Dilution | WB 1:500-2000 IF 1:100-300 ELISA 1:5000-20000 Not yet tested in other applications. |
| Concentration | 1 mg/ml |
| Purity | ≥90% |
| Storage Stability | -20°C/1 year |
| Synonyms | PVR; PVS; Poliovirus receptor; Nectin-like protein 5; NECL-5; CD155 |
| Observed Band | 70kD |
| Cell Pathway | [Isoform Alpha]: Cell membrane; Single-pass type I membrane protein.; [Isoform Delta]: Cell membrane; Single-pass type I membrane protein.; [Isoform Beta]: Secreted.; [Isoform Gamma]: Secreted. |
| Tissue Specificity | Liver,Pancreas,Placenta,Plasma, |
| Function | function:Mediates NK cell adhesion and triggers NK cell effector functions. Binds two different NK cell receptors: CD96 and CD226. These interactions accumulates at the cell-cell contact site, leading to the formation of a mature immunological synapse between NK cell and target cell. This may trigger adhesion and secretion of lytic granules and IFN-gamma and activate cytotoxicity of activated NK cells. May also promote NK cell-target cell modular exchange, and PVR transfer to the NK cell. This transfer is more important in some tumor cells expressing a lot of PVR, and may trigger fratricide NK cell activation, providing tumors with a mechanism of immunoevasion. Plays a role in mediating tumor cell invasion and migration. Serves as a receptor for poliovirus attachment to target |

Nanjing BYabscience technology Co.,Ltd



cells. May play a role in axonal transport of poliovirus, by targeting virion-PVR-containing endocytic vesicles to

Background

The protein encoded by this gene is a transmembrane glycoprotein belonging to the immunoglobulin superfamily. The external domain mediates cell attachment to the extracellular matrix molecule vitronectin, while its intracellular domain interacts with the dynein light chain Tctex-1/DYNLT1. The gene is specific to the primate lineage, and serves as a cellular receptor for poliovirus in the first step of poliovirus replication. Multiple transcript variants encoding different isoforms have been found for this gene. [provided by RefSeq, Oct 2008],

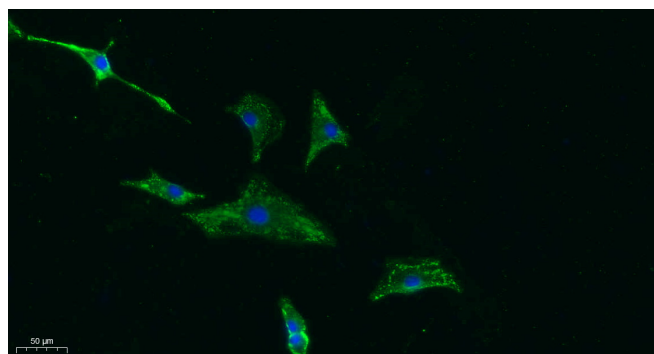
matters needing attention

Avoid repeated freezing and thawing!

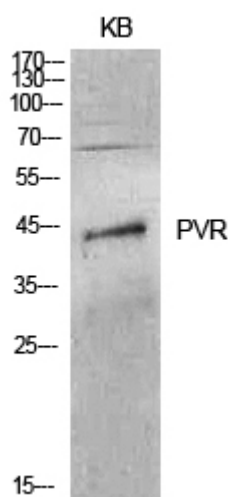
Usage suggestions

This product can be used in immunological reaction related experiments. For more information, please consult technical personnel.

Products Images



Immunofluorescence analysis of A549. 1, primary Antibody was diluted at 1:200(4°C overnight). 2, Goat Anti Rabbit IgG (H&L) - Alexa Fluor 488 Secondary antibody was diluted at 1:1000(room temperature, 50min).3, Picture B: DAPI(blue) 10min.



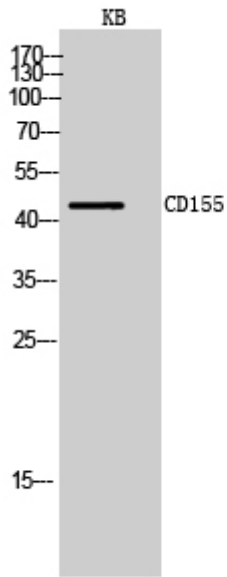
Western Blot analysis of KB cells using CD155 Polyclonal Antibody. Secondary antibody(catalog#:RS0002) was diluted at 1:20000

Nanjing BYabs science technology Co.,Ltd

网址: www.njbybio.com

官方热线: 025-5229-8998

监督电话: 15950492658



Western Blot analysis of KB cells using CD155
Polyclonal Antibody. Secondary
antibody(catalog#:RS0002) was diluted at 1:20000