



C7 Polyclonal Antibody

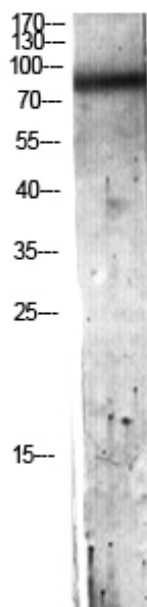
Catalog No	BYab-14089
Isotype	IgG
Reactivity	Human;Rat;Mouse;
Applications	WB;IHC;IF;ELISA
Gene Name	C7
Protein Name	Complement component C7
Immunogen	The antiserum was produced against synthesized peptide derived from the N-terminal region of human C7. AA range:100-150
Specificity	C7 Polyclonal Antibody detects endogenous levels of C7 protein.
Formulation	Liquid in PBS containing 50% glycerol, 0.5% BSA and 0.02% sodium azide.
Source	Polyclonal, Rabbit,IgG
Purification	The antibody was affinity-purified from rabbit antiserum by affinity-chromatography using epitope-specific immunogen.
Dilution	WB: 1/500 - 1/2000. IHC-p: 1:100-1:300. ELISA: 1/10000.. IF 1:50-200
Concentration	1 mg/ml
Purity	≥90%
Storage Stability	-20°C/1 year
Synonyms	C7; Complement component C7
Observed Band	93kD
Cell Pathway	Secreted.
Tissue Specificity	Liver,Placenta,Plasma,PNS,
Function	disease:Defects in C7 are a cause of component C7 deficiency (C7D) [MIM:217070]. Patients with C7D suffer from recurrent bacterial infections, predominantly from Neisseria meningitidis.,function:C7 is a constituent of the membrane attack complex. C7 binds to C5b forming the C5b-7 complex, where it serves as a membrane anchor.,online information:C7 mutation db,PTM:C7 has 28 disulfide bridges.,similarity:Belongs to the complement C6/C7/C8/C9 family.,similarity:Contains 1 EGF-like domain.,similarity:Contains 1 LDL-receptor class A domain.,similarity:Contains 1 MACPF domain.,similarity:Contains 2 Sushi (CCP/SCR) domains.,similarity:Contains 2 TSP type-1 domains.,subunit:Monomer or dimer; as a C5b-7 complex it can also form multimeric rosettes.,

Nanjing BYabscience technology Co.,Ltd

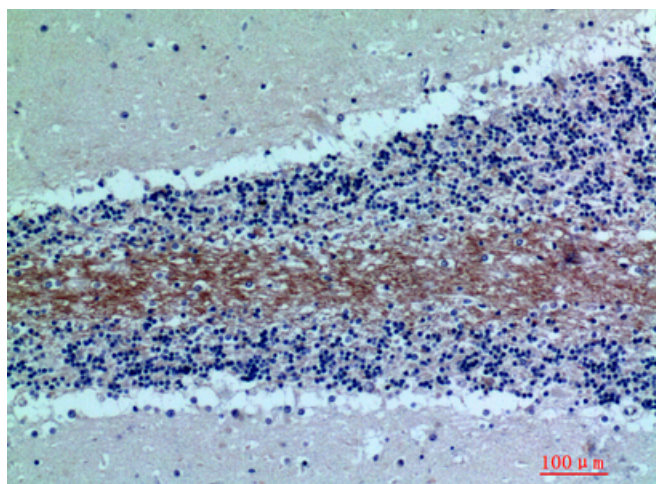


Background	C7 is a component of the complement system. It participates in the formation of Membrane Attack Complex (MAC). People with C7 deficiency are prone to bacterial infection. [provided by RefSeq, Jul 2008],
matters needing attention	Avoid repeated freezing and thawing!
Usage suggestions	This product can be used in immunological reaction related experiments. For more information, please consult technical personnel.

Products Images



Western blot analysis of HeLa lysis using C7 antibody. Antibody was diluted at 1:500. Secondary antibody(catalog#:RS0002) was diluted at 1:20000



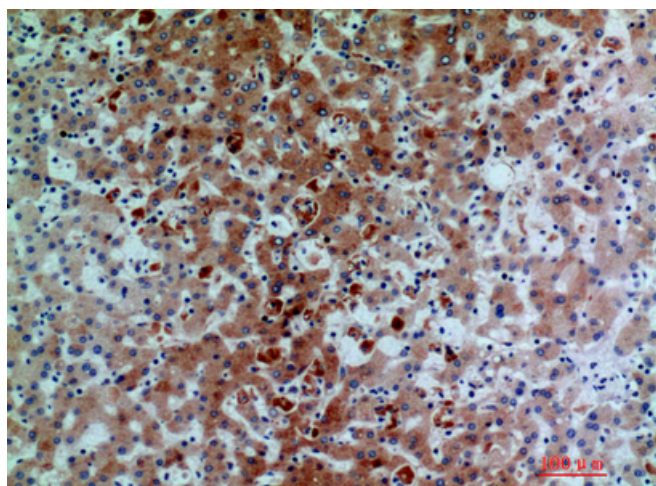
Immunohistochemical analysis of paraffin-embedded human-brain, antibody was diluted at 1:200

Nanjing BYabscience technology Co.,Ltd

网址: www.njbybio.com

官方热线: 025-5229-8998

监督电话: 15950492658



Immunohistochemical analysis of paraffin-embedded human-liver, antibody was diluted at 1:200