



BEST2 Polyclonal Antibody

Catalog No	BYab-14284
Isotype	IgG
Reactivity	Mouse;Rat
Applications	WB;IHC;IF
Gene Name	BEST2
Protein Name	Bestrophin-2
Immunogen	Synthetic Peptide of BEST2
Specificity	The antibody detects endogenous BEST2 protein.
Formulation	PBS, pH 7.4, containing 0.5%BSA, 0.02% sodium azide as Preservative and 50% Glycerol.
Source	Polyclonal, Rabbit,IgG
Purification	The antibody was affinity-purified from rabbit antiserum by affinity-chromatography using epitope-specific immunogen.
Dilution	WB: 1:500-1000 IHC: 1:200-500. IF 1:50-200
Concentration	1 mg/ml
Purity	≥90%
Storage Stability	-20°C/1 year
Synonyms	Bestrophin-2; Vitelliform macular dystrophy 2-like protein 1
Observed Band	50kD
Cell Pathway	Cell membrane; Multi-pass membrane protein.
Tissue Specificity	Mainly confined to the retinal pigment epithelium and colon.
Function	function:Forms calcium-sensitive chloride channels. May conduct other physiologically significant anions such as bicarbonate.,similarity:Belongs to the bestrophin family.,tissue specificity:Mainly confined to the retinal pigment epithelium and colon.,
Background	This gene is a member of the bestrophin gene family of anion channels. Bestrophin genes share a similar gene structure with highly conserved exon-intron boundaries, but with distinct 3' ends. Bestrophins are transmembrane proteins that contain a homologous region rich in aromatic residues, including an invariant arg-phe-pro motif. Mutation in one of the family members (bestrophin 1) is associated with vitelliform macular dystrophy. The bestrophin 2 gene is mainly

Nanjing BYabscience technology Co.,Ltd



expressed in the retinal pigment epithelium and colon. [provided by RefSeq, Jul 2008],

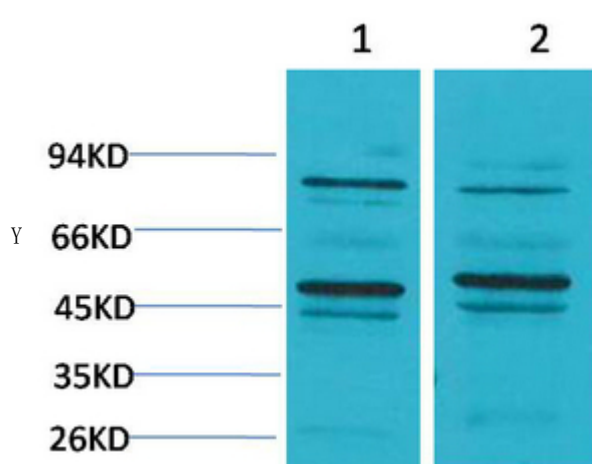
matters needing attention

Avoid repeated freezing and thawing!

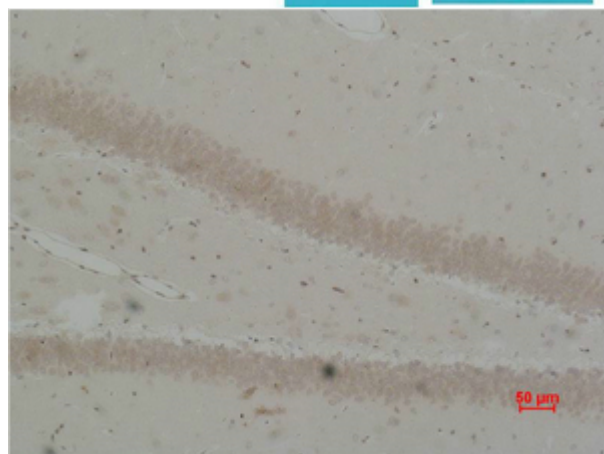
Usage suggestions

This product can be used in immunological reaction related experiments. For more information, please consult technical personnel.

Products Images



Western blot analysis of 1) Mouse Brain Tissue, 2) Rat Brain Tissue using BEST2 Polyclonal Antibody. Secondary antibody(catalog#:RS0002) was diluted at 1:20000



Immunohistochemical analysis of paraffin-embedded Rat Brain Tissue using BEST2 Polyclonal Antibody.

Nanjing BYabscience technology Co.,Ltd

网址: www.njbybio.com

官方热线: 025-5229-8998

监督电话: 15950492658