



Krs-1/2 (phospho Thr183) Polyclonal Antibody

Catalog No	BYab-14462
Isotype	IgG
Reactivity	Human;Mouse
Applications	WB;IHC;IF;ELISA
Gene Name	STK3/STK4
Protein Name	Serine/threonine-protein kinase 3/4
Immunogen	The antiserum was produced against synthesized peptide derived from human Mst1/2 around the phosphorylation site of Thr183. AA range:149-198
Specificity	Phospho-Krs-1/2 (T183) Polyclonal Antibody detects endogenous levels of Krs-1/2 protein only when phosphorylated at T183.
Formulation	Liquid in PBS containing 50% glycerol, 0.5% BSA and 0.02% sodium azide.
Source	Polyclonal, Rabbit,IgG
Purification	The antibody was affinity-purified from rabbit antiserum by affinity-chromatography using epitope-specific immunogen.
Dilution	WB: 1/500 - 1/2000. IHC: 1/100 - 1/300. ELISA: 1/40000.. IF 1:50-200
Concentration	1 mg/ml
Purity	≥90%
Storage Stability	-20°C/1 year
Synonyms	STK3; KRS1; MST2; Serine/threonine-protein kinase 3; Mammalian STE20-like protein kinase 2; MST-2; STE20-like kinase MST2; Serine/threonine-protein kinase Krs-1; STK4; KRS2; MST1; Serine/threonine-protein kinase 4; Mammalian STE20-like prot
Observed Band	60kD
Cell Pathway	Cytoplasm . Nucleus . The caspase-cleaved form cycles between nucleus and cytoplasm (PubMed:19525978, PubMed:11278283). Phosphorylation at Thr-117 leads to inhibition of nuclear translocation (PubMed:19525978). .
Tissue Specificity	Expressed at high levels in adult kidney, skeletal and placenta tissues and at very low levels in adult heart, lung and brain tissues.
Function	catalytic activity:ATP + a protein = ADP + a phosphoprotein.,cofactor:Magnesium.,enzyme regulation:Inhibited by the C-terminal non-catalytic region. Activated by caspase-cleavage. Full activation also requires homodimerization and autophosphorylation of Thr-180, which are inhibited by the proto-oncogene product RAF1.,function:Stress-activated, pro-apoptotic kinase which, following caspase-cleavage, enters the nucleus and

Nanjing BYabscience technology Co.,Ltd



	induces chromatin condensation followed by internucleosomal DNA fragmentation. Phosphorylates NKX2-1 (By similarity). Phosphorylates and activates LATS1 and LATS2.,similarity:Belongs to the protein kinase superfamily. STE Ser/Thr protein kinase family. STE20 subfamily.,similarity:Contains 1 protein kinase domain.,similarity:Contains 1 SARAH domain.,subcellular location:The caspase-cleaved form cycles between nucleus and cytoplasm.,subunit:Homodimer; mediated via the coil
Background	serine/threonine kinase 3(STK3) Homo sapiens This gene encodes a serine/threonine protein kinase activated by proapoptotic molecules indicating the encoded protein functions as a growth suppressor. Cleavage of the protein product by caspase removes the inhibitory C-terminal portion. The N-terminal portion is transported to the nucleus where it homodimerizes to form the active kinase which promotes the condensation of chromatin during apoptosis. Multiple transcript variants encoding different isoforms have been found for this gene. [provided by RefSeq, Jan 2012],
matters needing attention	Avoid repeated freezing and thawing!
Usage suggestions	This product can be used in immunological reaction related experiments. For more information, please consult technical personnel.

Nanjing BYabscience technology Co.,Ltd

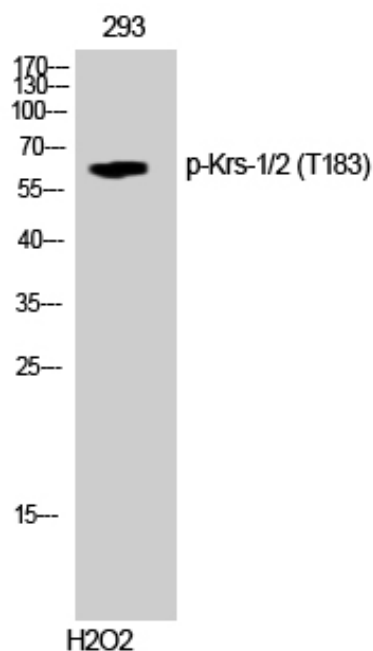
网址: www.njbybio.com

官方热线: 025-5229-8998

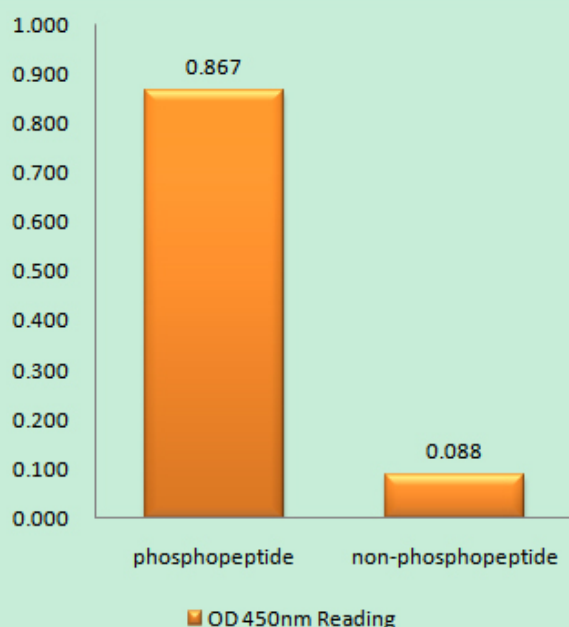
监督电话: 15950492658



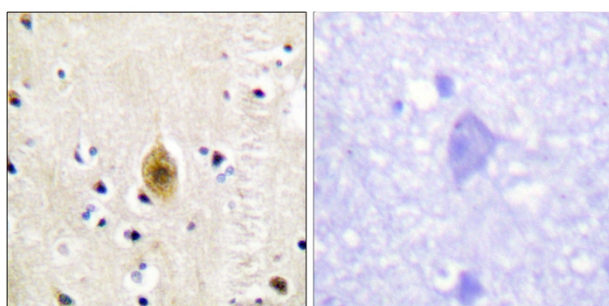
Products Images



Western Blot analysis of 293 cells using
Phospho-Krs-1/2 (T183) Polyclonal Antibody

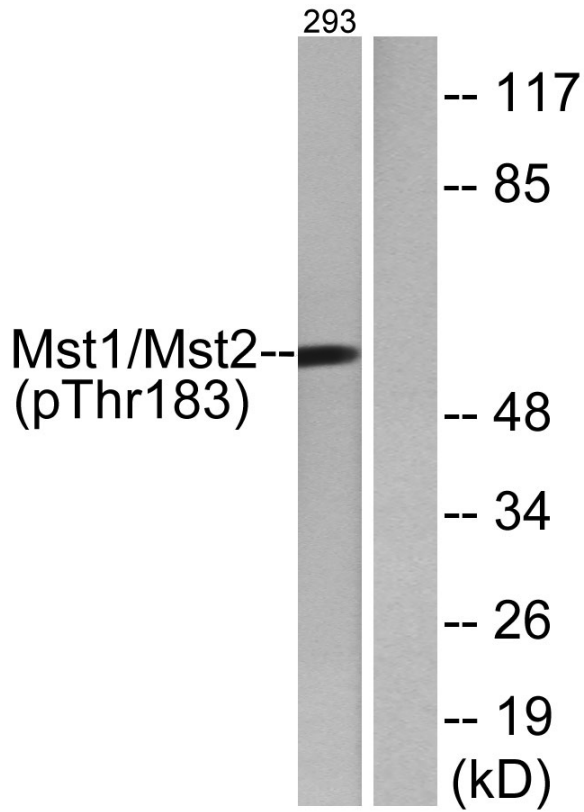


Enzyme-Linked Immunosorbent Assay
(Phospho-ELISA) for Immunogen Phosphopeptide
(Phospho-left) and Non-Phosphopeptide
(Phospho-right), using Mst1/2 (Phospho-Thr183)
Antibody



Immunohistochemistry analysis of paraffin-embedded
human brain, using Mst1/2 (Phospho-Thr183)
Antibody. The picture on the right is blocked with the
phospho peptide.

Nanjing BYabscience technology Co.,Ltd



Western blot analysis of lysates from 293 cells treated with H₂O₂ 100uM 15', using Mst1/2 (Phospho-Thr183) Antibody. The lane on the right is blocked with the phospho peptide.