



MARK1/2/3/4 (phospho Thr215) Polyclonal Antibody

Catalog No	BYab-14533
Isotype	IgG
Reactivity	Human;Mouse;Rat
Applications	IHC;IF;ELISA
Gene Name	MARK1/2/3/4
Protein Name	Serine/threonine-protein kinase MARK1/2/3/4
Immunogen	The antiserum was produced against synthesized peptide derived from human MARK1/2/3/4 around the phosphorylation site of Thr215. AA range:181-230
Specificity	Phospho-MARK1/2/3/4 (T215) Polyclonal Antibody detects endogenous levels of MARK1/2/3/4 protein only when phosphorylated at T215.
Formulation	Liquid in PBS containing 50% glycerol, 0.5% BSA and 0.02% sodium azide.
Source	Polyclonal, Rabbit,IgG
Purification	The antibody was affinity-purified from rabbit antiserum by affinity-chromatography using epitope-specific immunogen.
Dilution	IHC: 1/100 - 1/300. ELISA: 1/5000.. IF 1:50-200
Concentration	1 mg/ml
Purity	≥90%
Storage Stability	-20°C/1 year
Synonyms	MARK1; KIAA1477; MARK; Serine/threonine-protein kinase MARK1; MAP/microtubule affinity-regulating kinase 1; PAR1 homolog c; Par-1c; Par1c; MARK2; EMK1; Serine/threonine-protein kinase MARK2; ELKL motif kinase 1; EMK-1; MAP/microtubule affin
Observed Band	
Cell Pathway	Cell membrane ; Peripheral membrane protein . Cytoplasm, cytoskeleton . Cytoplasm . Cell projection, dendrite . Appears to localize to an intracellular network. .
Tissue Specificity	Highly expressed in heart, skeletal muscle, brain, fetal brain and fetal kidney.
Function	catalytic activity:ATP + a protein = ADP + a phosphoprotein.,cofactor:Magnesium.,enzyme regulation:Activated by phosphorylation on Thr-215 by STK11 in complex with STE20-related adapter-alpha (STRAD alpha) pseudo kinase and CAB39.,function:May play a role in cytoskeletal stability.,similarity:Belongs to the protein kinase superfamily. CAMK Ser/Thr protein kinase family. MARK subfamily.,similarity:Contains 1 KA1

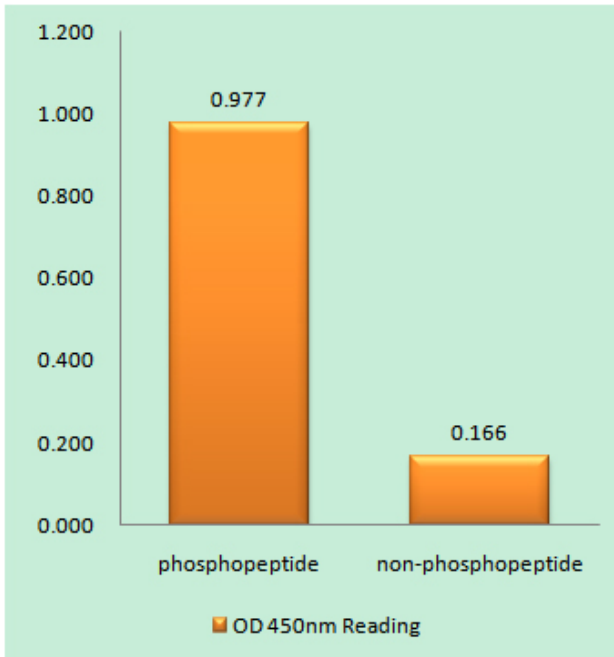
Nanjing BYabscience technology Co.,Ltd



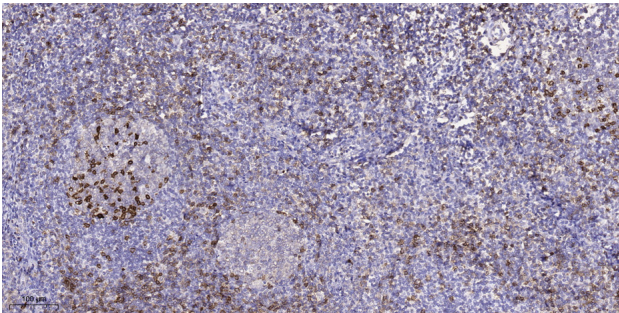
	(kinase-associated) domain.,similarity:Contains 1 protein kinase domain.,similarity:Contains 1 UBA domain.,subcellular location:Appears to localize to an intracellular network.,tissue specificity:Highly expressed in heart, skeletal muscle, brain, fetal brain and fetal kidney.,
Background	catalytic activity:ATP + a protein = ADP + a phosphoprotein.,cofactor:Magnesium.,enzyme regulation:Activated by phosphorylation on Thr-215 by STK11 in complex with STE20-related adapter-alpha (STRAD alpha) pseudo kinase and CAB39.,function:May play a role in cytoskeletal stability.,similarity:Belongs to the protein kinase superfamily. CAMK Ser/Thr protein kinase family. MARK subfamily.,similarity:Contains 1 KA1 (kinase-associated) domain.,similarity:Contains 1 protein kinase domain.,similarity:Contains 1 UBA domain.,subcellular location:Appears to localize to an intracellular network.,tissue specificity:Highly expressed in heart, skeletal muscle, brain, fetal brain and fetal kidney.,
matters needing attention	Avoid repeated freezing and thawing!
Usage suggestions	This product can be used in immunological reaction related experiments. For more information, please consult technical personnel.



Products Images



Enzyme-Linked Immunosorbent Assay (Phospho-ELISA) for Immunogen Phosphopeptide (Phospho-left) and Non-Phosphopeptide (Phospho-right), using MARK1/2/3/4 (Phospho-Thr215) Antibody



Immunohistochemical analysis of paraffin-embedded human tonsil. 1, Antibody was diluted at 1:200(4° overnight). 2, Tris-EDTA,pH9.0 was used for antigen retrieval. 3,Secondary antibody was diluted at 1:200(room temperature, 45min).

Nanjing BYabscience technology Co.,Ltd

网址: www.njbybio.com

官方热线: 025-5229-8998

监督电话: 15950492658