



ILK (phospho Ser246) Polyclonal Antibody

Catalog No	BYab-14546
Isotype	IgG
Reactivity	Human;Mouse;Rat
Applications	IHC;IF;ELISA
Gene Name	ILK
Protein Name	Integrin-linked protein kinase
Immunogen	The antiserum was produced against synthesized peptide derived from human ILK around the phosphorylation site of Ser246. AA range:212-261
Specificity	Phospho-ILK (S246) Polyclonal Antibody detects endogenous levels of ILK protein only when phosphorylated at S246.
Formulation	Liquid in PBS containing 50% glycerol, 0.5% BSA and 0.02% sodium azide.
Source	Polyclonal, Rabbit,IgG
Purification	The antibody was affinity-purified from rabbit antiserum by affinity-chromatography using epitope-specific immunogen.
Dilution	IHC: 1/100 - 1/300. ELISA: 1/5000.. IF 1:50-200
Concentration	1 mg/ml
Purity	≥90%
Storage Stability	-20°C/1 year
Synonyms	ILK; ILK1; ILK2; Integrin-linked protein kinase; 59 kDa serine/threonine-protein kinase; ILK-1; ILK-2; p59ILK
Observed Band	
Cell Pathway	Cell junction, focal adhesion . Cell membrane; Peripheral membrane protein; Cytoplasmic side . Cell projection, lamellipodium . Cytoplasm, myofibril, sarcomere .
Tissue Specificity	Highly expressed in heart followed by skeletal muscle, pancreas and kidney. Weakly expressed in placenta, lung and liver.
Function	catalytic activity:ATP + a protein = ADP + a phosphoprotein..domain:A PH-like domain is involved in phosphatidylinositol phosphate binding..enzyme regulation:Stimulated rapidly but transiently by both cell fibronectin interactions, as well as by insulin, in a PI3-K-dependent manner, likely via the binding of PtdIns(3,4,5)P3 with a PH-like domain of ILK..function:Receptor-proximal protein kinase regulating integrin-mediated signal transduction. May act as a mediator of inside-out integrin signaling. Focal adhesion protein part of the complex ILK-PINCH. This complex is considered to be one of the convergence points of integrin- and growth factor-signaling pathway. Could be implicated in mediating

Nanjing BYabscience technology Co.,Ltd



cell architecture, adhesion to integrin substrates and anchorage-dependent growth in epithelial cells. Phosphorylates beta-1 and beta-3 integrin subunit on serine and threonine residues, but also

Background

This gene encodes a protein with a kinase-like domain and four ankyrin-like repeats. The encoded protein associates at the cell membrane with the cytoplasmic domain of beta integrins, where it regulates integrin-mediated signal transduction. Activity of this protein is important in the epithelial to mesenchymal transition, and over-expression of this gene is implicated in tumor growth and metastasis. Alternative splicing results in multiple transcript variants. [provided by RefSeq, Jun 2013],

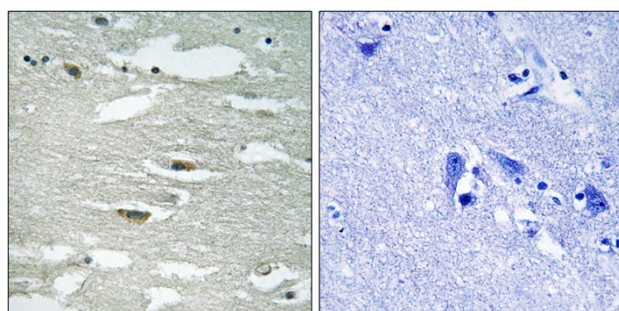
matters needing attention

Avoid repeated freezing and thawing!

Usage suggestions

This product can be used in immunological reaction related experiments. For more information, please consult technical personnel.

Products Images



Immunohistochemistry analysis of paraffin-embedded human brain, using ILK (Phospho-Ser246) Antibody. The picture on the right is blocked with the phospho peptide.