



# MLK1/2 (phospho Thr312/266) Polyclonal Antibody

|                           |  |
|---------------------------|--|
| <b>Catalog No</b>         | BYab-14551   |
| <b>Isotype</b>            | IgG  |
| <b>Reactivity</b>         | Human;Mouse  |
| <b>Applications</b>       | IHC;IF;ELISA   |
| <b>Gene Name</b>          | MAP3K9/MAP3K10   |
| <b>Protein Name</b>       | Mitogen-activated protein kinase kinase kinase 9/10  |
| <b>Immunogen</b>          | The antiserum was produced against synthesized peptide derived from human MLK1/2 around the phosphorylation site of Thr312/266. AA range:281-330   |
| <b>Specificity</b>        | Phospho-MLK1/2 (T312/266) Polyclonal Antibody detects endogenous levels of MLK1/2 protein only when phosphorylated at T312/266.  |
| <b>Formulation</b>        | Liquid in PBS containing 50% glycerol, 0.5% BSA and 0.02% sodium azide.  |
| <b>Source</b>             | Polyclonal, Rabbit,IgG   |
| <b>Purification</b>       | The antibody was affinity-purified from rabbit antiserum by affinity-chromatography using epitope-specific immunogen.  |
| <b>Dilution</b>           | IHC: 1/100 - 1/300. ELISA: 1/5000.. IF 1:50-200  |
| <b>Concentration</b>      | 1 mg/ml  |
| <b>Purity</b>             | ≥90%   |
| <b>Storage Stability</b>  | -20°C/1 year   |
| <b>Synonyms</b>           | MAP3K9; MLK1; PRKE1; Mitogen-activated protein kinase kinase kinase 9; Mixed lineage kinase 1; MAP3K10; MLK2; MST; Mitogen-activated protein kinase kinase kinase 10; Mixed lineage kinase 2; Protein kinase MST   |
| <b>Observed Band</b>      |  |
| <b>Cell Pathway</b>       | intracellular,integral component of membrane,  |
| <b>Tissue Specificity</b> | Expressed in epithelial tumor cell lines of colonic, breast and esophageal origin.   |
| <b>Function</b>           | catalytic activity:ATP + a protein = ADP + a phosphoprotein.,cofactor:Magnesium.,enzyme regulation:Homodimerization via the leucine zipper domains is required for autophosphorylation and subsequent activation.,function:Activates the JUN N-terminal pathway.,PTM:Autophosphorylation on serine and threonine residues within the activation loop plays a role in enzyme activation. Thr-312 is likely to be the main autophosphorylation site.,similarity:Belongs to the protein kinase superfamily. STE Ser/Thr protein kinase family. MAP kinase kinase kinase subfamily.,similarity:Contains 1 protein kinase domain.,similarity:Contains 1 SH3 |

**Nanjing BYabscience technology Co.,Ltd**



domain.,subunit:Homodimer.,tissue specificity:Expressed in epithelial tumor cell lines of colonic, breast and esophageal origin.,

#### Background

catalytic activity:ATP + a protein = ADP + a phosphoprotein.,cofactor:Magnesium.,enzyme regulation:Homodimerization via the leucine zipper domains is required for autophosphorylation and subsequent activation.,function:Activates the JUN N-terminal pathway.,PTM:Autophosphorylation on serine and threonine residues within the activation loop plays a role in enzyme activation. Thr-312 is likely to be the main autophosphorylation site.,similarity:Belongs to the protein kinase superfamily. STE Ser/Thr protein kinase family. MAP kinase kinase kinase subfamily.,similarity:Contains 1 protein kinase domain.,similarity:Contains 1 SH3 domain.,subunit:Homodimer.,tissue specificity:Expressed in epithelial tumor cell lines of colonic, breast and esophageal origin.,

#### matters needing attention

Avoid repeated freezing and thawing!

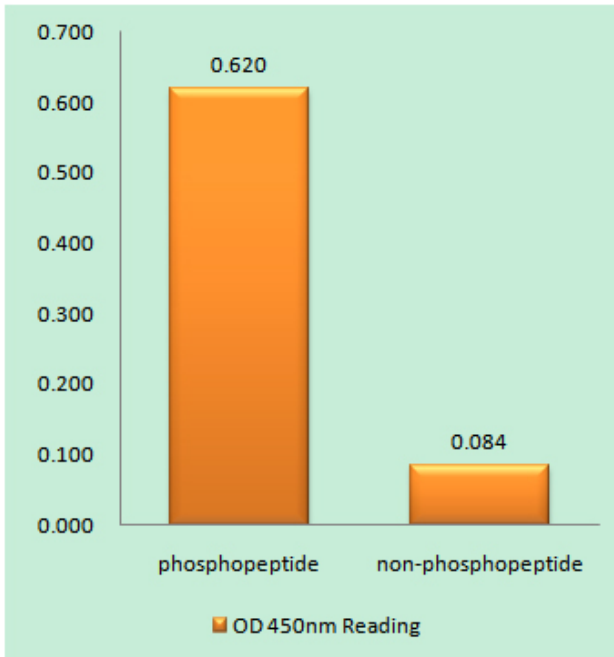
#### Usage suggestions

This product can be used in immunological reaction related experiments. For more information, please consult technical personnel.

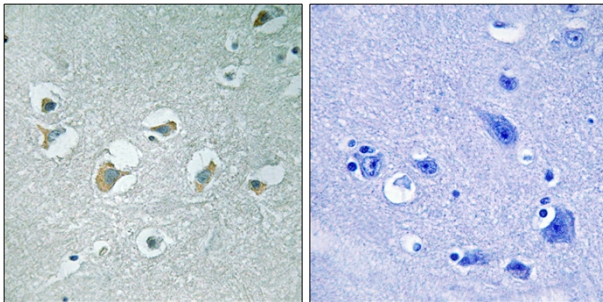
Nanjing BYabscience technology Co.,Ltd



## Products Images



Enzyme-Linked Immunosorbent Assay (Phospho-ELISA) for Immunogen Phosphopeptide (Phospho-left) and Non-Phosphopeptide (Phospho-right), using MLK1/2 (Phospho-Thr312/266) Antibody



Immunohistochemistry analysis of paraffin-embedded human brain, using MLK1/2 (Phospho-Thr312/266) Antibody. The picture on the right is blocked with the phosphopeptide.

Nanjing BYabscience technology Co.,Ltd

网址: [www.njbybio.com](http://www.njbybio.com)

官方热线: 025-5229-8998

监督电话: 15950492658