



AAK1 Polyclonal Antibody

Catalog No	BYab-14640
Isotype	IgG
Reactivity	Human;Mouse;Rat;Monkey
Applications	WB;IHC;IF;ELISA
Gene Name	AAK1
Protein Name	AP2-associated protein kinase 1
Immunogen	The antiserum was produced against synthesized peptide derived from human AAK1. AA range:271-320
Specificity	AAK1 Polyclonal Antibody detects endogenous levels of AAK1 protein.
Formulation	Liquid in PBS containing 50% glycerol, 0.5% BSA and 0.02% sodium azide.
Source	Polyclonal, Rabbit,IgG
Purification	The antibody was affinity-purified from rabbit antiserum by affinity-chromatography using epitope-specific immunogen.
Dilution	Western Blot: 1/500 - 1/2000. Immunohistochemistry: 1/100 - 1/300. Immunofluorescence: 1/200 - 1/1000. ELISA: 1/20000. Not yet tested in other applications.
Concentration	1 mg/ml
Purity	≥90%
Storage Stability	-20°C/1 year
Synonyms	AAK1; KIAA1048; AP2-associated protein kinase 1; Adaptor-associated kinase 1
Observed Band	94kD
Cell Pathway	Cell membrane ; Peripheral membrane protein . Membrane, clathrin-coated pit . Cell junction, synapse, presynapse . Active when found in clathrin-coated pits at the plasma membrane. In neuronal cells, enriched at presynaptic terminals. In non-neuronal cells, enriched at leading edge of migrating cells. .
Tissue Specificity	Detected in brain, heart and liver. Isoform 1 is the predominant isoform in brain.
Function	catalytic activity:ATP + a protein = ADP + a phosphoprotein.,enzyme regulation:Stimulated by clathrin.,function:Phosphorylates the AP2M1/mu2 subunit of the adaptor protein complex 2 (AP-2). May play a role in regulating aspects of clathrin-mediated endocytosis.,PTM:Autophosphorylated.,similarity:Belongs to the protein kinase superfamily. Ser/Thr protein kinase family.,similarity:Contains 1 protein kinase domain.,subcellular location:Active when found in clathrin-coated pits at the plasma membrane.,subunit:Interacts with alpha-adaptin and AP-2.,

Nanjing BYabscience technology Co.,Ltd

**Background**

Adaptor-related protein complex 2 (AP-2 complexes) functions during receptor-mediated endocytosis to trigger clathrin assembly, interact with membrane-bound receptors, and recruit endocytic accessory factors. This gene encodes a member of the SNF1 subfamily of Ser/Thr protein kinases. The protein interacts with and phosphorylates a subunit of the AP-2 complex, which promotes binding of AP-2 to sorting signals found in membrane-bound receptors and subsequent receptor endocytosis. Its kinase activity is stimulated by clathrin. Alternatively spliced transcript variants have been described, but their biological validity has not been determined. [provided by RefSeq, Jul 2008],

matters needing attention

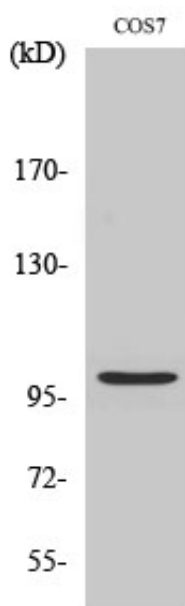
Avoid repeated freezing and thawing!

Usage suggestions

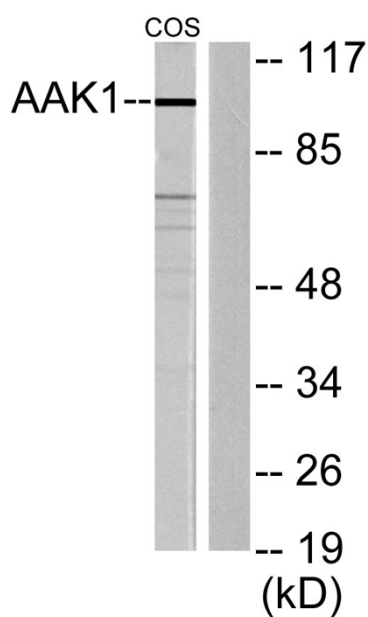
This product can be used in immunological reaction related experiments. For more information, please consult technical personnel.



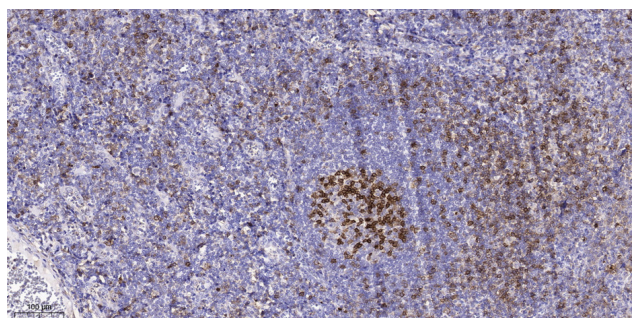
Products Images



Western Blot analysis of various cells using AAK1 Polyclonal Antibody



Western blot analysis of lysates from COS7 cells, using AAK1 Antibody. The lane on the right is blocked with the synthesized peptide.



Immunohistochemical analysis of paraffin-embedded human tonsil. 1, Antibody was diluted at 1:200(4° overnight). 2, Tris-EDTA,pH9.0 was used for antigen retrieval. 3,Secondary antibody was diluted at 1:200(room temperature, 45min).

Nanjing BYabscience technology Co.,Ltd

网址: www.njbybio.com

官方热线: 025-5229-8998

监督电话: 15950492658



Nanjing BYabscience technology Co.,Ltd

网址: www.njbybio.com

官方热线: 025-5229-8998

监督电话: 15950492658