



DRAK2 Polyclonal Antibody

Catalog No	BYab-14732
Isotype	IgG
Reactivity	Human;Mouse;Rat
Applications	WB;IHC;IF;ELISA
Gene Name	STK17B
Protein Name	Serine/threonine-protein kinase 17B
Immunogen	The antiserum was produced against synthesized peptide derived from human STK17B. AA range:251-300
Specificity	DRAK2 Polyclonal Antibody detects endogenous levels of DRAK2 protein.
Formulation	Liquid in PBS containing 50% glycerol, 0.5% BSA and 0.02% sodium azide.
Source	Polyclonal, Rabbit,IgG
Purification	The antibody was affinity-purified from rabbit antiserum by affinity-chromatography using epitope-specific immunogen.
Dilution	WB: 1/500 - 1/2000. IHC: 1/100 - 1/300. ELISA: 1/40000.. IF 1:50-200
Concentration	1 mg/ml
Purity	≥90%
Storage Stability	-20°C/1 year
Synonyms	STK17B; DRAK2; Serine/threonine-protein kinase 17B; DAP kinase-related apoptosis-inducing protein kinase 2
Observed Band	45kD
Cell Pathway	Nucleus . Cell membrane . Endoplasmic reticulum-Golgi intermediate compartment . Colocalizes with STK17B at the plasma membrane. .
Tissue Specificity	Highly expressed in placenta, lung, pancreas. Lower levels in heart, brain, liver, skeletal muscle and kidney.
Function	catalytic activity:ATP + a protein = ADP + a phosphoprotein.,function:Acts as a positive regulator of apoptosis.,PTM:Autophosphorylated.,similarity:Belongs to the protein kinase superfamily.,similarity:Belongs to the protein kinase superfamily. CAMK Ser/Thr protein kinase family. DAP kinase subfamily.,similarity:Contains 1 protein kinase domain.,subunit:Interacts with CHP causing CHP to translocate from the Golgi to the nucleus.,tissue specificity:Highly expressed in placenta, lung, pancreas. Lower levels in heart, brain, liver, skeletal muscle and kidney.,

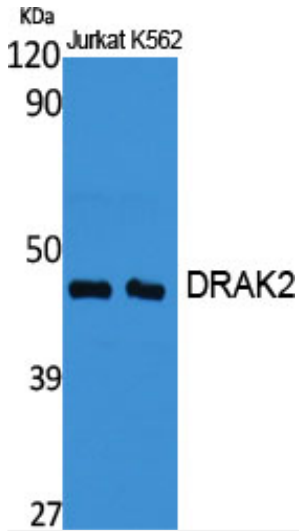
Nanjing BYabscience technology Co.,Ltd



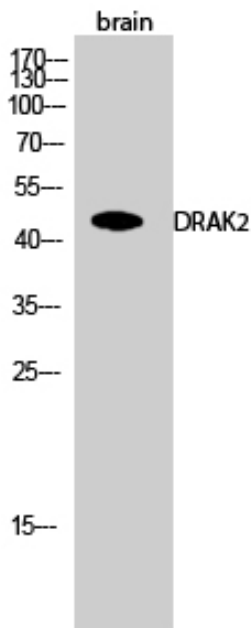
Background	catalytic activity:ATP + a protein = ADP + a phosphoprotein.,function:Acts as a positive regulator of apoptosis.,PTM:Autophosphorylated.,similarity:Belongs to the protein kinase superfamily.,similarity:Belongs to the protein kinase superfamily. CAMK Ser/Thr protein kinase family. DAP kinase subfamily.,similarity:Contains 1 protein kinase domain.,subunit:Interacts with CHP causing CHP to translocate from the Golgi to the nucleus.,tissue specificity:Highly expressed in placenta, lung, pancreas. Lower levels in heart, brain, liver, skeletal muscle and kidney.,
matters needing attention	Avoid repeated freezing and thawing!
Usage suggestions	This product can be used in immunological reaction related experiments. For more information, please consult technical personnel.



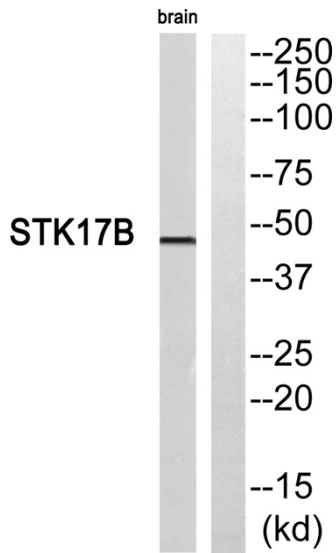
Products Images



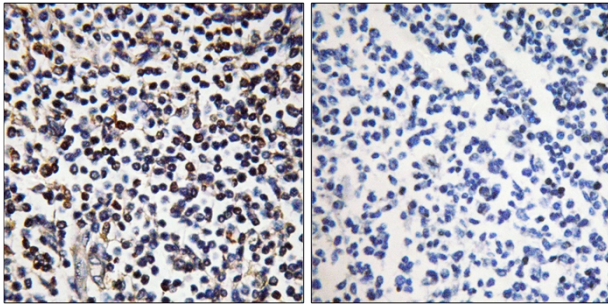
Western Blot analysis of various cells using DRAK2 Polyclonal Antibody cells nucleus extracted by Minute TM Cytoplasmic and Nuclear Fractionation kit (SC-003, Inventbiotech, MN, USA).



Western Blot analysis of brain cells using DRAK2 Polyclonal Antibody cells nucleus extracted by Minute TM Cytoplasmic and Nuclear Fractionation kit (SC-003, Inventbiotech, MN, USA).



Western blot analysis of STK17B Antibody. The lane on the right is blocked with the STK17B peptide.



Immunohistochemistry analysis of paraffin-embedded human tonsil, using STK17B Antibody. The lane on the right is blocked with the STK17B peptide.