



Dyrk1A Polyclonal Antibody

Catalog No	BYab-14734
Isotype	IgG
Reactivity	Human;Mouse;Rat
Applications	WB;IHC;IF;ELISA
Gene Name	DYRK1A
Protein Name	Dual specificity tyrosine-phosphorylation-regulated kinase 1A
Immunogen	The antiserum was produced against synthesized peptide derived from human DYRK1A. AA range:21-70
Specificity	Dyrk1A Polyclonal Antibody detects endogenous levels of Dyrk1A protein.
Formulation	Liquid in PBS containing 50% glycerol, 0.5% BSA and 0.02% sodium azide.
Source	Polyclonal, Rabbit,IgG
Purification	The antibody was affinity-purified from rabbit antiserum by affinity-chromatography using epitope-specific immunogen.
Dilution	Western Blot: 1/500 - 1/2000. Immunohistochemistry: 1/100 - 1/300. Immunofluorescence: 1/200 - 1/1000. ELISA: 1/20000. Not yet tested in other applications.
Concentration	1 mg/ml
Purity	≥90%
Storage Stability	-20°C/1 year
Synonyms	DYRK1A; DYRK; MNB; MNBH; Dual specificity tyrosine-phosphorylation-regulated kinase 1A; Dual specificity YAK1-related kinase; HP86; Protein kinase minibrain homolog; MNBH; hMNB
Observed Band	90kD
Cell Pathway	Nucleus . Nucleus speckle .
Tissue Specificity	Ubiquitous. Highest levels in skeletal muscle, testis, fetal lung and fetal kidney.
Function	alternative products:Additional isoforms seem to exist,catalytic activity:ATP + a protein = ADP + a phosphoprotein.,developmental stage:Expressed in the developing central nervous system.,disease:Overexpressed 1.5-fold in fetal Down syndrome brain.,enzyme regulation:Inhibited by RANBP9.,function:May play a role in a signaling pathway regulating nuclear functions of cell proliferation. Phosphorylates serine, threonine and tyrosine residues in its sequence and in exogenous substrates.,PTM:Autophosphorylated on tyrosine residues.,similarity:Belongs to the protein kinase superfamily. CMGC Ser/Thr

Nanjing BYabscience technology Co.,Ltd



protein kinase family. MNB/DYRK subfamily.,similarity:Contains 1 protein kinase domain.,subunit:Interacts RAD54L2/ARIP4 (By similarity). Interacts with RANBP9.,tissue specificity:Ubiquitous. Highest levels in skeletal muscle, testis, fetal lung and fetal kidney.,

Background

This gene encodes a member of the Dual-specificity tyrosine phosphorylation-regulated kinase (DYRK) family. This member contains a nuclear targeting signal sequence, a protein kinase domain, a leucine zipper motif, and a highly conservative 13-consecutive-histidine repeat. It catalyzes its autophosphorylation on serine/threonine and tyrosine residues. It may play a significant role in a signaling pathway regulating cell proliferation and may be involved in brain development. This gene is a homolog of Drosophila mnb (minibrain) gene and rat Dyrk gene. It is localized in the Down syndrome critical region of chromosome 21, and is considered to be a strong candidate gene for learning defects associated with Down syndrome. Alternative splicing of this gene generates several transcript variants differing from each other either in the 5' UTR or in the 3' co

matters needing attention

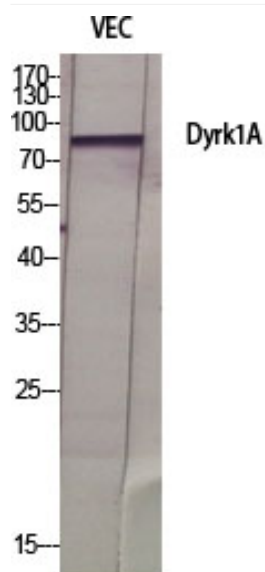
Avoid repeated freezing and thawing!

Usage suggestions

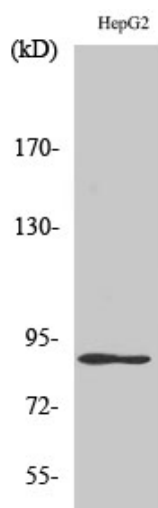
This product can be used in immunological reaction related experiments. For more information, please consult technical personnel.



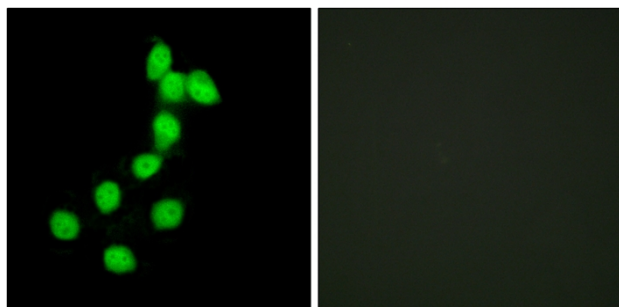
Products Images



Western Blot analysis of various cells using Dyrk1A Polyclonal Antibody diluted at 1:500 cells nucleus extracted by Minute TM Cytoplasmic and Nuclear Fractionation kit (SC-003, Inventbiotech, MN, USA).



Western Blot analysis of HepG2 cells using Dyrk1A Polyclonal Antibody diluted at 1:500 cells nucleus extracted by Minute TM Cytoplasmic and Nuclear Fractionation kit (SC-003, Inventbiotech, MN, USA).



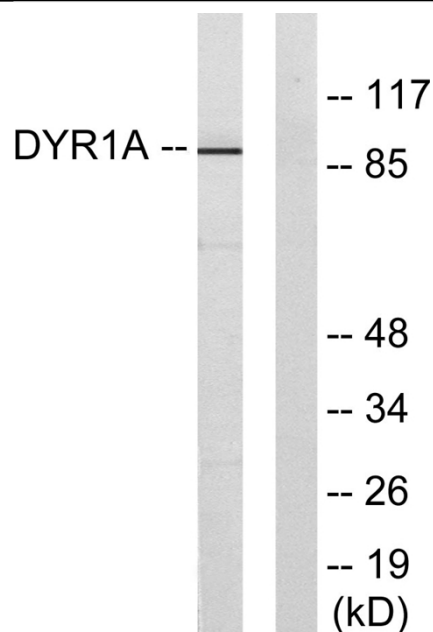
Immunofluorescence analysis of HepG2 cells, using Dyrk1A Antibody. The picture on the right is blocked with the synthesized peptide.

Nanjing BYabs science technology Co.,Ltd

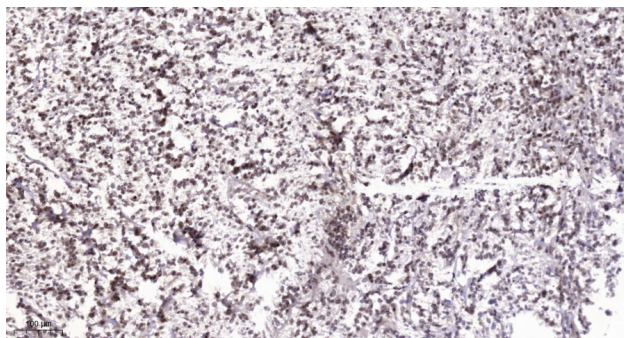
网址: www.njbybio.com

官方热线: 025-5229-8998

监督电话: 15950492658



Western blot analysis of lysates from HepG2 cells, using DYR1A Antibody. The lane on the right is blocked with the synthesized peptide.



Immunohistochemical analysis of paraffin-embedded human Colon cancer. 1, Antibody was diluted at 1:200(4° overnight). 2, Tris-EDTA,pH9.0 was used for antigen retrieval. 3,Secondary antibody was diluted at 1:200(room temperature, 45min).