



IKK α / β Polyclonal Antibody

Catalog No	BYab-14781
Isotype	IgG
Reactivity	Human;Mouse;Rat;Pig
Applications	WB;IHC;IF;ELISA
Gene Name	CHUK/IKBKB
Protein Name	Inhibitor of nuclear factor kappa-B kinase subunit alpha
Immunogen	The antiserum was produced against synthesized peptide derived from human IKK-alpha/beta. AA range:141-190
Specificity	IKK α / β Polyclonal Antibody detects endogenous levels of IKK α / β protein.
Formulation	Liquid in PBS containing 50% glycerol, 0.5% BSA and 0.02% sodium azide.
Source	Polyclonal, Rabbit,IgG
Purification	The antibody was affinity-purified from rabbit antiserum by affinity-chromatography using epitope-specific immunogen.
Dilution	WB: 1/500 - 1/2000. IHC: 1/100 - 1/300. ELISA: 1/20000.. IF 1:50-200
Concentration	1 mg/ml
Purity	≥90%
Storage Stability	-20°C/1 year
Synonyms	CHUK; IKKA; TCF16; Inhibitor of nuclear factor kappa-B kinase subunit alpha; I-kappa-B kinase alpha; IKK-A; IKK-alpha; IkBKA; IkappaB kinase; Conserved helix-loop-helix ubiquitous kinase; I-kappa-B kinase 1; IKK1; Nuclear factor NF-kappa-B
Observed Band	85kD
Cell Pathway	Cytoplasm . Nucleus . Shuttles between the cytoplasm and the nucleus.
Tissue Specificity	Widely expressed.
Function	catalytic activity:ATP + [I-kappa-B protein] = ADP + [I-kappa-B phosphoprotein] .,enzyme regulation:Activated when phosphorylated and inactivated when dephosphorylated .,function:Acts as part of the IKK complex in the conventional pathway of NF-kappa-B activation and phosphorylates inhibitors of NF-kappa-B thus leading to the dissociation of the inhibitor/NF-kappa-B complex and ultimately the degradation of the inhibitor. As part of the non-canonical pathway of NF-kappa-B activation, the MAP3K14-activated

Nanjing BYabscience technology Co.,Ltd



CHUK/IKKA homodimer phosphorylates NFkB2/p100 associated with RelB, inducing its proteolytic processing to NFkB2/p52 and the formation of NF-kappa-B RelB-p52 complexes. Also phosphorylates NCOA3. Phosphorylates 'Ser-10' of histone H3 at NF-kappa-B-regulated promoters during inflammatory responses triggered by cytokines.,PTM:Phosphorylated by MAP3K14/NIK, AKT and to a lesser extent by MEKK

Background

This gene encodes a member of the serine/threonine protein kinase family. The encoded protein, a component of a cytokine-activated protein complex that is an inhibitor of the essential transcription factor NF-kappa-B complex, phosphorylates sites that trigger the degradation of the inhibitor via the ubiquitination pathway, thereby activating the transcription factor. [provided by RefSeq, Jul 2008],

matters needing attention

Avoid repeated freezing and thawing!

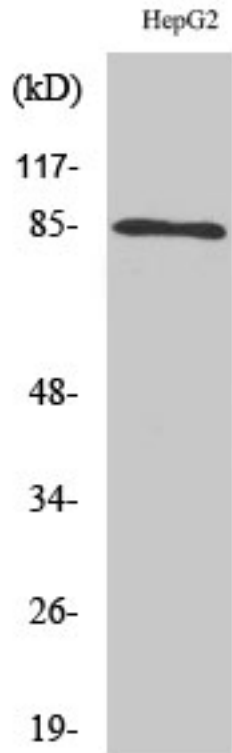
Usage suggestions

This product can be used in immunological reaction related experiments. For more information, please consult technical personnel.

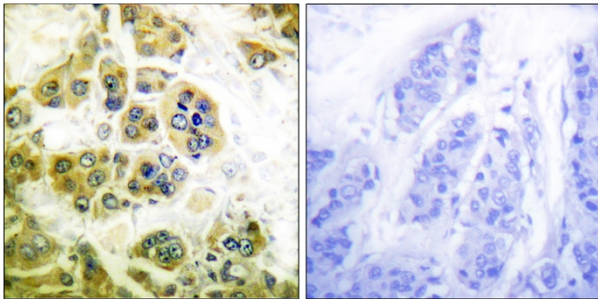
Nanjing BYabscience technology Co.,Ltd



Products Images



Western Blot analysis of various cells using IKK α / β Polyclonal Antibody



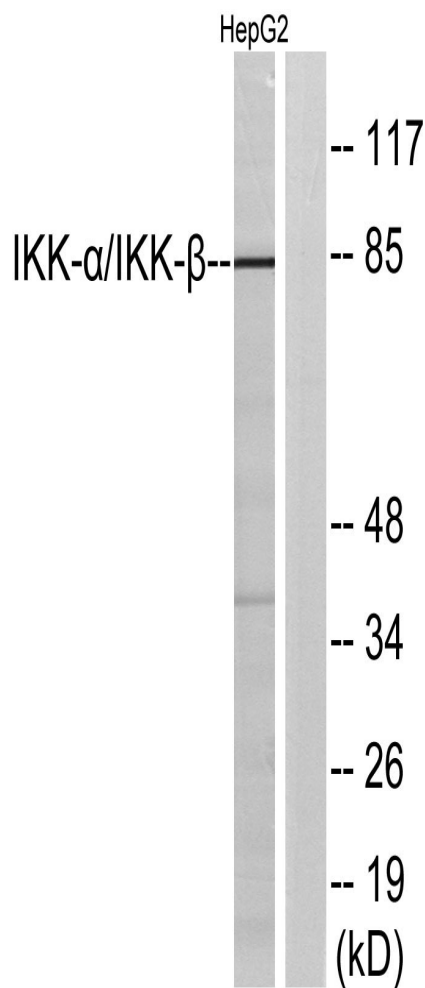
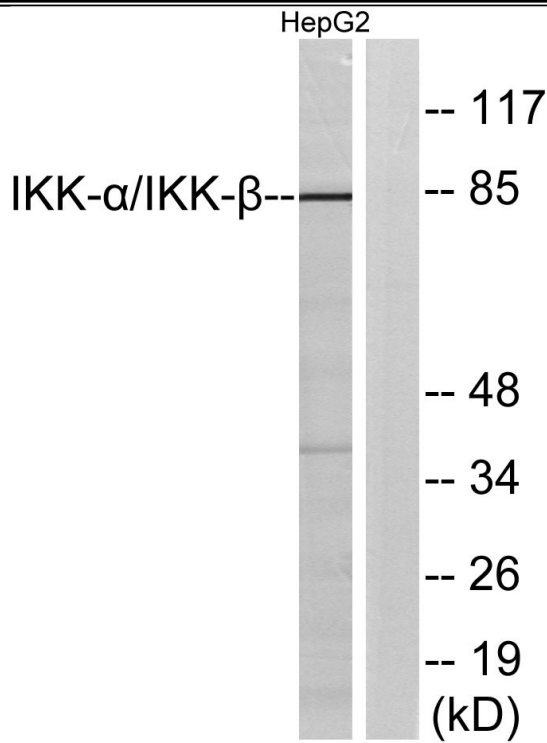
Immunohistochemistry analysis of paraffin-embedded human breast carcinoma tissue, using IKK- α / β Antibody. The picture on the right is blocked with the synthesized peptide.

Nanjing BYabscience technology Co.,Ltd

网址: www.njbybio.com

官方热线: 025-5229-8998

监督电话: 15950492658



Western blot analysis of lysates from HepG2 cells, using IKK-alpha/beta Antibody. The lane on the right is blocked with the synthesized peptide.