



IKK β Polyclonal Antibody

Catalog No	BYab-14782
Isotype	IgG
Reactivity	Human;Mouse;Rat
Applications	WB;IHC;IF;ELISA
Gene Name	IKBKB
Protein Name	Inhibitor of nuclear factor kappa-B kinase subunit beta
Immunogen	The antiserum was produced against synthesized peptide derived from human IKK-beta. AA range:166-215
Specificity	IKK β Polyclonal Antibody detects endogenous levels of IKK β protein.
Formulation	Liquid in PBS containing 50% glycerol, 0.5% BSA and 0.02% sodium azide.
Source	Polyclonal, Rabbit,IgG
Purification	The antibody was affinity-purified from rabbit antiserum by affinity-chromatography using epitope-specific immunogen.
Dilution	IHC: 1/100 - 1/300. ELISA: 1/10000.. IF 1:50-200
Concentration	1 mg/ml
Purity	≥90%
Storage Stability	-20°C/1 year
Synonyms	IKBKB; IKKB; Inhibitor of nuclear factor kappa-B kinase subunit beta; I-kappa-B-kinase beta; IKK-B; IKK-beta; Ikbkb; I-kappa-B kinase 2; IKK2; Nuclear factor NF-kappa-B inhibitor kinase beta; NFKBIB
Observed Band	86kD
Cell Pathway	Cytoplasm . Nucleus . Membrane raft . Colocalized with DPP4 in membrane rafts.
Tissue Specificity	Highly expressed in heart, placenta, skeletal muscle, kidney, pancreas, spleen, thymus, prostate, testis and peripheral blood.
Function	catalytic activity:ATP + [I-kappa-B protein] = ADP + [I-kappa-B phosphoprotein]..function:Acts as part of the IKK complex in the conventional pathway of NF-kappa-B activation and phosphorylates inhibitors of NF-kappa-B thus leading to the dissociation of the inhibitor/NF-kappa-B complex and ultimately the degradation of the inhibitor. Also phosphorylates NCOA3..PTM:Ubiquitination on 'Ser-163' modulates phosphorylation on C-terminal serine residues..PTM:Upon cytokine stimulation, phosphorylated on Ser-177 and Ser-181 by MEKK1 and/or MAP3K14/NIK; which enhances activity.

Nanjing BYabscience technology Co.,Ltd



Once activated, autophosphorylates on the C-terminal serine cluster; which decreases activity and prevents prolonged activation of the inflammatory response.,PTM:Yersinia yopJ may acetylate Ser/Thr residues, preventing phosphorylation and activation, which blocks the I-kappa-B signaling pathway.,similarity:Belongs to the p

Background

The protein encoded by this gene phosphorylates the inhibitor in the inhibitor/NF-kappa-B complex, causing dissociation of the inhibitor and activation of NF-kappa-B. The encoded protein itself is found in a complex of proteins. Several transcript variants, some protein-coding and some not, have been found for this gene. [provided by RefSeq, Sep 2011],

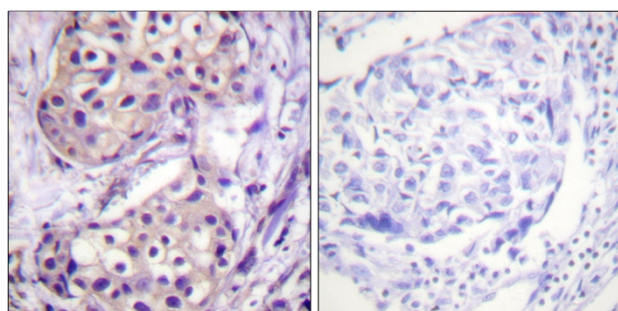
matters needing attention

Avoid repeated freezing and thawing!

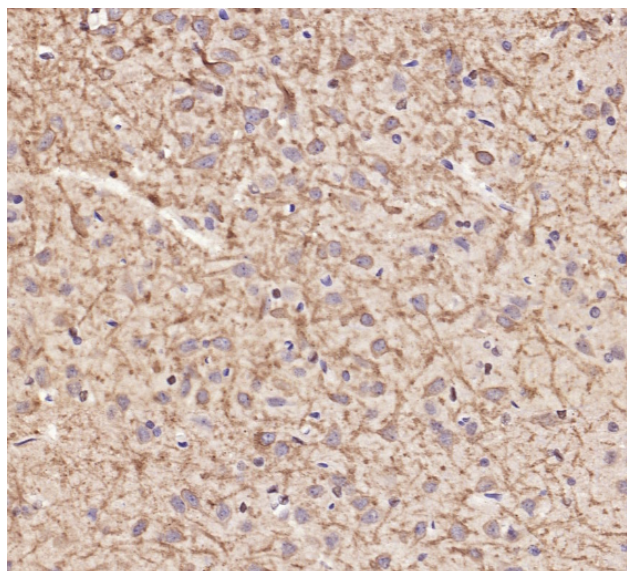
Usage suggestions

This product can be used in immunological reaction related experiments. For more information, please consult technical personnel.

Products Images



Immunohistochemistry analysis of paraffin-embedded human breast carcinoma tissue, using IKK-beta Antibody. The picture on the right is blocked with the synthesized peptide.



Immunohistochemical analysis of paraffin-embedded human brain. 1,primary Antibody was diluted at 1:200(4° overnight). 2, EDTA pH 9.0 was used for antigen retrieval 3 Reday to use Secondary antibody(catalog: RS0011) was used at 37°C, 30min