



Ksr2 Polyclonal Antibody

Catalog No	BYab-14811
Isotype	IgG
Reactivity	Human;Mouse
Applications	WB;IHC;IF;ELISA
Gene Name	KSR2
Protein Name	Kinase suppressor of Ras 2
Immunogen	The antiserum was produced against synthesized peptide derived from human KSR2. AA range:671-720
Specificity	Ksr2 Polyclonal Antibody detects endogenous levels of Ksr2 protein.
Formulation	Liquid in PBS containing 50% glycerol, 0.5% BSA and 0.02% sodium azide.
Source	Polyclonal, Rabbit,IgG
Purification	The antibody was affinity-purified from rabbit antiserum by affinity-chromatography using epitope-specific immunogen.
Dilution	Western Blot: 1/500 - 1/2000. Immunohistochemistry: 1/100 - 1/300. Immunofluorescence: 1/200 - 1/1000. ELISA: 1/40000. Not yet tested in other applications.
Concentration	1 mg/ml
Purity	≥90%
Storage Stability	-20°C/1 year
Synonyms	KSR2; Kinase suppressor of Ras 2; hKSR2
Observed Band	108kD
Cell Pathway	Cytoplasm . Membrane ; Peripheral membrane protein .
Tissue Specificity	Mainly expressed in brain and kidney.
Function	domain:The protein kinase domain is predicted to be catalytically inactive.,function:Location-regulated scaffold connecting MEK to RAF. Blocks MAP3K8 kinase activity and MAP3K8-mediated signaling. Acts as a negative regulator of MAP3K3-mediated activation of ERK, JNK and NF-kappa-B pathways, inhibiting MAP3K3-mediated interleukin-8 production.,PTM:Phosphorylated on Ser-474 by MARK3.,similarity:Belongs to the protein kinase superfamily. TKL Ser/Thr protein kinase family.,similarity:Contains 1 phorbol-ester/DAG-type zinc finger.,similarity:Contains 1 protein kinase domain.,subunit:Interacts with MAP2K1, MAP3K8, MAPK, RAS and RAF.,tissue specificity:Mainly expressed in brain and kidney.,

Nanjing BYabscience technology Co.,Ltd

**Background**

domain:The protein kinase domain is predicted to be catalytically inactive.,function:Location-regulated scaffold connecting MEK to RAF. Blocks MAP3K8 kinase activity and MAP3K8-mediated signaling. Acts as a negative regulator of MAP3K3-mediated activation of ERK, JNK and NF-kappa-B pathways, inhibiting MAP3K3-mediated interleukin-8 production.,PTM:Phosphorylated on Ser-474 by MARK3.,similarity:Belongs to the protein kinase superfamily. TKL Ser/Thr protein kinase family.,similarity:Contains 1 phorbol-ester/DAG-type zinc finger.,similarity:Contains 1 protein kinase domain.,subunit:Interacts with MAP2K1, MAP3K8, MAPK, RAS and RAF.,tissue specificity:Mainly expressed in brain and kidney.,

matters needing attention

Avoid repeated freezing and thawing!

Usage suggestions

This product can be used in immunological reaction related experiments. For more information, please consult technical personnel.

Nanjing BYabscience technology Co.,Ltd

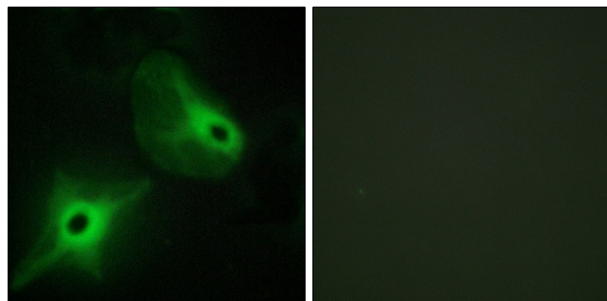
网址: www.njbybio.com

官方热线: 025-5229-8998

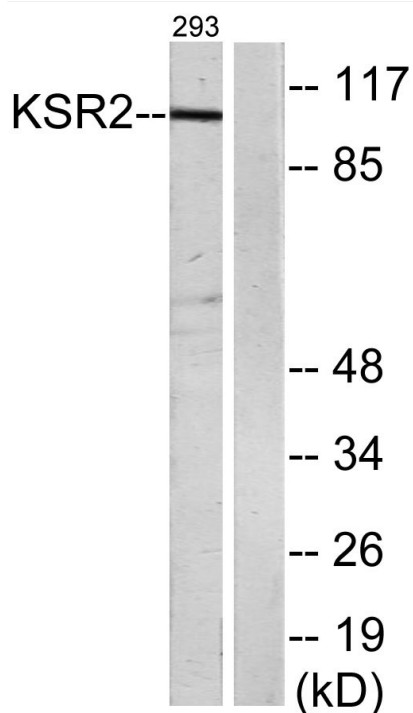
监督电话: 15950492658



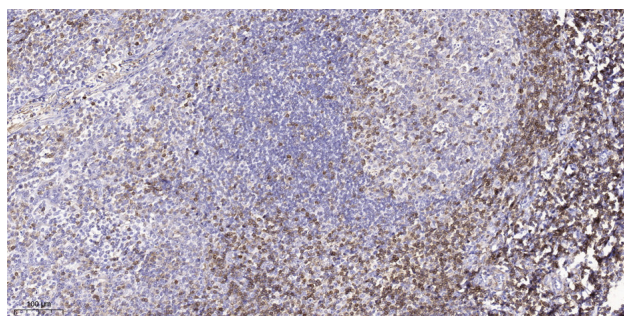
Products Images



Immunofluorescence analysis of HeLa cells, using KSR2 Antibody. The picture on the right is blocked with the synthesized peptide.



Western blot analysis of lysates from 293 cells, using KSR2 Antibody. The lane on the right is blocked with the synthesized peptide.



Immunohistochemical analysis of paraffin-embedded human tonsil. 1, Tris-EDTA, pH9.0 was used for antigen retrieval. 2 Antibody was diluted at 1:200(4° overnight. 3, Secondary antibody was diluted at 1:200(room temperature, 45min).