



LMTK3 Polyclonal Antibody

Catalog No	BYab-14817
Isotype	IgG
Reactivity	Human;Mouse
Applications	WB;IHC;IF;ELISA
Gene Name	LMTK3
Protein Name	Serine/threonine-protein kinase LMTK3
Immunogen	The antiserum was produced against synthesized peptide derived from human LMTK3. AA range:1251-1300
Specificity	LMTK3 Polyclonal Antibody detects endogenous levels of LMTK3 protein.
Formulation	Liquid in PBS containing 50% glycerol, 0.5% BSA and 0.02% sodium azide.
Source	Polyclonal, Rabbit,IgG
Purification	The antibody was affinity-purified from rabbit antiserum by affinity-chromatography using epitope-specific immunogen.
Dilution	WB: 1/500 - 1/2000. IHC: 1/100 - 1/300. ELISA: 1/20000.. IF 1:50-200
Concentration	1 mg/ml
Purity	≥90%
Storage Stability	-20°C/1 year
Synonyms	LMTK3; KIAA1883; TYKLM3; Serine/threonine-protein kinase LMTK3; Lemur tyrosine kinase 3
Observed Band	40kD
Cell Pathway	Membrane ; Single-pass membrane protein . Cell projection, axon . Cell projection, dendrite . Golgi apparatus membrane . Punctate pattern in cell projections.
Tissue Specificity	Brain,
Function	catalytic activity:ATP + a protein = ADP + a phosphoprotein.,similarity:Belongs to the protein kinase superfamily. Tyr protein kinase family.,similarity:Contains 1 protein kinase domain.,
Background	catalytic activity:ATP + a protein = ADP + a phosphoprotein.,similarity:Belongs to the protein kinase superfamily. Tyr protein kinase family.,similarity:Contains 1 protein kinase domain.,

Nanjing BYabscience technology Co.,Ltd

网址: www.njbybio.com

官方热线: 025-5229-8998

监督电话: 15950492658



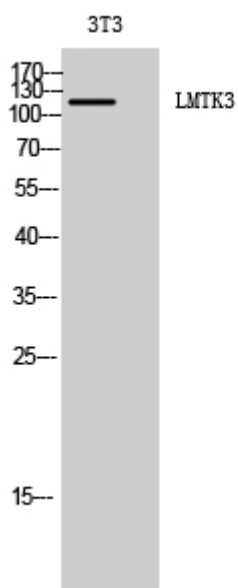
matters needing attention

Avoid repeated freezing and thawing!

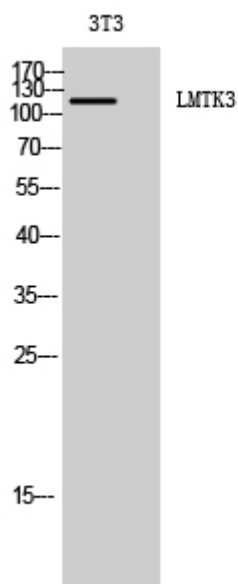
Usage suggestions

This product can be used in immunological reaction related experiments. For more information, please consult technical personnel.

Products Images



Western Blot analysis of 3T3 cells using LMTK3 Polyclonal Antibody diluted at 1:2000



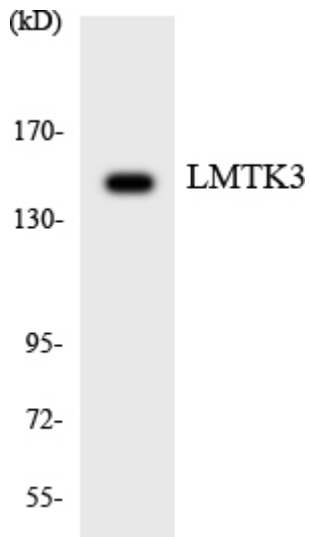
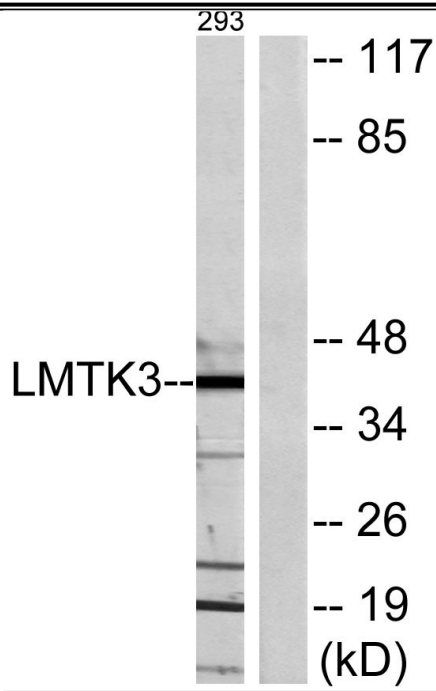
Western blot analysis of lysates from 293 cells, using LMTK3 Antibody. The lane on the right is blocked with the synthesized peptide.

Nanjing BYabscience technology Co.,Ltd

网址: www.njbybio.com

官方热线: 025-5229-8998

监督电话: 15950492658



Western blot analysis of the lysates from HeLa cells using LMTK3 antibody.