



MELK Polyclonal Antibody

Catalog No	BYab-14843
Isotype	IgG
Reactivity	Human;Rat;Mouse;
Applications	WB;IHC;IF;ELISA
Gene Name	MELK
Protein Name	Maternal embryonic leucine zipper kinase
Immunogen	The antiserum was produced against synthesized peptide derived from human MELK. AA range:431-480
Specificity	MELK Polyclonal Antibody detects endogenous levels of MELK protein.
Formulation	Liquid in PBS containing 50% glycerol, 0.5% BSA and 0.02% sodium azide.
Source	Polyclonal, Rabbit,IgG
Purification	The antibody was affinity-purified from rabbit antiserum by affinity-chromatography using epitope-specific immunogen.
Dilution	Western Blot: 1/500 - 1/2000. Immunohistochemistry: 1/100 - 1/300. Immunofluorescence: 1/200 - 1/1000. ELISA: 1/10000. Not yet tested in other applications.
Concentration	1 mg/ml
Purity	≥90%
Storage Stability	-20°C/1 year
Synonyms	MELK; KIAA0175; Maternal embryonic leucine zipper kinase; hMELK; Protein kinase Eg3; pEg3 kinase; Protein kinase PK38; hPK38; Tyrosine-protein kinase MELK
Observed Band	75kD
Cell Pathway	Cell membrane ; Peripheral membrane protein .
Tissue Specificity	Expressed in placenta, kidney, thymus, testis, ovary and intestine.
Function	catalytic activity:ATP + a protein = ADP + a phosphoprotein.,function:Phosphorylates ZNF622 and may contribute to its redirection to the nucleus. May be involved in the inhibition of spliceosome assembly during mitosis.,PTM:Autophosphorylated. Thr-478 phosphorylation during mitosis promotes interaction with PPP1R8.,similarity:Belongs to the protein kinase superfamily.,similarity:Belongs to the protein kinase superfamily. CAMK Ser/Thr protein kinase family. SNF1 subfamily.,similarity:Contains 1 KA1 (kinase-associated) domain.,similarity:Contains 1 protein kinase

Nanjing BYabs science technology Co.,Ltd



domain.,subunit:Interacts with ZNF622 and PPP1R8.,tissue specificity:Expressed in placenta, kidney, thymus, testis, ovary and intestine.,

Background

catalytic activity:ATP + a protein = ADP + a phosphoprotein.,function:Phosphorylates ZNF622 and may contribute to its redirection to the nucleus. May be involved in the inhibition of spliceosome assembly during mitosis.,PTM:Autophosphorylated. Thr-478 phosphorylation during mitosis promotes interaction with PPP1R8.,similarity:Belongs to the protein kinase superfamily.,similarity:Belongs to the protein kinase superfamily. CAMK Ser/Thr protein kinase family. SNF1 subfamily.,similarity:Contains 1 KA1 (kinase-associated) domain.,similarity:Contains 1 protein kinase domain.,subunit:Interacts with ZNF622 and PPP1R8.,tissue specificity:Expressed in placenta, kidney, thymus, testis, ovary and intestine.,

matters needing attention

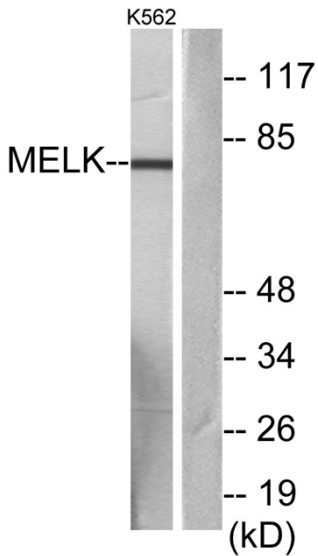
Avoid repeated freezing and thawing!

Usage suggestions

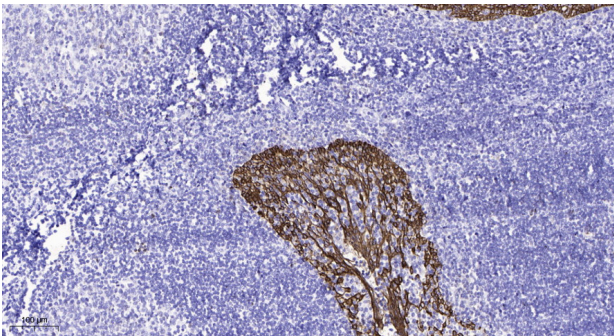
This product can be used in immunological reaction related experiments. For more information, please consult technical personnel.



Products Images



Western blot analysis of lysates from K562 cells, using MELK Antibody. The lane on the right is blocked with the synthesized peptide.



Immunohistochemical analysis of paraffin-embedded human tonsil. 1, Antibody was diluted at 1:200(4° overnight). 2, Tris-EDTA,pH9.0 was used for antigen retrieval. 3,Secondary antibody was diluted at 1:200(room temperature, 45min).