



Myt 1 Polyclonal Antibody

Catalog No	BYab-14871
Isotype	IgG
Reactivity	Human;Rat;Mouse;
Applications	WB;IHC;IF;ELISA
Gene Name	PKMYT1
Protein Name	Membrane-associated tyrosine- and threonine-specific cdc2-inhibitory kinase
Immunogen	The antiserum was produced against synthesized peptide derived from human PKMYT1. AA range:49-98
Specificity	Myt 1 Polyclonal Antibody detects endogenous levels of Myt 1 protein.
Formulation	Liquid in PBS containing 50% glycerol, 0.5% BSA and 0.02% sodium azide.
Source	Polyclonal, Rabbit,IgG
Purification	The antibody was affinity-purified from rabbit antiserum by affinity-chromatography using epitope-specific immunogen.
Dilution	WB: 1/500 - 1/2000. IHC: 1/100 - 1/300. ELISA: 1/20000.. IF 1:50-200
Concentration	1 mg/ml
Purity	≥90%
Storage Stability	-20°C/1 year
Synonyms	PKMYT1; MYT1; Membrane-associated tyrosine- and threonine-specific cdc2-inhibitory kinase; Myt1 kinase
Observed Band	50kD
Cell Pathway	Endoplasmic reticulum membrane ; Peripheral membrane protein . Golgi apparatus membrane ; Peripheral membrane protein .
Tissue Specificity	Brain,Epithelium,PCR rescued clones,
Function	catalytic activity:ATP + a protein = ADP + a phosphoprotein.,domain:The membrane-association motif is essential for the localization to membrane of Golgi stack. According to some authors, it is a transmembrane domain; the existence of a transmembrane region is however unproven.,enzyme regulation:Negatively regulated by hyperphosphorylation during mitosis. The hyperphosphorylated form does not associate with CCNB1-CDC2 complexes. The PLK1 protein kinase may be required for mitotic phosphorylation.,function:Acts as a negative regulator of entry into mitosis (G2 to M transition) by phosphorylation of the cdc2 kinase specifically when cdc2 is complexed to cyclins. Mediates phosphorylation of cdc2 predominantly on 'Thr-14'. Also involved in Golgi fragmentation. May be involved

Nanjing BYabscience technology Co.,Ltd



in phosphorylation of cdc2 on 'Tyr-15' to a lesser degree, however tyrosine kinase activity is unclear and may be ind

Background

This gene encodes a member of the serine/threonine protein kinase family. The encoded protein is a membrane-associated kinase that negatively regulates the G2/M transition of the cell cycle by phosphorylating and inactivating cyclin-dependent kinase 1. The activity of the encoded protein is regulated by polo-like kinase 1. Alternatively spliced transcript variants encoding multiple isoforms have been observed for this gene. [provided by RefSeq, May 2012],

matters needing attention

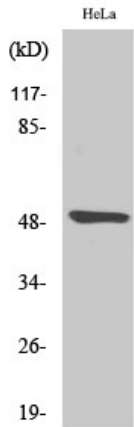
Avoid repeated freezing and thawing!

Usage suggestions

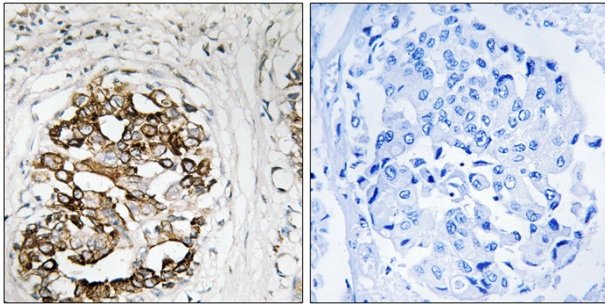
This product can be used in immunological reaction related experiments. For more information, please consult technical personnel.



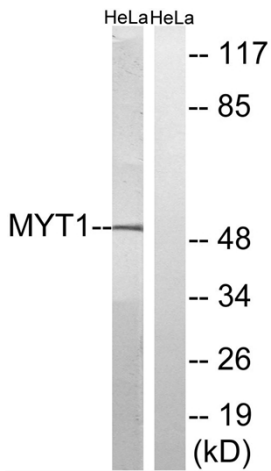
Products Images



Western Blot analysis of various cells using Myt 1 Polyclonal Antibody diluted at 1:2000



Immunohistochemistry analysis of paraffin-embedded human breast carcinoma, using MYT1 Antibody. The picture on the right is blocked with the synthesized peptide.



Western blot analysis of lysates from HeLa cells, using MYT1 Antibody. The lane on the right is blocked with the synthesized peptide.

Nanjing BYabs science technology Co.,Ltd

网址: www.njbybio.com

官方热线: 025-5229-8998

监督电话: 15950492658