



NARF Polyclonal Antibody

Catalog No	BYab-14872
Isotype	IgG
Reactivity	Human;Rat;Mouse;
Applications	WB;ELISA;IHC
Gene Name	NARF
Protein Name	Nuclear prelamin A recognition factor
Immunogen	The antiserum was produced against synthesized peptide derived from human NARF. AA range:262-311
Specificity	NARF Polyclonal Antibody detects endogenous levels of NARF protein.
Formulation	Liquid in PBS containing 50% glycerol, 0.5% BSA and 0.02% sodium azide.
Source	Polyclonal, Rabbit,IgG
Purification	The antibody was affinity-purified from rabbit antiserum by affinity-chromatography using epitope-specific immunogen.
Dilution	WB 1:500-2000;IHC-p 1:50-300; ELISA 2000-20000
Concentration	1 mg/ml
Purity	≥90%
Storage Stability	-20°C/1 year
Synonyms	NARF; Nuclear prelamin A recognition factor; Iron-only hydrogenase-like protein 2; IOP2
Observed Band	51kD
Cell Pathway	Nucleus .
Tissue Specificity	Ubiquitous. Predominantly expressed in skeletal muscle, heart and brain.
Function	PTM:Phosphorylated upon DNA damage, probably by ATM or ATR.,similarity:Belongs to the NARF family.,subunit:Interacts with LMNA and binds to the farnesylated C-terminal domain.,tissue specificity:Ubiquitous. Predominantly expressed in skeletal muscle, heart and brain.,
Background	Several proteins have been found to be prenylated and methylated at their carboxyl-terminal ends. Prenylation was initially believed to be important only for membrane attachment. However, another role for prenylation appears to be its importance in protein-protein interactions. The only nuclear proteins known to be prenylated in mammalian cells are prelamin A- and B-type lamins. Prelamin A is farnesylated and carboxymethylated on the cysteine residue of a

Nanjing BYabscience technology Co.,Ltd



carboxyl-terminal CaaX motif. This post-translationally modified cysteine residue is removed from prelamin A when it is endoproteolytically processed into mature lamin A. The protein encoded by this gene binds to the prenylated prelamin A carboxyl-terminal tail domain. It may be a component of a prelamin A endoprotease complex. The encoded protein is located in the nucleus, where it partially colocalizes with the nuclear lamina. It

matters needing attention

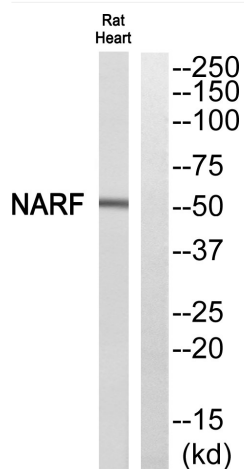
Avoid repeated freezing and thawing!

Usage suggestions

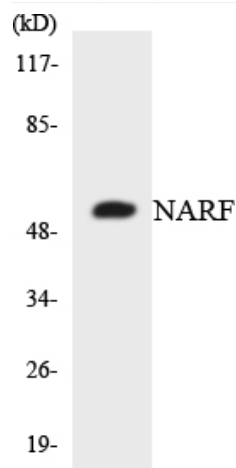
This product can be used in immunological reaction related experiments. For more information, please consult technical personnel.



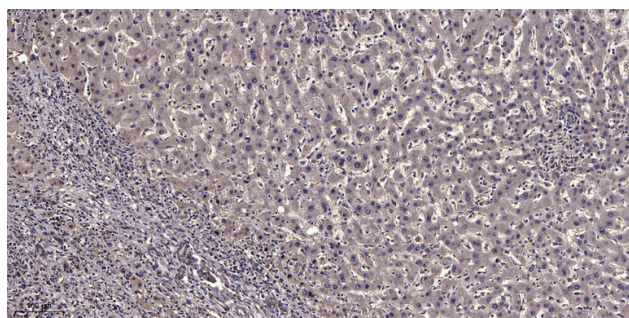
Products Images



Western blot analysis of NARF Antibody. The lane on the right is blocked with the NARF peptide.



Western blot analysis of the lysates from 293 cells using NARF antibody.



Immunohistochemical analysis of paraffin-embedded human liver cancer. 1, Antibody was diluted at 1:200(4° overnight). 2, Tris-EDTA,pH9.0 was used for antigen retrieval. 3,Secondary antibody was diluted at 1:200(room temperature, 45min).