



p70 S6 kinase β Polyclonal Antibody

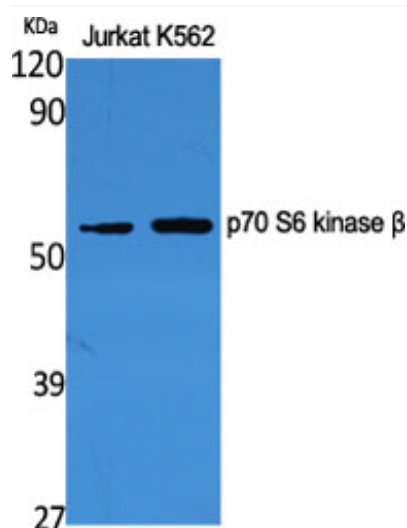
Catalog No	BYab-14889
Isotype	IgG
Reactivity	Human;Mouse
Applications	WB;IHC;IF;ELISA
Gene Name	RPS6KB2
Protein Name	Ribosomal protein S6 kinase beta-2
Immunogen	The antiserum was produced against synthesized peptide derived from human p70 S6 Kinase beta. AA range:389-438
Specificity	p70 S6 kinase β Polyclonal Antibody detects endogenous levels of p70 S6 kinase β protein.
Formulation	Liquid in PBS containing 50% glycerol, 0.5% BSA and 0.02% sodium azide.
Source	Polyclonal, Rabbit,IgG
Purification	The antibody was affinity-purified from rabbit antiserum by affinity-chromatography using epitope-specific immunogen.
Dilution	WB: 1/500 - 1/2000. IHC: 1/100 - 1/300. ELISA: 1/5000.. IF 1:50-200
Concentration	1 mg/ml
Purity	$\geq 90\%$
Storage Stability	-20°C/1 year
Synonyms	RPS6KB2; STK14B; Ribosomal protein S6 kinase beta-2; S6K-beta-2; S6K2; 70 kDa ribosomal protein S6 kinase 2; P70S6K2; p70-S6K 2; S6 kinase-related kinase; SRK; Serine/threonine-protein kinase 14B; p70 ribosomal S6 kinase beta; S6K-beta; p70
Observed Band	42kD
Cell Pathway	Cytoplasm. Nucleus.
Tissue Specificity	Brain,Epithelium,Lymph,
Function	catalytic activity:ATP + a protein = ADP + a phosphoprotein.,function:Phosphorylates specifically ribosomal protein S6.,PTM:Phosphorylated upon DNA damage, probably by ATM or ATR.,similarity:Belongs to the protein kinase superfamily.,similarity:Belongs to the protein kinase superfamily. AGC Ser/Thr protein kinase family. S6 kinase subfamily.,similarity:Contains 1 AGC-kinase C-terminal domain.,similarity:Contains 1 protein kinase domain.,

Nanjing BYabscience technology Co.,Ltd

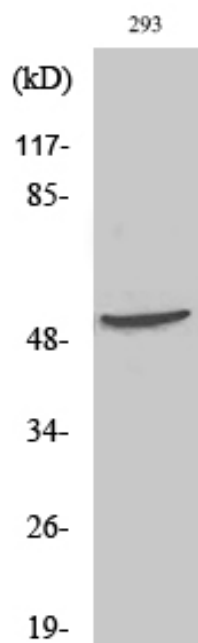


Background	ribosomal protein S6 kinase B2(RPS6KB2) Homo sapiens This gene encodes a member of the RSK (ribosomal S6 kinase) family of serine/threonine kinases. This kinase contains a kinase catalytic domain and phosphorylates the S6 ribosomal protein and eukaryotic translation initiation factor 4B (eIF4B). Phosphorylation of S6 leads to an increase in protein synthesis and cell proliferation. [provided by RefSeq, Jan 2015],
matters needing attention	Avoid repeated freezing and thawing!
Usage suggestions	This product can be used in immunological reaction related experiments. For more information, please consult technical personnel.

Products Images

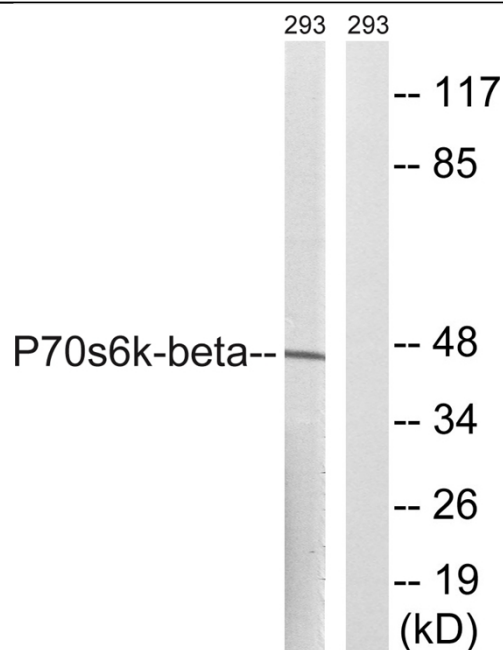


Western Blot analysis of various cells using p70 S6 kinase β Polyclonal Antibody

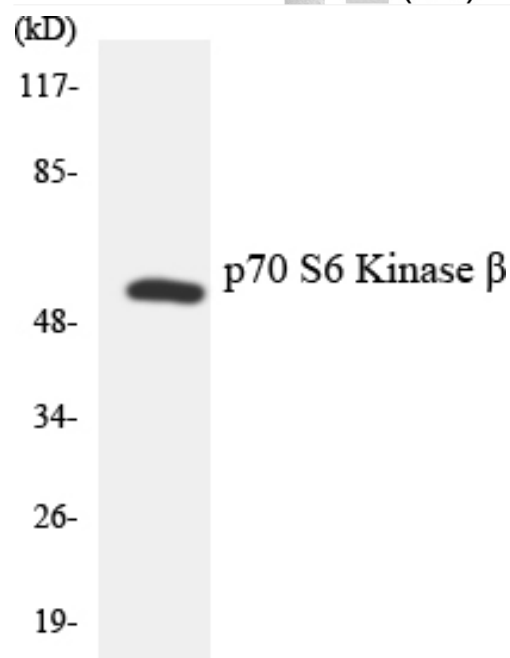


Western Blot analysis of 293 cells using p70 S6 kinase β Polyclonal Antibody

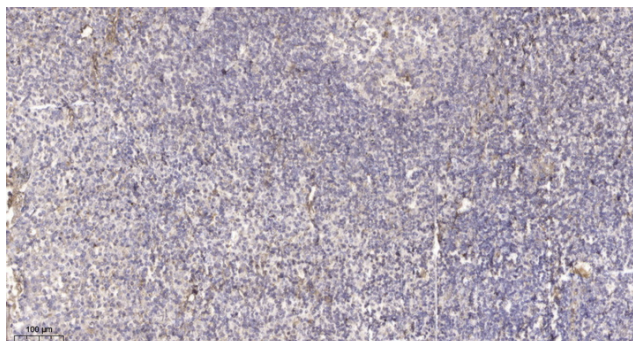
Nanjing BYabs science technology Co.,Ltd



Western blot analysis of lysates from 293 cells, using p70 S6 Kinase beta Antibody. The lane on the right is blocked with the synthesized peptide.



Western blot analysis of the lysates from HUVEC cells using p70 S6 Kinase β antibody.



Immunohistochemical analysis of paraffin-embedded human tonsil. 1, Antibody was diluted at 1:200 (4° overnight). 2, Tris-EDTA, pH 9.0 was used for antigen retrieval. 3, Secondary antibody was diluted at 1:200 (room temperature, 45 min).