



PDIK1L Polyclonal Antibody

Catalog No	BYab-14899
Isotype	IgG
Reactivity	Human;Mouse
Applications	WB;IHC;IF;ELISA
Gene Name	PDIK1L
Protein Name	Serine/threonine-protein kinase PDIK1L
Immunogen	The antiserum was produced against synthesized peptide derived from human PDIK1L. AA range:101-150
Specificity	PDIK1L Polyclonal Antibody detects endogenous levels of PDIK1L protein.
Formulation	Liquid in PBS containing 50% glycerol, 0.5% BSA and 0.02% sodium azide.
Source	Polyclonal, Rabbit,IgG
Purification	The antibody was affinity-purified from rabbit antiserum by affinity-chromatography using epitope-specific immunogen.
Dilution	WB: 1/500 - 1/2000. IHC: 1/100 - 1/300. ELISA: 1/40000.. IF 1:50-200
Concentration	1 mg/ml
Purity	≥90%
Storage Stability	-20°C/1 year
Synonyms	PDIK1L; CLIK1L; Serine/threonine-protein kinase PDIK1L; PDLIM1-interacting kinase 1-like
Observed Band	39kD
Cell Pathway	Nucleus .
Tissue Specificity	Expressed in liver, kidney, pancreas, spleen, thymus and prostate.
Function	catalytic activity:ATP + a protein = ADP + a phosphoprotein.,similarity:Belongs to the protein kinase superfamily. Ser/Thr protein kinase family.,similarity:Contains 1 protein kinase domain.,tissue specificity:Expressed in liver, kidney, pancreas, spleen, thymus and prostate.,
Background	catalytic activity:ATP + a protein = ADP + a phosphoprotein.,similarity:Belongs to the protein kinase superfamily. Ser/Thr protein kinase family.,similarity:Contains 1 protein kinase domain.,tissue specificity:Expressed in liver, kidney, pancreas, spleen, thymus and prostate.,

Nanjing BYabscience technology Co.,Ltd

网址: www.njbybio.com

官方热线: 025-5229-8998

监督电话: 15950492658



matters needing attention

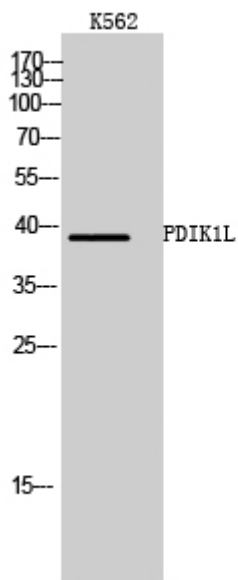
Avoid repeated freezing and thawing!

Usage suggestions

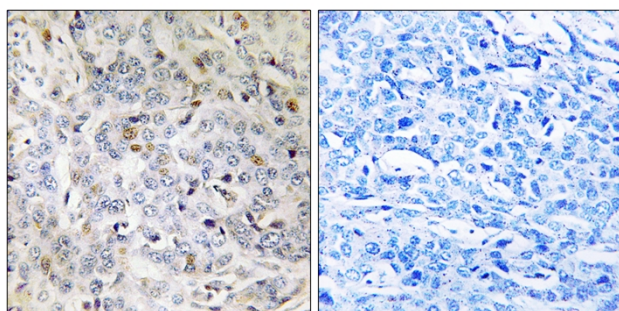
This product can be used in immunological reaction related experiments. For more information, please consult technical personnel.



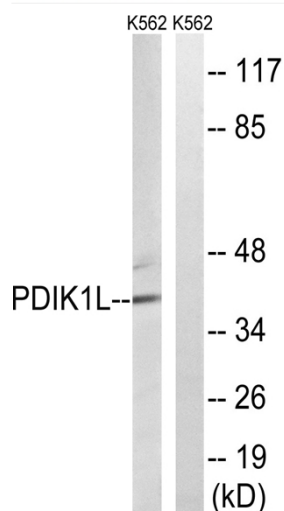
Products Images



Western Blot analysis of K562 cells using PDIK1L Polyclonal Antibody cells nucleus extracted by Minute TM Cytoplasmic and Nuclear Fractionation kit (SC-003, Invent biotech, MN, USA).



Immunohistochemistry analysis of paraffin-embedded human breast carcinoma tissue, using PDIK1L Antibody. The picture on the right is blocked with the synthesized peptide.



Western blot analysis of lysates from K562 cells, using PDIK1L Antibody. The lane on the right is blocked with the synthesized peptide.

Nanjing BYabs science technology Co.,Ltd

网址: www.njbybio.com

官方热线: 025-5229-8998

监督电话: 15950492658