



PFK-B Polyclonal Antibody

Catalog No	BYab-14906
Isotype	IgG
Reactivity	Human;Mouse;Rat
Applications	WB;IHC;IF;ELISA
Gene Name	PFKL
Protein Name	6-phosphofructokinase liver type
Immunogen	The antiserum was produced against synthesized peptide derived from human K6PL. AA range:691-740
Specificity	PFK-B Polyclonal Antibody detects endogenous levels of PFK-B protein.
Formulation	Liquid in PBS containing 50% glycerol, 0.5% BSA and 0.02% sodium azide.
Source	Polyclonal, Rabbit,IgG
Purification	The antibody was affinity-purified from rabbit antiserum by affinity-chromatography using epitope-specific immunogen.
Dilution	WB: 1/500 - 1/2000. IHC: 1/100 - 1/300. ELISA: 1/20000.. IF 1:50-200
Concentration	1 mg/ml
Purity	≥90%
Storage Stability	-20°C/1 year
Synonyms	PFKL; 6-phosphofructokinase; liver type; Phosphofructo-1-kinase isozyme B; PFK-B; Phosphofructokinase 1; Phosphohexokinase
Observed Band	85kD
Cell Pathway	Cytoplasm .
Tissue Specificity	Brain,Cervix,Colon,Human amygdala,Human retina,Kidney,Liver,Lung,Muscle,Pla
Function	catalytic activity:ATP + D-fructose 6-phosphate = ADP + D-fructose 1,6-bisphosphate.,cofactor:Magnesium.,enzyme regulation:Allosteric enzyme activated by ADP, AMP, or fructose bisphosphate and inhibited by ATP or citrate.,miscellaneous:In human PFK exists as a system of 3 types of subunits, PFKM (muscle), PFKL (liver) and PFKP (platelet) isoenzymes.,pathway:Carbohydrate degradation; glycolysis; D-glyceraldehyde 3-phosphate and glyceroone phosphate from D-glucose: step 3/4.,similarity:Belongs to the phosphofructokinase family. Two domains subfamily.,subunit:Tetramer. Muscle is M4, liver is L4, and red cell is M3L, M2L2, or ML3.,

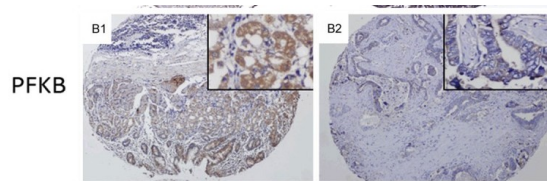
Nanjing BYabscience technology Co.,Ltd



Background	This gene encodes the liver (L) subunit of an enzyme that catalyzes the conversion of D-fructose 6-phosphate to D-fructose 1,6-bisphosphate, which is a key step in glucose metabolism (glycolysis). This enzyme is a tetramer that may be composed of different subunits encoded by distinct genes in different tissues. Alternative splicing results in multiple transcript variants. [provided by RefSeq, Mar 2014],
matters needing attention	Avoid repeated freezing and thawing!
Usage suggestions	This product can be used in immunological reaction related experiments. For more information, please consult technical personnel.

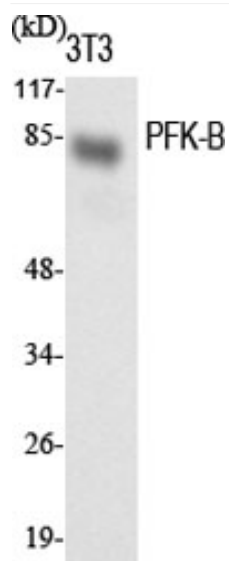


Products Images

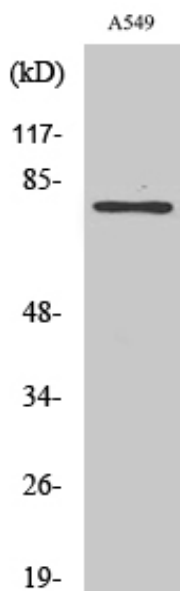


Gao, Yunshu, et al. "Overexpression of metabolic markers HK1 and PKM2 contributes to lymphatic metastasis and adverse prognosis in Chinese gastric cancer." *International journal of clinical and experimental pathology* 8.8 (2015): 9264.

Western Blot analysis of various cells using PFK-B Polyclonal Antibody diluted at 1:1000



Western Blot analysis of NIH-3T3 cells using PFK-B Polyclonal Antibody diluted at 1:1000

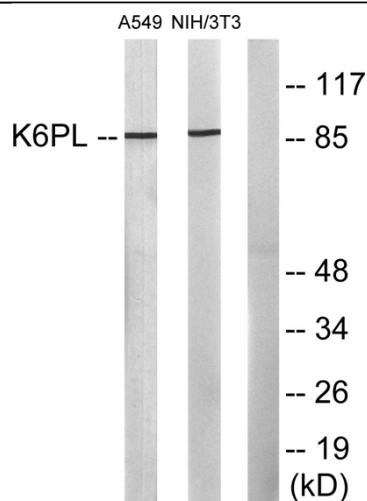


Nanjing BYabs science technology Co.,Ltd

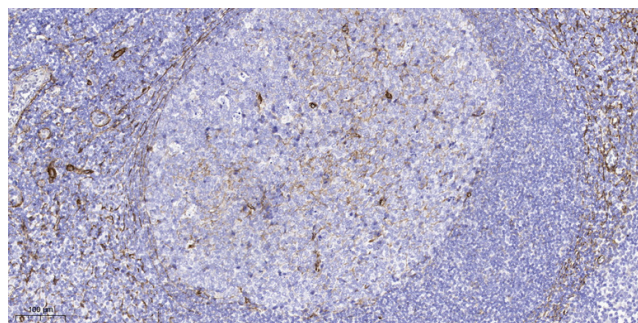
网址: www.njbybio.com

官方热线: 025-5229-8998

监督电话: 15950492658



Western blot analysis of lysates from A549 and NIH/3T3 cells, using K6PL Antibody. The lane on the right is blocked with the synthesized peptide.



Immunohistochemical analysis of paraffin-embedded human tonsil. 1, Tris-EDTA, pH9.0 was used for antigen retrieval. 2 Antibody was diluted at 1:200 (4° overnight). 3, Secondary antibody was diluted at 1:200 (room temperature, 45min).