



PHKG1 Polyclonal Antibody

Catalog No	BYab-14911
Isotype	IgG
Reactivity	Human;Rat;Mouse;
Applications	WB;IHC
Gene Name	PHKG1
Protein Name	Phosphorylase b kinase gamma catalytic chain skeletal muscle isoform
Immunogen	The antiserum was produced against synthesized peptide derived from human PHKG1. AA range:241-290
Specificity	PHKG1 Polyclonal Antibody detects endogenous levels of PHKG1 protein.
Formulation	Liquid in PBS containing 50% glycerol, 0.5% BSA and 0.02% sodium azide.
Source	Polyclonal, Rabbit,IgG
Purification	The antibody was affinity-purified from rabbit antiserum by affinity-chromatography using epitope-specific immunogen.
Dilution	WB 1:500-2000;IHC-p 1:50-300
Concentration	1 mg/ml
Purity	≥90%
Storage Stability	-20°C/1 year
Synonyms	PHKG1; PHKG; Phosphorylase b kinase gamma catalytic chain; skeletal muscle isoform; Phosphorylase kinase subunit gamma-1
Observed Band	45kD
Cell Pathway	cytosol,phosphorylase kinase complex,
Tissue Specificity	PCR rescued clones,Salivary gland,Skeletal muscle,
Function	catalytic activity:2 ATP + phosphorylase b = 2 ADP + phosphorylase a.,domain:The two calmodulin-binding domains appear to act in concert to bind a single molecule of calmodulin and are pseudosubstrate/autoinhibitory domains.,function:Phosphorylase b kinase catalyzes the phosphorylation of serine in certain substrates, including troponin I.,similarity:Belongs to the protein kinase superfamily.,similarity:Belongs to the protein kinase superfamily. CAMK Ser/Thr protein kinase family.,similarity:Contains 1 protein kinase domain.,subunit:Polymer of 16 chains, four each of alpha, beta, gamma, and delta. Alpha and beta are regulatory chains, gamma is the catalytic chain, and delta is calmodulin.,

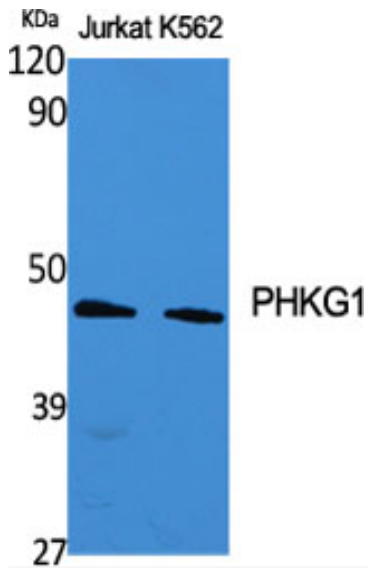
Nanjing BYabscience technology Co.,Ltd



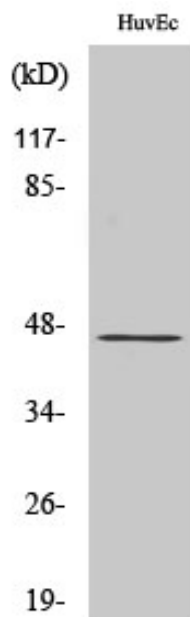
Background	This gene is a member of the Ser/Thr protein kinase family and encodes a protein with one protein kinase domain and two calmodulin-binding domains. This protein is the catalytic member of a 16 subunit protein kinase complex which contains equimolar ratios of 4 subunit types. The complex is a crucial glycogenolytic regulatory enzyme. This gene has two pseudogenes at chromosome 7q11.21 and one at chromosome 11p11.12. Multiple transcript variants encoding different isoforms have been found for this gene. [provided by RefSeq, May 2012],
matters needing attention	Avoid repeated freezing and thawing!
Usage suggestions	This product can be used in immunological reaction related experiments. For more information, please consult technical personnel.



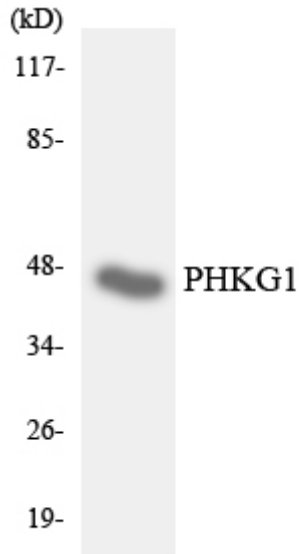
Products Images



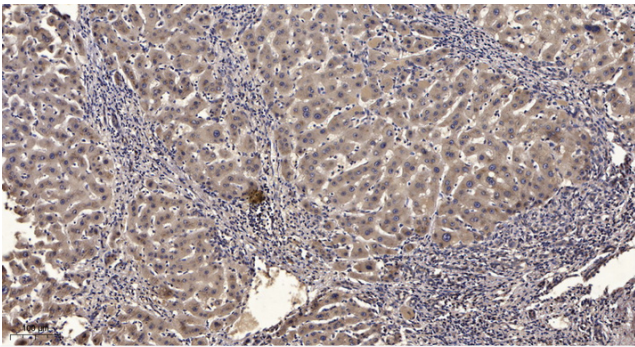
Western Blot analysis of various cells using PHKG1 Polyclonal Antibody



Western Blot analysis of HepG2 cells using PHKG1 Polyclonal Antibody



Western blot analysis of the lysates from HUVEC cells using PHKG1 antibody.



Immunohistochemical analysis of paraffin-embedded human liver cancer. 1, Antibody was diluted at 1:200 (4° overnight). 2, Tris-EDTA, pH 9.0 was used for antigen retrieval. 3, Secondary antibody was diluted at 1:200 (room temperature, 45 min).