



PIP5KIII Polyclonal Antibody

Catalog No	BYab-14920
Isotype	IgG
Reactivity	Human;Mouse
Applications	WB;IHC
Gene Name	PIKFYVE
Protein Name	1-phosphatidylinositol 3-phosphate 5-kinase
Immunogen	The antiserum was produced against synthesized peptide derived from human PIP5K. AA range:71-120
Specificity	PIP5KIII Polyclonal Antibody detects endogenous levels of PIP5KIII protein.
Formulation	Liquid in PBS containing 50% glycerol, 0.5% BSA and 0.02% sodium azide.
Source	Polyclonal, Rabbit,IgG
Purification	The antibody was affinity-purified from rabbit antiserum by affinity-chromatography using epitope-specific immunogen.
Dilution	WB 1:500-2000;IHC-p 1:50-300
Concentration	1 mg/ml
Purity	≥90%
Storage Stability	-20°C/1 year
Synonyms	PIKFYVE; KIAA0981; PIP5K3; 1-phosphatidylinositol 3-phosphate 5-kinase; Phosphatidylinositol 3-phosphate 5-kinase; FYVE finger-containing phosphoinositide kinase; PIKfyve; Phosphatidylinositol 3-phosphate 5-kinase type III; PIPkin-III; Type
Observed Band	237kD
Cell Pathway	Endosome membrane ; Peripheral membrane protein . Early endosome membrane ; Peripheral membrane protein. Cytoplasmic vesicle, phagosome membrane ; Peripheral membrane protein . Late endosome membrane ; Peripheral membrane protein . Mainly associated with membranes of the late endocytic pathway. .
Tissue Specificity	Brain,Epithelium,PCR rescued clones,T-cell,
Function	catalytic activity:ATP + 1-phosphatidyl-1D-myo-inositol 4-phosphate = ADP + 1-phosphatidyl-1D-myo-inositol 4,5-bisphosphate.,disease:Defects in PIKFYVE are the cause of corneal fleck dystrophy (CFD) [MIM:121850]. CFD is an autosomal dominant disorder of the cornea characterized by numerous small

Nanjing BYabs science technology Co.,Ltd



white flecks scattered in all levels of the stroma. Although CFD may occasionally cause mild photophobia, patients are typically asymptomatic and have normal vision. function: Supports the intracellular PIP pool and to a lesser extent, the PI 4,5-P(2) pool. It generates PIP from PI and, to a lesser extent, PI 4,5-P(2) from PI 4-P. There are indications that it phosphorylates the D-5 rather than the D-4 position. Has a role in endosome-related membrane trafficking. similarity: Contains 1 DEP domain. similarity: Contains 1 FYVE-type zinc finger. similarity: Contains 1 PI5K domain. subcellular location:

Background

Phosphorylated derivatives of phosphatidylinositol (PtdIns) regulate cytoskeletal functions, membrane trafficking, and receptor signaling by recruiting protein complexes to cell- and endosomal-membranes. Humans have multiple PtdIns proteins that differ by the degree and position of phosphorylation of the inositol ring. This gene encodes an enzyme (PIKfyve; also known as phosphatidylinositol-3-phosphate 5-kinase type III or PIPKIII) that phosphorylates the D-5 position in PtdIns and phosphatidylinositol-3-phosphate (PtdIns3P) to make PtdIns5P and PtdIns(3,5)biphosphate. The D-5 position also can be phosphorylated by type I PtdIns4P-5-kinases (PIP5Ks) that are encoded by distinct genes and preferentially phosphorylate D-4 phosphorylated PtdIns. In contrast, PIKfyve preferentially phosphorylates D-3 phosphorylated PtdIns. In addition to being a lipid kinase, PIKf

matters needing attention

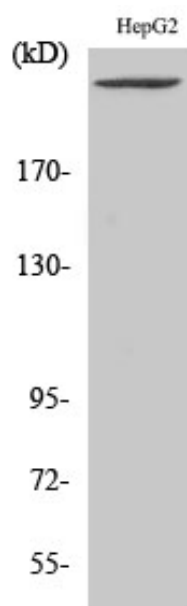
Avoid repeated freezing and thawing!

Usage suggestions

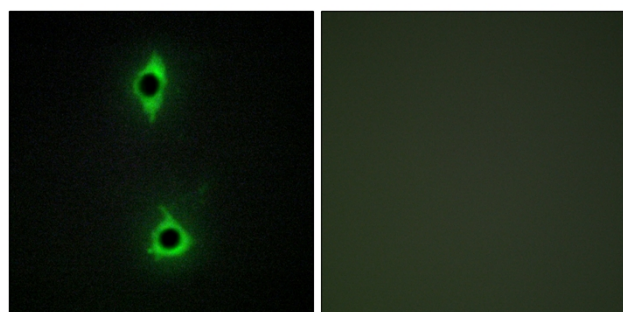
This product can be used in immunological reaction related experiments. For more information, please consult technical personnel.



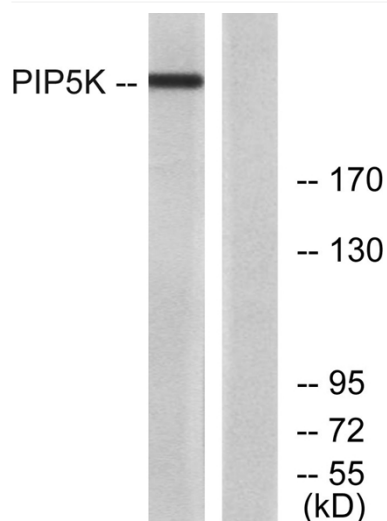
Products Images



Western Blot analysis of various cells using PIP5KIII Polyclonal Antibody



Immunofluorescence analysis of COS7 cells, using PIP5K Antibody. The picture on the right is blocked with the synthesized peptide.



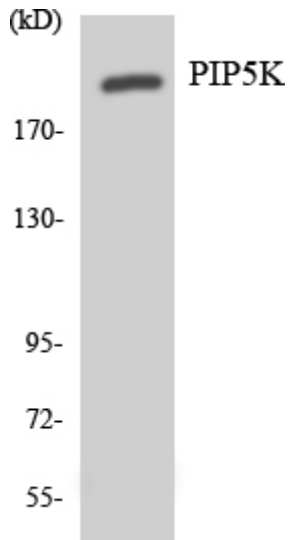
Western blot analysis of lysates from HepG2 cells, using PIP5K Antibody. The lane on the right is blocked with the synthesized peptide.

Nanjing BYabscience technology Co.,Ltd

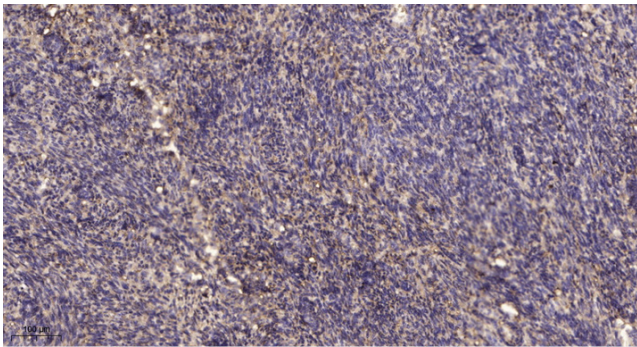
网址: www.njbybio.com

官方热线: 025-5229-8998

监督电话: 15950492658



Western blot analysis of the lysates from Jurkat cells using PIP5K antibody.



Immunohistochemical analysis of paraffin-embedded human uterus. 1, Antibody was diluted at 1:200(4° overnight). 2, Tris-EDTA,pH9.0 was used for antigen retrieval. 3,Secondary antibody was diluted at 1:200(room temperature, 45min).