



# PP4R2 Polyclonal Antibody

<b>Catalog No</b>	BYab-14954
<b>Isotype</b>	IgG
<b>Reactivity</b>	Human;Monkey
<b>Applications</b>	WB;IHC;IF;ELISA
<b>Gene Name</b>	PPP4R2
<b>Protein Name</b>	Serine/threonine-protein phosphatase 4 regulatory subunit 2
<b>Immunogen</b>	The antiserum was produced against synthesized peptide derived from human PPP4R2. AA range:171-220
<b>Specificity</b>	PP4R2 Polyclonal Antibody detects endogenous levels of PP4R2 protein.
<b>Formulation</b>	Liquid in PBS containing 50% glycerol, 0.5% BSA and 0.02% sodium azide.
<b>Source</b>	Polyclonal, Rabbit,IgG
<b>Purification</b>	The antibody was affinity-purified from rabbit antiserum by affinity-chromatography using epitope-specific immunogen.
<b>Dilution</b>	WB: 1/500 - 1/2000. IHC: 1/100 - 1/300. ELISA: 1/5000.. IF 1:50-200
<b>Concentration</b>	1 mg/ml
<b>Purity</b>	≥90%
<b>Storage Stability</b>	-20°C/1 year
<b>Synonyms</b>	PPP4R2; SBB157; Serine/threonine-protein phosphatase 4 regulatory subunit 2
<b>Observed Band</b>	50kD
<b>Cell Pathway</b>	Cytoplasm, cytoskeleton, microtubule organizing center, centrosome. Nucleus. Ionizing radiation induces relocalization to nuclear foci and colocalization with RPA2.
<b>Tissue Specificity</b>	Widely expressed.
<b>Function</b>	function:Regulatory subunit of serine/threonine-protein phosphatase 4 (PP4). May regulate the activity of PPP4C at centrosomal microtubule organizing centers. Its interaction with the SMN complex leads to enhance the temporal localization of snRNPs, suggesting a role of PPP4C in maturation of spliceosomal snRNPs. The PPP4C-PPP4R2-PPP4R3A PP4 complex specifically dephosphorylates H2AFX phosphorylated on 'Ser-140' (gamma-H2AFX) generated during DNA replication and required for DNA DSB repair.,sequence caution:Contaminating sequence. Potential poly-A sequence.,similarity:Belongs to the PPP4R2 family.,subunit:Serine/threonine-protein phosphatase 4 (PP4) occurs in different assemblies of the catalytic and one or more regulatory subunits. Component of

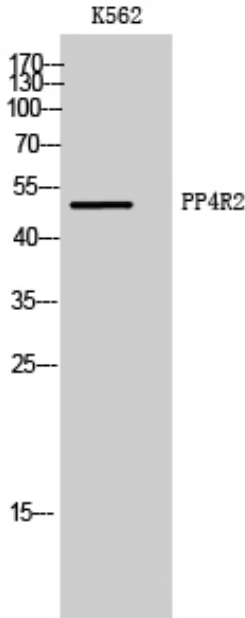
**Nanjing BYabscience technology Co.,Ltd**



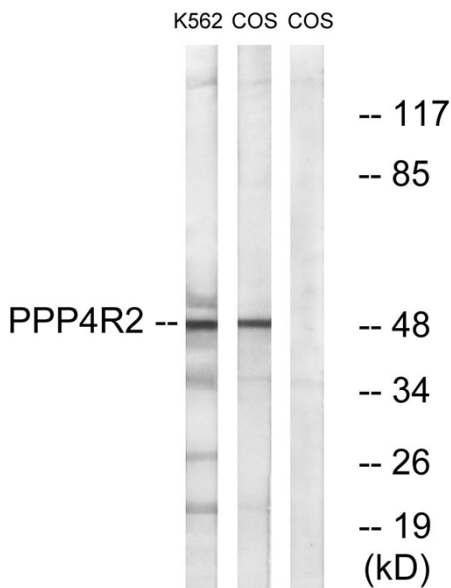
	the PP4 complexes PPP4C-PPP4R2, PPP4C-PPP4R2-PPP4R3A and PPP4C-PPP4R2-PPP4R3B. The PPP4C-PPP4R2 complex appears to be a tetramer composed of 2 m
<b>Background</b>	The protein encoded by this gene is a regulatory subunit of the serine/threonine-protein phosphatase 4 complex. In addition to being required for efficient DNA double strand break repair, this complex plays a role in organization of microtubules at centrosomes and processing of spliceosomal snRNPs. Several transcript variants encoding different isoforms have been found for this gene. [provided by RefSeq, Dec 2015],
<b>matters needing attention</b>	Avoid repeated freezing and thawing!
<b>Usage suggestions</b>	This product can be used in immunological reaction related experiments. For more information, please consult technical personnel.



## Products Images



Western Blot analysis of K562 cells using PP4R2 Polyclonal Antibody



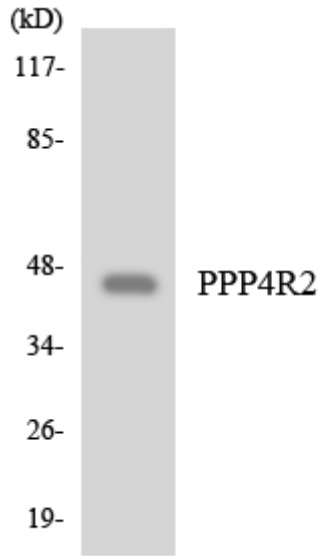
Western blot analysis of lysates from K562 and COS7 cells, using PPP4R2 Antibody. The lane on the right is blocked with the synthesized peptide.

Nanjing BYabs science technology Co.,Ltd

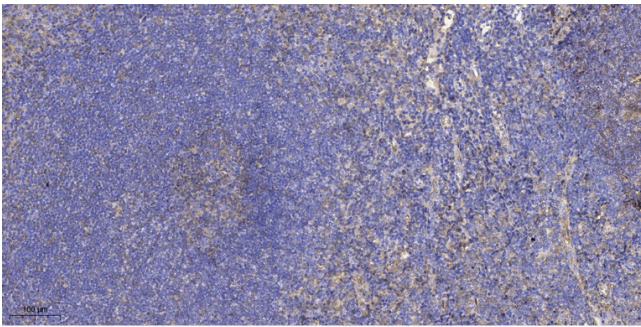
网址: [www.njbybio.com](http://www.njbybio.com)

官方热线: 025-5229-8998

监督电话: 15950492658



Western blot analysis of the lysates from COLO205 cells using PPP4R2 antibody.



Immunohistochemical analysis of paraffin-embedded human tonsil. 1, Antibody was diluted at 1:200(4° overnight). 2, Tris-EDTA,pH9.0 was used for antigen retrieval. 3,Secondary antibody was diluted at 1:200(room temperature, 30min).