



PPP2R3C Polyclonal Antibody

Catalog No	BYab-14956
Isotype	IgG
Reactivity	Human;Mouse;Rat
Applications	WB;ELISA;IHC
Gene Name	PPP2R3C
Protein Name	Serine/threonine-protein phosphatase 2A regulatory subunit B" subunit gamma
Immunogen	The antiserum was produced against synthesized peptide derived from human PPP2R3C. AA range:165-214
Specificity	PPP2R3C Polyclonal Antibody detects endogenous levels of PPP2R3C protein.
Formulation	Liquid in PBS containing 50% glycerol, 0.5% BSA and 0.02% sodium azide.
Source	Polyclonal, Rabbit,IgG
Purification	The antibody was affinity-purified from rabbit antiserum by affinity-chromatography using epitope-specific immunogen.
Dilution	WB 1:500-2000;IHC-p 1:50-300; ELISA 2000-20000
Concentration	1 mg/ml
Purity	≥90%
Storage Stability	-20°C/1 year
Synonyms	PPP2R3C; C14orf10; G5PR; Serine/threonine-protein phosphatase 2A regulatory subunit B" subunit gamma; Protein phosphatase subunit G5PR; Rhabdomyosarcoma antigen MU-RMS-40.6A/6C
Observed Band	55kD
Cell Pathway	Nucleus . Cytoplasm . Excluded from the nucleoli. Localization is cell cycle-dependent. Localizes to the cytoplasm during cytokinesis. .
Tissue Specificity	Ubiquitously expressed in brain and other tissues.
Function	developmental stage:Expressed in fetal brain.,function:May regulate MCM3AP phosphorylation through phosphatase recruitment. May play a role in the activation-induced cell death of B-cells.,similarity:Contains 2 EF-hand domains.,subcellular location:Excluded from the nucleoli. Localization is cell cycle-dependent. Localizes to the cytoplasm during cytokinesis.,subunit:Interacts with MCM3AP/GANP (By similarity). Interacts with PPP5C, and the phosphatase 2A core enzyme composed of the PPP2CA catalytic subunit and the constant regulatory subunit PPP2R1A.,tissue specificity:Ubiquitously expressed in brain and other tissues.,

Nanjing BYabscience technology Co.,Ltd



Background

This gene encodes a regulatory subunit of the serine/threonine phosphatase, protein phosphatase 2. This protein is localized to both nuclear and cytoplasmic regions depending on cell cycle phase. Homozygous conditional knockout mice for this gene exhibit reduced numbers and impaired proliferation of immune system B cells. This protein may regulate the expression of the P-glycoprotein ATP-binding cassette transporter through its phosphatase activity. Alternative splicing results in multiple transcript variants. [provided by RefSeq, Feb 2015],

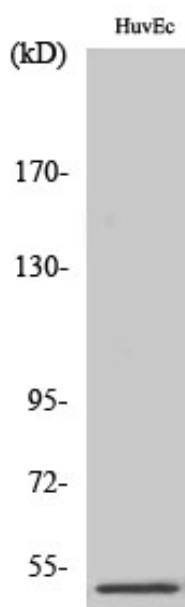
matters needing attention

Avoid repeated freezing and thawing!

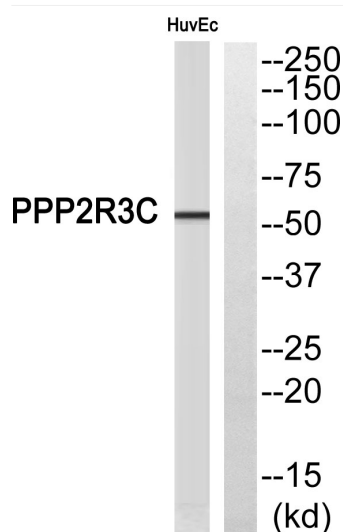
Usage suggestions

This product can be used in immunological reaction related experiments. For more information, please consult technical personnel.

Products Images

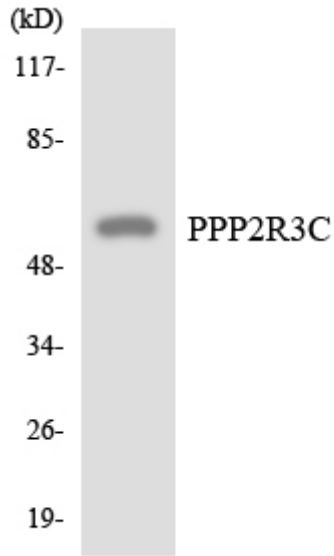


Western Blot analysis of various cells using PPP2R3C Polyclonal Antibody

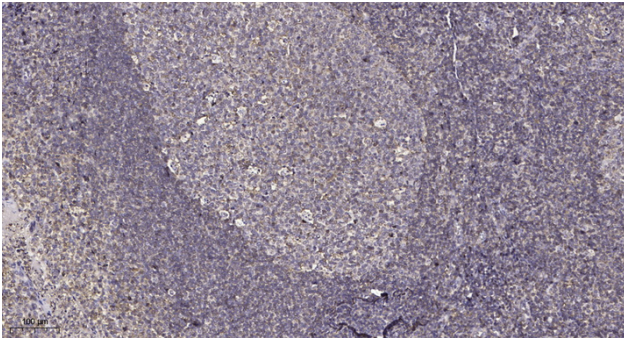


Western blot analysis of PPP2R3C Antibody. The lane on the right is blocked with the PPP2R3C peptide.

Nanjing BYabs science technology Co.,Ltd



Western blot analysis of the lysates from HepG2 cells using PPP2R3C antibody.



Immunohistochemical analysis of paraffin-embedded human tonsil. 1, Antibody was diluted at 1:200(4° overnight). 2, Tris-EDTA,pH9.0 was used for antigen retrieval. 3,Secondary antibody was diluted at 1:200(room temperature, 45min).