



PTPζ Polyclonal Antibody

Catalog No	BYab-14968
Isotype	IgG
Reactivity	Human;Mouse;Rat
Applications	WB;ELISA;IHC
Gene Name	PTPRZ1
Protein Name	Receptor-type tyrosine-protein phosphatase zeta
Immunogen	The antiserum was produced against synthesized peptide derived from human PTPRZ1. AA range:122-171
Specificity	PTPζ Polyclonal Antibody detects endogenous levels of PTPζ protein.
Formulation	Liquid in PBS containing 50% glycerol, 0.5% BSA and 0.02% sodium azide.
Source	Polyclonal, Rabbit,IgG
Purification	The antibody was affinity-purified from rabbit antiserum by affinity-chromatography using epitope-specific immunogen.
Dilution	WB 1:500-2000;IHC-p 1:50-300; ELISA 2000-20000
Concentration	1 mg/ml
Purity	≥90%
Storage Stability	-20°C/1 year
Synonyms	PTPRZ1; HTPZP2; PTPRZ; PTPRZ2; PTPZ; Receptor-type tyrosine-protein phosphatase zeta; R-PTP-zeta; Protein-tyrosine phosphatase receptor type Z polypeptide 1; Protein-tyrosine phosphatase receptor type Z polypeptide 2; R-PTP-zeta-2
Observed Band	250kD
Cell Pathway	[Isoform 1]: Cell membrane; Single-pass type I membrane protein. Secreted . A secreted form is apparently generated by shedding of the extracellular domain. . ; [Isoform 2]: Secreted .
Tissue Specificity	Specifically expressed in the central nervous system, where it is localized in the Purkinje cell layer of the cerebellum, the dentate gyrus, and the subependymal layer of the anterior horn of the lateral ventricle. Developmentally regulated in the brain.
Function	catalytic activity:Protein tyrosine phosphate + H(2)O = protein tyrosine + phosphate.,caution:PubMed:8387522 and PubMed:2170109 have termed this protein RPTPase beta.,function:May be involved in the regulation of specific developmental processes in the CNS.,sequence caution:Contaminating

Nanjing BYabscience technology Co.,Ltd



sequence. The N-terminus may be contaminated with vector sequence.,similarity:Belongs to the protein-tyrosine phosphatase family. Receptor class 5 subfamily.,similarity:Contains 1 alpha-carbonic anhydrase domain.,similarity:Contains 1 fibronectin type-III domain.,similarity:Contains 2 tyrosine-protein phosphatase domains.,subunit:The carbonic-anhydrase like domain binds to contactin.,tissue specificity:Specifically expressed in the central nervous system, where it is localized in the Purkinje cell layer of the cerebellum, the dentate gyrus, and the subependymal layer of the anterior horn of the lateral v

Background

This gene encodes a member of the receptor protein tyrosine phosphatase family. Expression of this gene is restricted to the central nervous system (CNS), and it may be involved in the regulation of specific developmental processes in the CNS. Alternatively spliced transcript variants encoding different isoforms have been described for this gene. [provided by RefSeq, May 2011],

matters needing attention

Avoid repeated freezing and thawing!

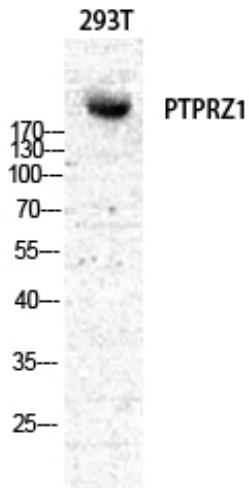
Usage suggestions

This product can be used in immunological reaction related experiments. For more information, please consult technical personnel.

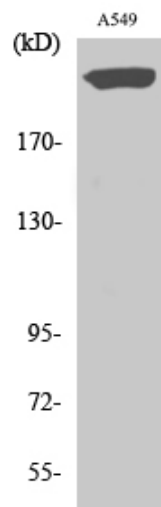


Products Images

Western Blot analysis of various cells using PTP ζ
Polyclonal Antibody diluted at 1:500



Western Blot analysis of A549 cells using PTP ζ
Polyclonal Antibody diluted at 1:500

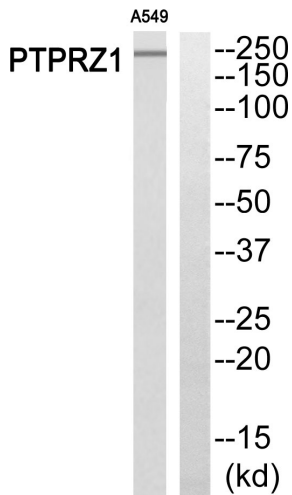


Nanjing BYabs science technology Co.,Ltd

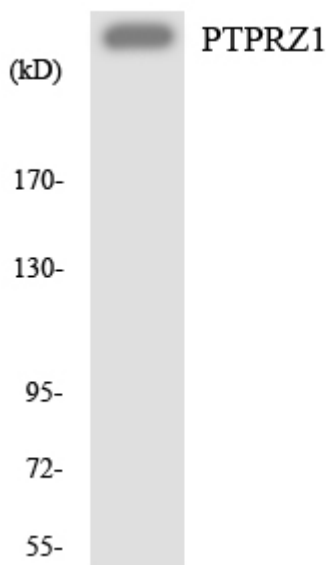
网址: www.njbybio.com

官方热线: 025-5229-8998

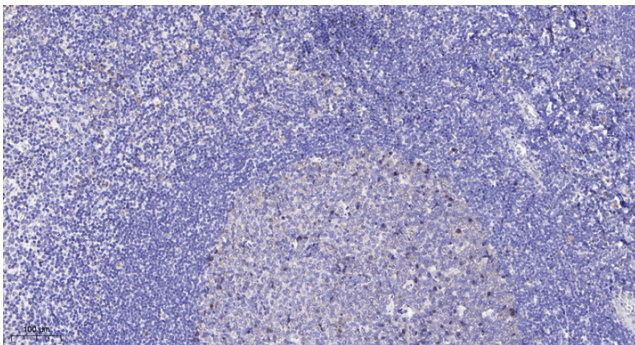
监督电话: 15950492658



Western blot analysis of PTPRZ1 Antibody. The lane on the right is blocked with the PTPRZ1 peptide.



Western blot analysis of the lysates from HeLa cells using PTPRZ1 antibody.



Immunohistochemical analysis of paraffin-embedded human tonsil. 1, Antibody was diluted at 1:200(4° overnight). 2, Tris-EDTA,pH9.0 was used for antigen retrieval. 3,Secondary antibody was diluted at 1:200(room temperature, 45min).