



RAGE Polyclonal Antibody

| | |
|---------------------------|----------------------------------------------------------------------------------------------------------------------------------------------------------------------------------------------------------------------------------------------------------------------------------------------------------------------------------------------------------------------------------------------------------------------------------------------------------------------------------------------------------------------------------------------------------------------------------------------|
| Catalog No | BYab-14974 |
| Isotype | IgG |
| Reactivity | Human;Rat;Mouse; |
| Applications | WB;IHC;IF;ELISA |
| Gene Name | MOK |
| Protein Name | MAPK/MAK/MRK overlapping kinase |
| Immunogen | The antiserum was produced against synthesized peptide derived from human MOK. AA range:261-310 |
| Specificity | RAGE Polyclonal Antibody detects endogenous levels of RAGE protein. |
| Formulation | Liquid in PBS containing 50% glycerol, 0.5% BSA and 0.02% sodium azide. |
| Source | Polyclonal, Rabbit,IgG |
| Purification | The antibody was affinity-purified from rabbit antiserum by affinity-chromatography using epitope-specific immunogen. |
| Dilution | Western Blot: 1/500 - 1/2000. Immunohistochemistry: 1/100 - 1/300. Immunofluorescence: 1/200 - 1/1000. ELISA: 1/5000. Not yet tested in other applications. |
| Concentration | 1 mg/ml |
| Purity | ≥90% |
| Storage Stability | -20°C/1 year |
| Synonyms | MOK; RAGE; RAGE1; MAPK/MAK/MRK overlapping kinase; MOK protein kinase; Renal tumor antigen 1; RAGE-1 |
| Observed Band | 48kD |
| Cell Pathway | Cytoplasm . Cell projection, cilium . Nucleus . |
| Tissue Specificity | Expressed in heart, brain, lung, kidney, and pancreas, and at very low levels in placenta, liver and skeletal muscle. Detected in retina. |
| Function | catalytic activity:ATP + a protein = ADP + a phosphoprotein.,enzyme regulation:Phosphorylation appears to increase the enzymatic activity.,function:Able to phosphorylate several exogenous substrates and to undergo autophosphorylation.,PTM:Autophosphorylated.,similarity:Belongs to the protein kinase superfamily. CMGC Ser/Thr protein kinase family. CDC2/CDKX subfamily.,similarity:Contains 1 protein kinase domain.,tissue specificity:Expressed in heart, brain, lung, kidney, and pancreas, and at very low levels in placenta, liver and skeletal muscle. Detected in retina., |

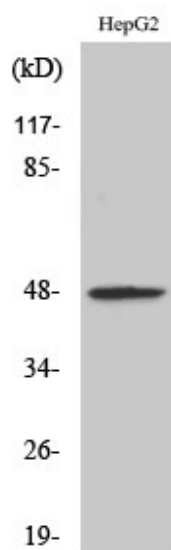
Nanjing BYabscience technology Co.,Ltd



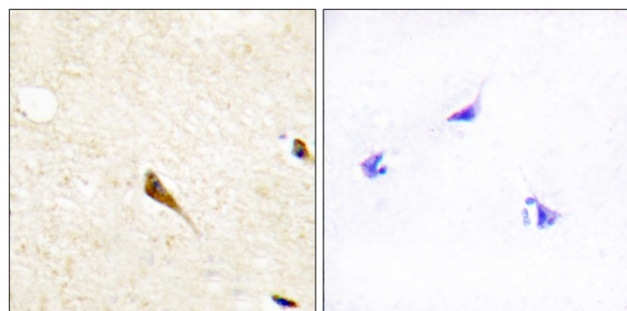
| | |
|---------------------------|-----------------------------------------------------------------------------------------------------------------------------------------------------------------------------------------------------------------------------------------------------------------------------------------------------------------------------------------------------------------------------------------------------------------------------------------------------------------------------------------------------------------------------|
| Background | MOK protein kinase(MOK) Homo sapiens This gene belongs to the MAP kinase superfamily. The gene was found to be regulated by caudal type transcription factor 2 (Cdx2) protein. The encoded protein, which is localized to epithelial cells in the intestinal crypt, may play a role in growth arrest and differentiation of cells of upper crypt and lower villus regions. Multiple alternatively spliced transcript variants encoding different isoforms have been observed for this gene. [provided by RefSeq, Dec 2012], |
| matters needing attention | Avoid repeated freezing and thawing! |
| Usage suggestions | This product can be used in immunological reaction related experiments. For more information, please consult technical personnel. |



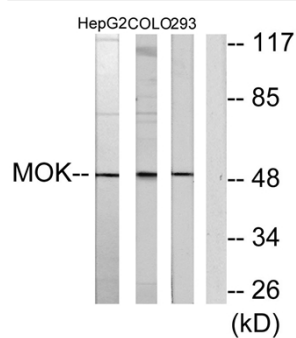
Products Images



Western Blot analysis of various cells using RAGE Polyclonal Antibody



Immunohistochemistry analysis of paraffin-embedded human brain tissue, using MOK Antibody. The picture on the right is blocked with the synthesized peptide.



Western blot analysis of lysates from HepG2, COLO205, and 293 cells, using MOK Antibody. The lane on the right is blocked with the synthesized peptide.

Nanjing BYabs science technology Co.,Ltd

网址: www.njbybio.com

官方热线: 025-5229-8998

监督电话: 15950492658