



SgK269 Polyclonal Antibody

Catalog No	BYab-14986
Isotype	IgG
Reactivity	Human;Rat;Mouse;
Applications	WB;IHC
Gene Name	PEAK1
Protein Name	Pseudopodium-enriched atypical kinase 1
Immunogen	The antiserum was produced against synthesized peptide derived from human SGK269. AA range:111-160
Specificity	SgK269 Polyclonal Antibody detects endogenous levels of SgK269 protein.
Formulation	Liquid in PBS containing 50% glycerol, 0.5% BSA and 0.02% sodium azide.
Source	Polyclonal, Rabbit,IgG
Purification	The antibody was affinity-purified from rabbit antiserum by affinity-chromatography using epitope-specific immunogen.
Dilution	WB 1:500-2000;IHC-p 1:50-300
Concentration	1 mg/ml
Purity	≥90%
Storage Stability	-20°C/1 year
Synonyms	PEAK1; KIAA2002; Pseudopodium-enriched atypical kinase 1; Sugen kinase 269; Tyrosine-protein kinase SgK269
Observed Band	195kD
Cell Pathway	Cytoplasm, cytoskeleton . Cell junction, focal adhesion . Colocalizes with F-actin in serum-rich medium (PubMed:20534451). Actin colocalization is reduced during serum starvation (PubMed:20534451). .
Tissue Specificity	Brain,Epithelium,Lung,Mesangial cell,Smooth muscle,Spleen,
Function	catalytic activity:ATP + a [protein]-L-tyrosine = ADP + a [protein]-L-tyrosine phosphate.,similarity:Belongs to the protein kinase superfamily.,similarity:Contains 1 protein kinase domain.,
Background	This gene encodes a non-receptor tyrosine kinase that is a member of the new kinase family three (NFK3) family. In migrating cells, the encoded protein is associated with the actin cytoskeleton and focal adhesions and promotes developing focal adhesion elongation. This protein may play a role in the regulation of cell migration, proliferation and cancer metastasis. [provided by

Nanjing BYabscience technology Co.,Ltd



RefSeq, Mar 2014],

**matters needing
attention**

Avoid repeated freezing and thawing!

Usage suggestions

This product can be used in immunological reaction related experiments. For more information, please consult technical personnel.

Nanjing BYabscience technology Co.,Ltd

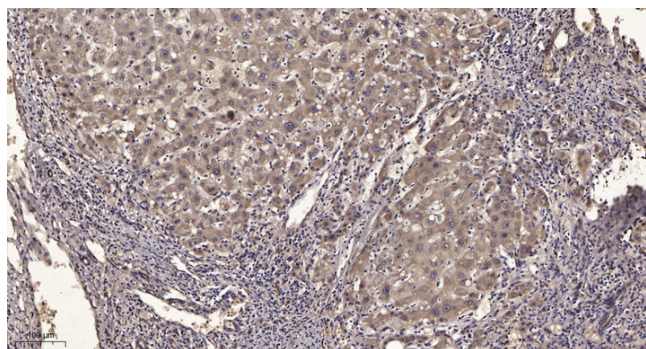
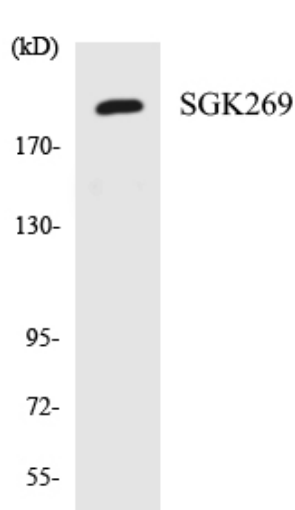
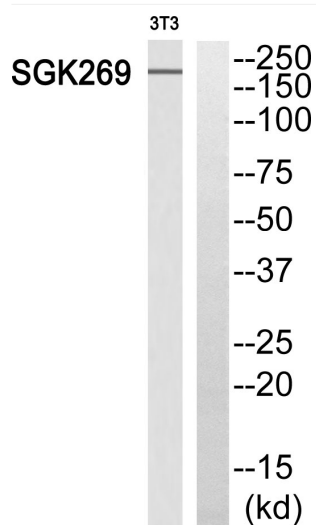
网址: www.njbybio.com

官方热线: 025-5229-8998

监督电话: 15950492658



Products Images



Immunohistochemical analysis of paraffin-embedded human liver cancer. 1, Antibody was diluted at 1:200(4° overnight). 2, Tris-EDTA,pH9.0 was used for antigen retrieval. 3,Secondary antibody was diluted at 1:200(room temperature, 45min).