



ALPP/ALPPL2 Polyclonal Antibody

Catalog No	BYab-15047
Isotype	IgG
Reactivity	Human;Mouse
Applications	WB;ELISA
Gene Name	ALPP/ALPPL2
Protein Name	Alkaline phosphatase, placental type/Alkaline phosphatase, placental-like
Immunogen	The antiserum was produced against synthesized peptide derived from the N-terminal region of human ALPP/ALPPL2. AA range:1-50
Specificity	ALPP/ALPPL2 Polyclonal Antibody detects endogenous levels of ALPP/ALPPL2 protein.
Formulation	Liquid in PBS containing 50% glycerol, 0.5% BSA and 0.02% sodium azide.
Source	Polyclonal, Rabbit,IgG
Purification	The antibody was affinity-purified from rabbit antiserum by affinity-chromatography using epitope-specific immunogen.
Dilution	Western Blot: 1/500 - 1/2000. ELISA: 1/20000. Not yet tested in other applications.
Concentration	1 mg/ml
Purity	≥90%
Storage Stability	-20°C/1 year
Synonyms	ALPP; PLAP; Alkaline phosphatase, placental type; Alkaline phosphatase Regan isozyme; Placental alkaline phosphatase 1; PLAP-1; ALPPL2; ALPPL; Alkaline phosphatase, placental-likeALP-1; Alkaline phosphatase Nagao isozyme; Germ cell alkaline phosphatase; GCAP; Placental alkaline phosphatase-like; PLAP-like
Observed Band	60kD
Cell Pathway	Cell membrane; Lipid-anchor, GPI-anchor .
Tissue Specificity	Detected in placenta (at protein level).
Function	catalytic activity:A phosphate monoester + H(2)O = an alcohol + phosphate.;cofactor:Binds 1 magnesium ion.;cofactor:Binds 2 zinc ions.;miscellaneous:In most mammals there are four different isozymes: placental, placental-like, intestinal and tissue non-specific (liver/bone/kidney).;online information:Alkaline phosphatase entry.polymorphism:Placental ALP is highly polymorphic, there are at least three common alleles.;similarity:Belongs to the alkaline phosphatase

Nanjing BYabs science technology Co.,Ltd



family.,subunit:Homodimer.,

Background

The protein encoded by this gene is an alkaline phosphatase, a metalloenzyme that catalyzes the hydrolysis of phosphoric acid monoesters. It belongs to a multigene family composed of four alkaline phosphatase isoenzymes. The enzyme functions as a homodimer and has a catalytic site containing one magnesium and two zinc ions, which are required for its enzymatic function. The protein is primarily expressed in placental and endometrial tissue; however, strong ectopic expression has been detected in ovarian adenocarcinoma, serous cystadenocarcinoma, and other ovarian cancer cells. [provided by RefSeq, Jan 2015],

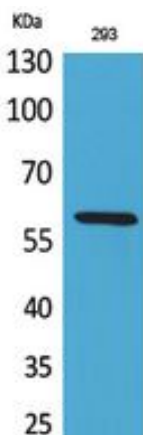
matters needing attention

Avoid repeated freezing and thawing!

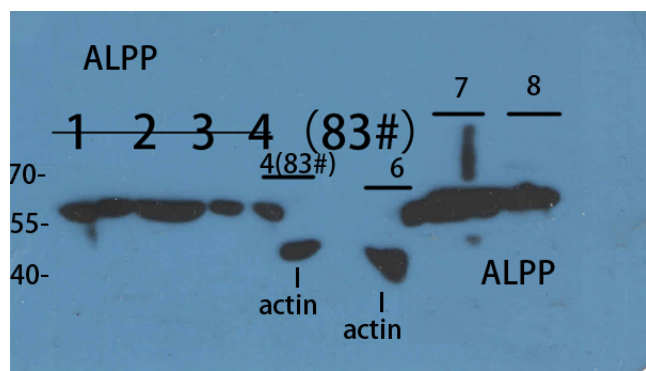
Usage suggestions

This product can be used in immunological reaction related experiments. For more information, please consult technical personnel.

Products Images



Western Blot analysis of 293 cells using ALPP/ALPPL2 Polyclonal Antibody. Antibody was diluted at 1:2000. Secondary antibody(catalog#:RS0002) was diluted at 1:20000



Western Blot analysis of customer's sample using ALPP/ALPPL2 Polyclonal Antibody. Antibody was diluted at 1:2000. Secondary antibody(catalog#:RS0002) was diluted at 1:20000

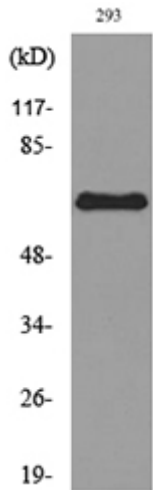
1 2 3 4 customer' s cell
6 293T
7 Hela
8 K562

Nanjing BYabs science technology Co.,Ltd

网址: www.njbybio.com

官方热线: 025-5229-8998

监督电话: 15950492658



Western blot analysis of lysate from 293 cells, using ALPP/ALPPL2 Antibody.