



Somatostatin (ABT232) Mouse mAb

Catalog No	BYab-15068
Isotype	IgG
Reactivity	Human;Mouse;Rat
Applications	IHC
Gene Name	SST
Protein Name	Growth hormone release inhibiting factor;Growth hormone release-inhibiting factor;Prepro somatostatin;SMS_HUMAN;SMST;Somatostatin 14;Somatostatin 28;Somatostatin-14;SST
Immunogen	Synthesized peptide derived from human Somatostatin
Specificity	The antibody can specifically recognize human Somatostatin protein.
Formulation	PBS, pH7.2, 0.03% Porcolin 300, containing stabilizing protein
Source	Monoclonal Mouse IgG2b, Kappa
Purification	The antibody was affinity-purified from mouse ascites by affinity-chromatography using specific immunogen.
Dilution	IHC-p 1:200-400,
Concentration	1 mg/ml
Purity	≥90%
Storage Stability	-20°C/1 year
Synonyms	Growth hormone release inhibiting factor;Growth hormone release-inhibiting factor;Prepro somatostatin;SMS_HUMAN;SMST;Somatostatin 14;Somatostatin 28;Somatostatin-14;SST
Observed Band	
Cell Pathway	Cytoplasmic
Tissue Specificity	Pancreas
Function	function:Somatostatin inhibits the release of somatotropin.,online information:Somatostatin entry,pharmaceutical:A synthetic analog known as octreotide or SMS 201-995 is available under the name Sandostatin (Novartis). It is used for the treatment of a variety of disorders including acromegaly and the symptomatic treatment of carcinoid tumors and vasoactive intestinal peptide tumors.,similarity:Belongs to the somatostatin family.,
Background	The hormone somatostatin has active 14 aa and 28 aa forms that are produced by alternate cleavage of the single preproprotein encoded by this gene.

Nanjing BYabscience technology Co.,Ltd



Somatostatin is expressed throughout the body and inhibits the release of numerous secondary hormones by binding to high-affinity G-protein-coupled somatostatin receptors. This hormone is an important regulator of the endocrine system through its interactions with pituitary growth hormone, thyroid stimulating hormone, and most hormones of the gastrointestinal tract. Somatostatin also affects rates of neurotransmission in the central nervous system and proliferation of both normal and tumorigenic cells. [provided by RefSeq, Jul 2008],

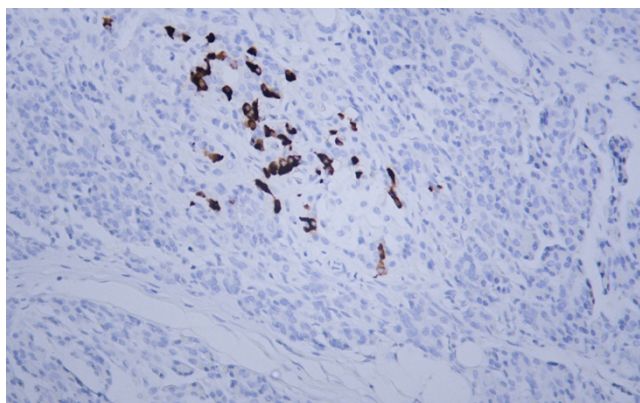
matters needing attention

Avoid repeated freezing and thawing!

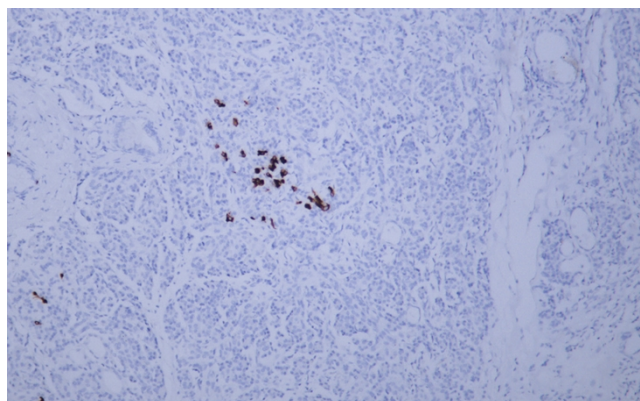
Usage suggestions

This product can be used in immunological reaction related experiments. For more information, please consult technical personnel.

Products Images



Human pancreas tissue was stained with Anti-Somatostatin (ABT232) Antibody



Human pancreas tissue was stained with Anti-Somatostatin (ABT232) Antibody