



Collagen Type III (ABT-CIII) mouse mAb

Catalog No	BYab-15318
Isotype	IgG
Reactivity	Human;Mouse
Applications	IHC;IF;
Gene Name	COL3A1
Protein Name	Collagen alpha-1(III) chain
Immunogen	Synthesized peptide derived from human Collagen Type III
Specificity	This antibody detects endogenous levels of human Collagen Type III. Heat-induced epitope retrieval (HIER) Citrate buffer of pH6.0/Pepsin was highly recommended as antigen repair method in paraffin se
Formulation	Liquid in PBS containing 50% glycerol, 0.5% BSA and 0.02% sodium azide.
Source	Mouse, Monoclonal/IgG2a, Kappa
Purification	The antibody was affinity-purified from mouse ascites by affinity-chromatography using specific immunogen.
Dilution	IF 1:200 IHC 1:50-300
Concentration	1 mg/ml
Purity	≥90%
Storage Stability	-20°C/1 year
Synonyms	
Observed Band	
Cell Pathway	Secreted, extracellular space, extracellular matrix .
Tissue Specificity	Colon carcinoma,Liver,Placenta,Skin fibroblast,
Function	disease:Defects in COL3A1 are a cause of Ehlers-Danlos syndrome type 3 (EDS3) [MIM:130020]; also known as benign hypermobility syndrome. EDS is a connective tissue disorder characterized by hyperextensible skin, atrophic cutaneous scars due to tissue fragility and joint hyperlaxity. EDS3 is a form of Ehlers-Danlos syndrome characterized by marked joint hyperextensibility without skeletal deformity.,disease:Defects in COL3A1 are a cause of susceptibility to aortic aneurysm abdominal (AAA) [MIM:100070]. AAA is a common multifactorial disorder characterized by permanent dilation of the abdominal aorta, usually due to degenerative changes in the aortic wall. Histologically, AAA is characterized by signs of chronic inflammation, destructive remodeling of the extracellular matrix, and depletion of vascular smooth muscle cells.,disease:Defects in COL3A1 are

Nanjing BYabs science technology Co.,Ltd



the cause of Ehlers-Danlos syndrome t

Background	collagen type III alpha 1 chain(COL3A1) Homo sapiens This gene encodes the pro-alpha1 chains of type III collagen, a fibrillar collagen that is found in extensible connective tissues such as skin, lung, uterus, intestine and the vascular system, frequently in association with type I collagen. Mutations in this gene are associated with Ehlers-Danlos syndrome types IV, and with aortic and arterial aneurysms. Two transcripts, resulting from the use of alternate polyadenylation signals, have been identified for this gene. [provided by R. Dalgleish, Feb 2008],
matters needing attention	Avoid repeated freezing and thawing!
Usage suggestions	This product can be used in immunological reaction related experiments. For more information, please consult technical personnel.

Nanjing BYabscience technology Co.,Ltd

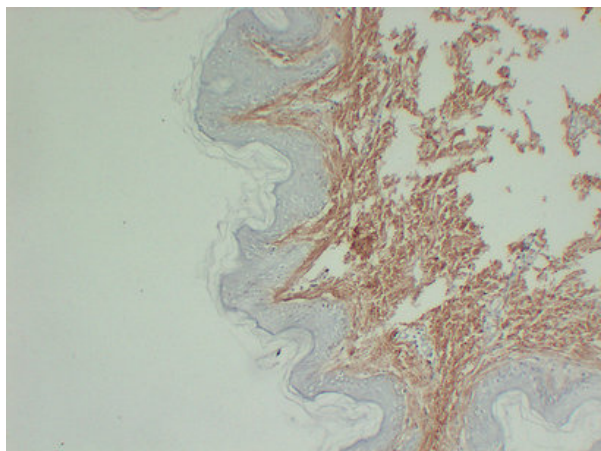
网址: www.njbybio.com

官方热线: 025-5229-8998

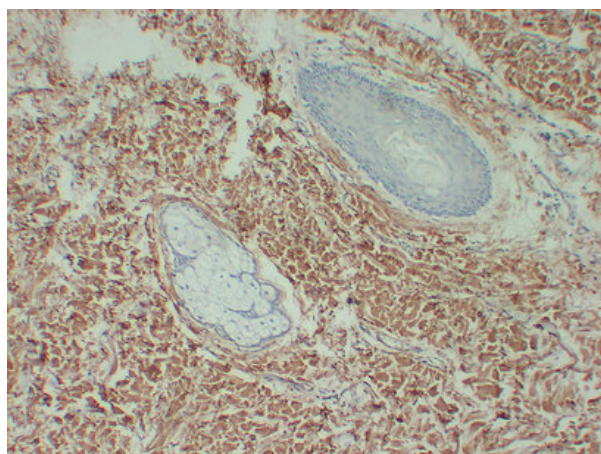
监督电话: 15950492658



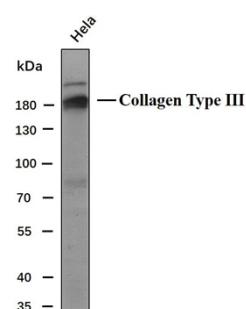
Products Images



Immunohistochemical analysis of paraffin-embedded Skin. 1, Antibody was diluted at 1:200(4° overnight). 2, Citric acid ,pH6.0 was used for antigen retrieval. 3,Secondary antibody was diluted at 1:200(room temperature, 30min).



Immunohistochemical analysis of paraffin-embedded Skin. 1, Antibody was diluted at 1:200(4° overnight). 2, Citric acid ,pH6.0 was used for antigen retrieval. 3,Secondary antibody was diluted at 1:200(room temperature, 30min).



Whole cell lysates of HeLa(30ug) were separated by 8% SDS-PAGE, and the membrane was blotted with Collagen Type III antibody. The HRP-conjugated anti-Mouse IgG antibody was used to detect the antibody.

Predicted band size: 138kDa
Observed band size: 180kDa

Western blot analysis of Collagen Type IIIAntibody at 1:1000 dilution.