



# Actin, smooth muscle (SMA) (ABT-SMA) mouse mAb

Catalog No	BYab-15344
Isotype	IgG
Reactivity	Human;Mouse;Rat
Applications	IHC;WB;IF
Gene Name	Actin, smooth muscle
Protein Name	Actin, smooth muscle
Immunogen	Synthesized peptide derived from human Actin, smooth muscle (SMA)
Specificity	This antibody detects endogenous levels of human Actin, smooth muscle (SMA). Heat-induced epitope retrieval (HIER) TRIS-EDTA of pH8.0 was highly recommended as antigen repair method in paraffin section
Formulation	Liquid in PBS containing 50% glycerol, 0.5% BSA and 0.02% sodium azide.
Source	Mouse, Monoclonal/IgG2a, Kappa
Purification	The antibody was affinity-purified from mouse ascites by affinity-chromatography using specific immunogen.
Dilution	IHC-p 1:300-500. IF 1:50-200 WB 1:200-1000
Concentration	1 mg/ml
Purity	≥90%
Storage Stability	-20°C/1 year
Synonyms	
Observed Band	
Cell Pathway	Cytoplasm, cytoskeleton.
Tissue Specificity	Pituitary,Uterus,
Function	disease:Defects in ACTA2 are the cause of aortic aneurysm familial thoracic type 6 (AAT6) [MIM:611788]. AATs are characterized by permanent dilation of the thoracic aorta usually due to degenerative changes in the aortic wall. They are primarily associated with a characteristic histologic appearance known as 'medial necrosis' or 'Erdheim cystic medial necrosis' in which there is degeneration and fragmentation of elastic fibers, loss of smooth muscle cells, and an accumulation of basophilic ground substance.,function:Actins are highly conserved proteins that are involved in various types of cell motility and are ubiquitously expressed in all eukaryotic cells.,miscellaneous:In vertebrates 3 main groups of actin isoforms, alpha, beta and gamma have been identified. The alpha actins are found in muscle tissues and are a major constituent of the contractile apparatus. The beta

Nanjing BYabscience technology Co.,Ltd



and gamma actin

**Background**

The protein encoded by this gene belongs to the actin family of proteins, which are highly conserved proteins that play a role in cell motility, structure and integrity. Alpha, beta and gamma actin isoforms have been identified, with alpha actins being a major constituent of the contractile apparatus, while beta and gamma actins are involved in the regulation of cell motility. This actin is an alpha actin that is found in skeletal muscle. Defects in this gene cause aortic aneurysm familial thoracic type 6. Multiple alternatively spliced variants, encoding the same protein, have been identified. [provided by RefSeq, Nov 2008],

**matters needing attention**

Avoid repeated freezing and thawing!

**Usage suggestions**

This product can be used in immunological reaction related experiments. For more information, please consult technical personnel.

Nanjing BYabscience technology Co.,Ltd

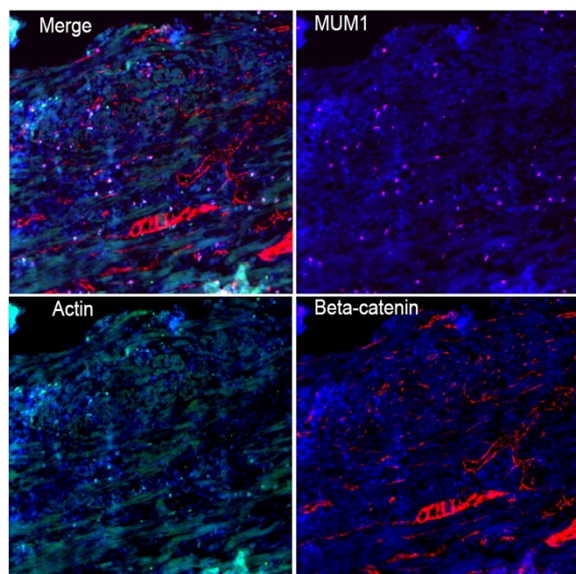
网址: [www.njbybio.com](http://www.njbybio.com)

官方热线: 025-5229-8998

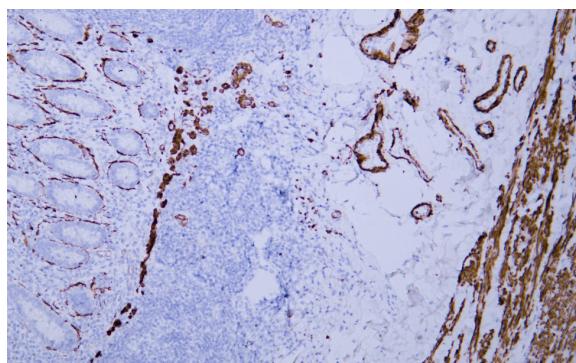
监督电话: 15950492658



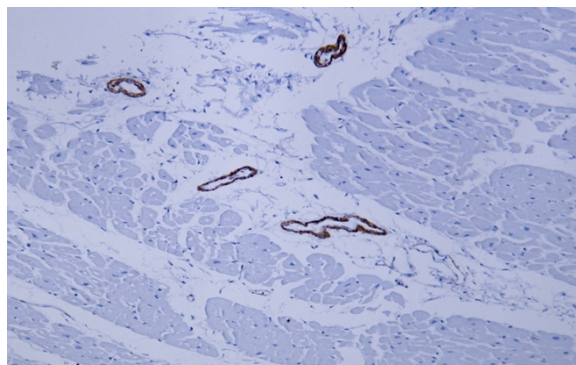
## Products Images



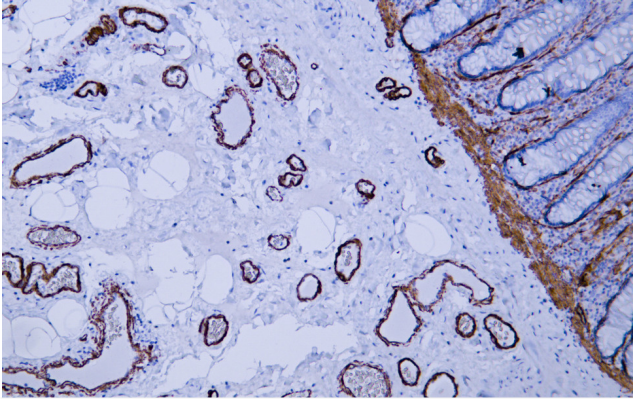
Fluorescence multiplex immunohistochemical analysis of normal human appendix tissue (formalin-fixed paraffin-embedded section). The section was incubated in 3 rounds of staining; in the order of Actin .( Catalog no:YM6566 1/200 dilution), Beta-catenin .(Catalog no: YM6675 1/200 dilution), MUM1. (Catalog no:YM6762 1/200 dilution), each using a separate fluorescent tyramide signal amplification system : Treble-Fluorescence immunohistochemical mouse/rabbit kit Catalog NO: RS0035 (pH9.0)



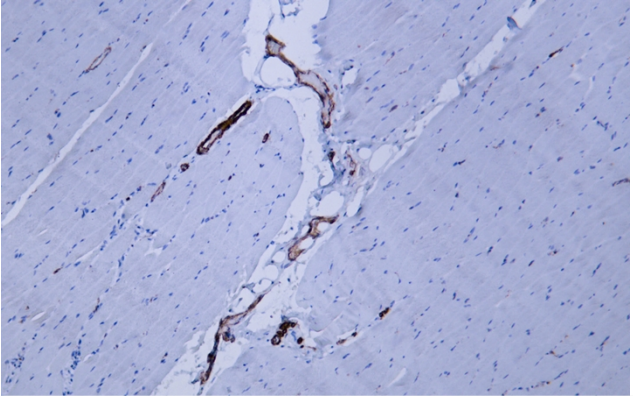
Human appendix tissue was stained with anti-SMA(ABT-SMA) antibody. Secondary Antibody was Goat anti Rabbit/Mouse polymer HRP, Ready to Use(RS0011) at 37° 45min.



Human cardiac muscle tissue was stained with anti-SMA(ABT-SMA) antibody. Secondary Antibody was Goat anti Rabbit/Mouse polymer HRP, Ready to Use(RS0011) at 37° 45min.



Human colon tissue was stained with anti-SMA(ABT-SMA) antibody. Secondary Antibody was Goat anti Rabbit/Mouse polymer HRP, Ready to Use(RS0011) at 37° 45min.



Human leiomyoma tissue was stained with anti-SMA(ABT-SMA) antibody. Secondary Antibody was Goat anti Rabbit/Mouse polymer HRP, Ready to Use(RS0011) at 37° 45min.