



# Claudin 4 (ABT-CLD4) mouse mAb

<b>Catalog No</b>	BYab-15356
<b>Isotype</b>	IgG
<b>Reactivity</b>	Human
<b>Applications</b>	IHC;IF
<b>Gene Name</b>	CLDN4 CPER CPETR1 WBSCR8
<b>Protein Name</b>	Claudin-4 (Clostridium perfringens enterotoxin receptor) (CPE-R) (CPE-receptor) (Williams-Beuren syndrome chromosomal region 8 protein)
<b>Immunogen</b>	Synthesized peptide derived from human Claudin 4
<b>Specificity</b>	This antibody detects endogenous levels of human Claudin 4. Heat-induced epitope retrieval (HIER) TRIS-EDTA of pH8.0 was highly recommended as antigen repair method in paraffin section
<b>Formulation</b>	Liquid in PBS containing 50% glycerol, 0.5% BSA and 0.02% sodium azide.
<b>Source</b>	Mouse, Monoclonal/IgG2b, Kappa
<b>Purification</b>	The antibody was affinity-purified from mouse ascites by affinity-chromatography using specific immunogen.
<b>Dilution</b>	IHC-p 1:100-500, WB 1:500-2000. IF 1:50-200
<b>Concentration</b>	1 mg/ml
<b>Purity</b>	≥90%
<b>Storage Stability</b>	-20°C/1 year
<b>Synonyms</b>	
<b>Observed Band</b>	
<b>Cell Pathway</b>	Cell junction, tight junction . Cell membrane ; Multi-pass membrane protein . CLDN4 is required for tight junction localization in the kidney. .
<b>Tissue Specificity</b>	Colon,Fetal brain,Trachea,
<b>Function</b>	disease:Haploinsufficiency of CLDN4 may be the cause of certain cardiovascular and musculo-skeletal abnormalities observed in Williams-Beuren syndrome (WBS), a rare developmental disorder. It is a contiguous gene deletion syndrome involving genes from chromosome band 7q11.23.,function:Plays a major role in tight junction-specific obliteration of the intercellular space.,similarity:Belongs to the claudin family.,subunit:Directly interacts with TJP1/ZO-1, TJP2/ZO-2 and TJP3/ZO-3.,
<b>Background</b>	The protein encoded by this intronless gene belongs to the claudin family. Claudins are integral membrane proteins that are components of the epithelial cell tight junctions, which regulate movement of solutes and ions through the

**Nanjing BYabscience technology Co.,Ltd**



paracellular space. This protein is a high-affinity receptor for Clostridium perfringens enterotoxin (CPE) and may play a role in internal organ development and function during pre- and postnatal life. This gene is deleted in Williams-Beuren syndrome, a neurodevelopmental disorder affecting multiple systems. [provided by RefSeq, Sep 2013],

**matters needing attention**

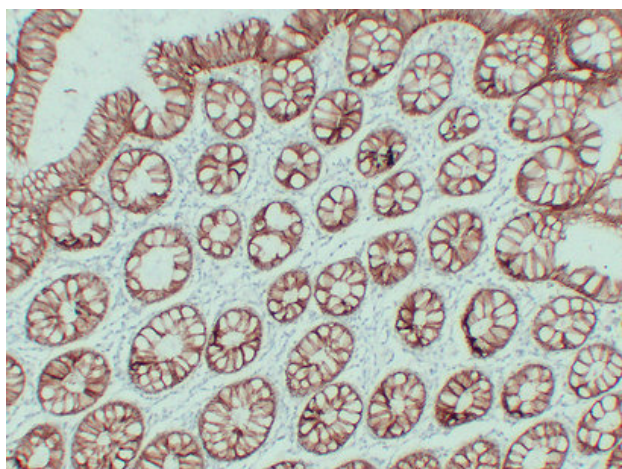
Avoid repeated freezing and thawing!

**Usage suggestions**

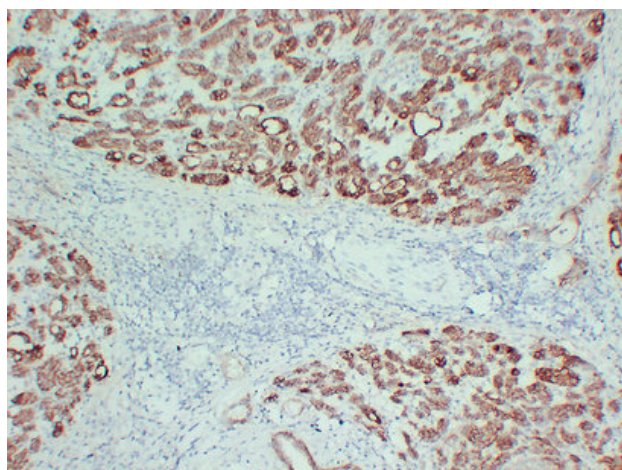
This product can be used in immunological reaction related experiments. For more information, please consult technical personnel.



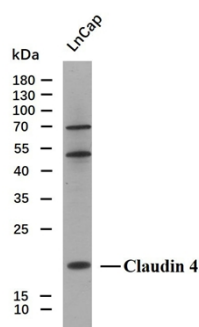
## Products Images



Immunohistochemical analysis of paraffin-embedded Colon. 1, Antibody was diluted at 1:200(4° overnight). 2, TRIS-EDTA of pH8.0 was used for antigen retrieval. 3, Secondary antibody was diluted at 1:200(room temperature, 30min).



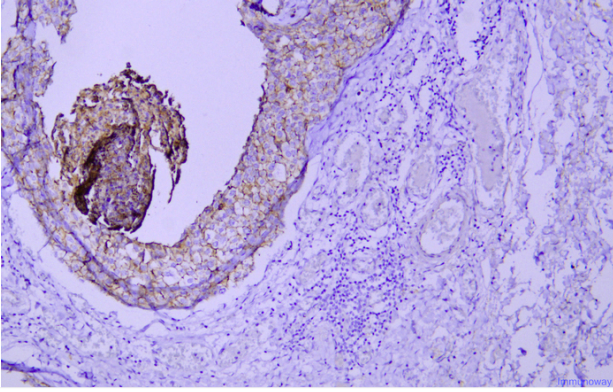
Immunohistochemical analysis of paraffin-embedded Pancreatic carcinoma. 1, Antibody was diluted at 1:200(4° overnight). 2, TRIS-EDTA of pH8.0 was used for antigen retrieval. 3, Secondary antibody was diluted at 1:200(room temperature, 30min).



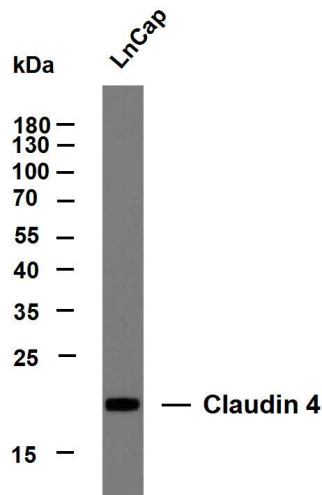
Whole cell lysates of LnCap(30ug) were separated by 12% SDS-PAGE, and the membrane was blotted with Claudin 4 antibody. The HRP-conjugated anti-Mouse IgG antibody was used to detect the antibody.

Predicted band size: 22kDa

Western blot analysis of Claudin 4Antibody at 1:1000 dilution.



Immunohistochemical analysis of paraffin-embedded human mammary cancer Antibody was diluted at 1:200(4° overnight).



Whole cell lysates were separated by 12% SDS-PAGE, and the membrane was blotted with anti-Claudin 4 (ABT-CLD4) antibody. The HRP-conjugated Goat anti-Mouse IgG(H + L) antibody was used to detect the antibody. Lane 1: LnCap Predicted band size: 22kDa Observed band size: 22kDa